

[www.wittur.com](http://www.wittur.com)



# WITTUR MODERNIZATION SOLUTIONS

UPGRADE ELEVATORS WITH THE LATEST TECHNOLOGY

North America - A17.1/B44 Code Compliant

For more information and pricing please contact Wittur USA at: [info.us@wittur.com](mailto:info.us@wittur.com)

# Linear Door Operators

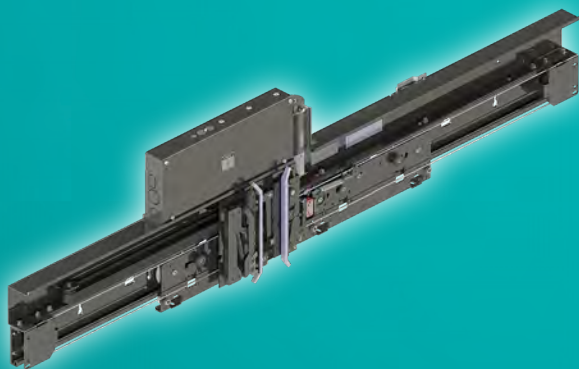
The **SGV modernization kit** is available for most OEM's; MOD kits include adjustable car door operator brackets, door panel adapters to interface with existing door panels, and the clutch with integrated car door interlock. GAL, MAC, DOVER, WESTINGHOUSE, OTIS kits are available for interfacing to existing landing door locks, plus more than 70 special engineered job specific car door locks. **SGV door operators** combine robust design and high performance with eco-efficient drives.

**SGV SUPRA linear door operators** achieve their high performance, high speed operation through a powerful permanent magnet synchronous motor.

**SGV operators** share the same mechanical components as the corresponding landing doors. Discrete and serial (CAN bus) communication interfaces available.

## Labor saving construction

- Easy access and control of operator from the entrance or from the cab roof.
- Low space requirement leaves rooftop free of equipment
- Simple maintenance with few moving parts
- Dependable electronics with a multitude of options
- Heavy duty clutch CSA certified car door interlock eliminates the need for additional restrictors
- Large PU Coated Ø 3 3/4" (94mm) hanger Rollers for reliable and silent operation



*The SGV modernization packages are equipped with customized interface components for an easy and quick installation. No on-site adaptations required! Made in North America.*

SGV is compliant with ASME A17.1/B44 and certified by CSA NRTL/C, including certified car door interlock. SGV landing doors are also available in fire resistant execution certified according to UL 10B 1-1/2H, door heights up to 120".

### Door Drive Parameters SUPRA

Motor characteristics	3 phase Permanent Magnet Synchron Motor
Drive	V3F-Converter (vector control)
Average Power Consumption	170 W
Max Momentary Power Consumption	900 W
Power Supply	Univ. 115-230 V ±20% 50/60 Hz
Max. Speed	3.3 ft/s (1.0 m/s)
Max. Panel Weight by Railing	SGV2 = 275 lb (125 kg)
Protection Class	IP20
Storage Temperature	-45 ... +70 °C
Operating Ambient Temperature	-20 ... +50 °C
Humidity Range	98% max. 40 °C
Regulations and Codes	EN 81, ASME A17.5, CAN/CSA-B441
Electromagnetic compatibility	Immunity and emission protection acc. EN 12015/16
Max. Movable Masses (car & landing door panels)	1320 lbs / 600 kg
Noise Level (door operator)	Average 50 dB, max. 55 dB
Estimated Lifetime	More than 5 million cycles

Door Type	Illustration	CO (1 inch step) <sup>1</sup>	
		MIN.	MAX.
1S right <sup>2</sup>		32"	48"
1S left <sup>2</sup>			
2C left <sup>2</sup>		36"	60"
2C right <sup>2</sup>			
2T right <sup>2</sup>		30"	72"
2T left <sup>2</sup>			
4C left <sup>2</sup>		48"	118"
4C right <sup>2</sup>			

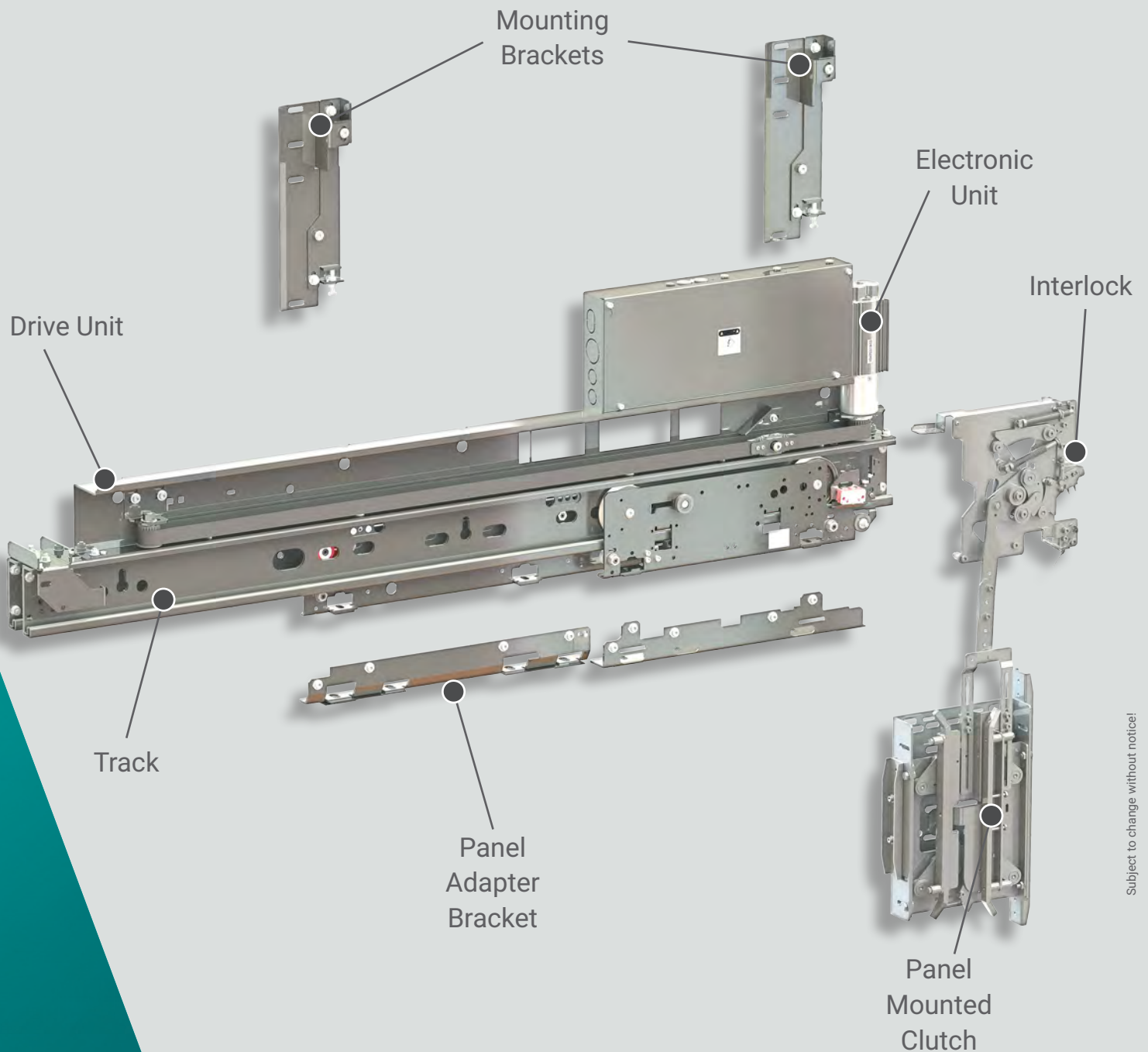
<sup>1</sup> Contact Wittur representative for non-stock sizes.

<sup>2</sup> Opening to the left / right - seen from the hall.



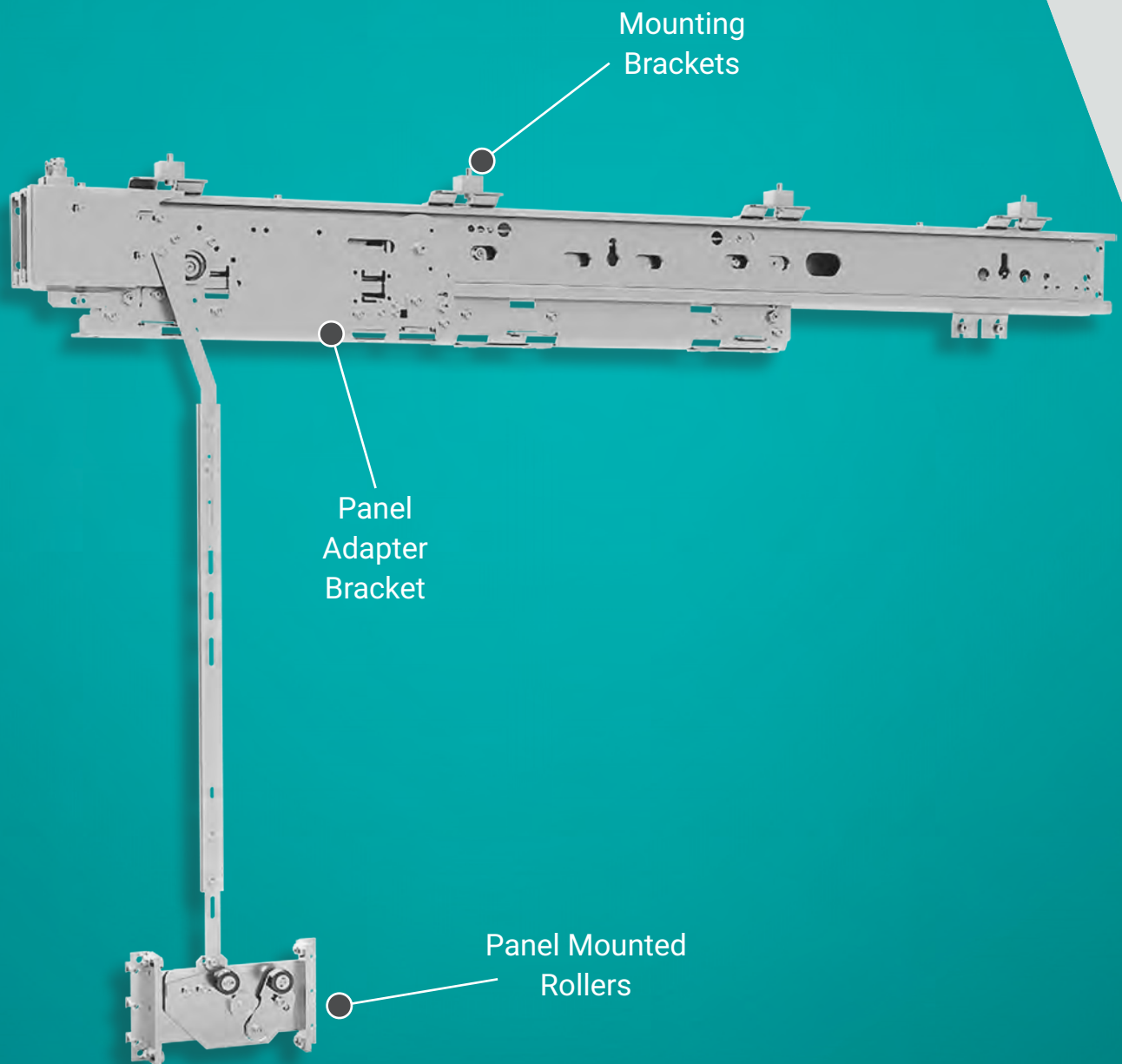
# SGV2 Modernization Package

## Cab Side



# SGV2 Modernization Package

Landing Side

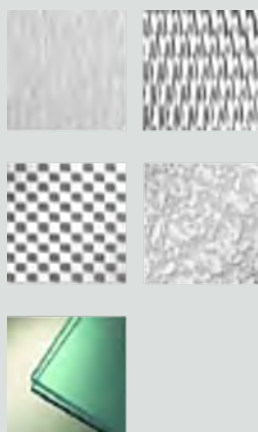
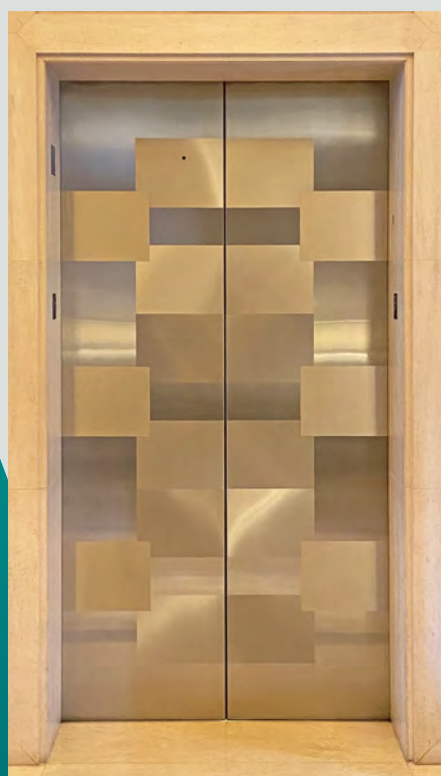


# Landing Tracks, Hangers Sills and Door Panels

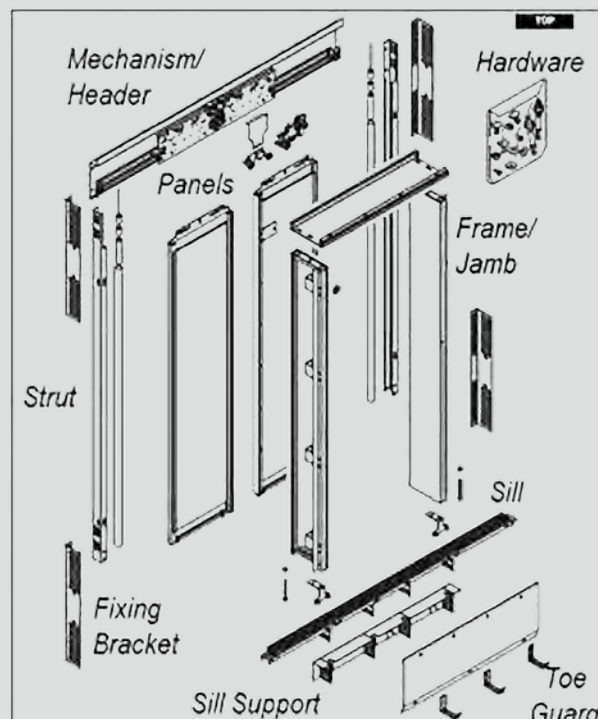
Wittur's Tracks and Hangers provide smooth and quiet door operation, improving reliability with a robust design, proven and easy installable components.

## Aesthetic requirements

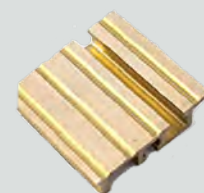
- Our doors and entrances are installed in highly prestigious buildings all over North America. It's not only a matter of performances, but also of appearance
- Various finishes such as brushed or mirrored metals, etched patterns embossing or almost any material our customer desires can be applied or laminated to doors and frames in order to create a special design.



Numerous entrance finish options available.



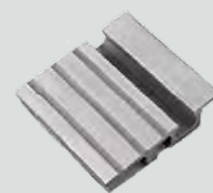
Aluminium  
(Standard)



Bronze  
(Optional)



Nickel Silver  
(Optional)



Stainless Steel  
(Optional)

# Safety Devices & Roller Guides

## Precision Safety Devices

Research for innovative solutions and rigid control of product quality are key features of Wittur Safety products.

The product range includes uni-directional, instantaneous and progressive safety gears.

Devices for ascending car overspeed protection are also available.

Wittur overspeed governors can cover a broad range of speeds and can be applied both to machine room less and traditional installations.

Our overspeed governors can be engaged at any point along perimeter of pulley and assure high lifetime due to limited pulley wear.

CSGB02/03  
low-mid rise



WSGB10  
high rise



OL35(E)-NA  
low-mid rise



OL100-NA  
high rise



*Wittur produces numerous safeties for low-, mid-and high-rise applications .*

*Wittur' provides quality Overspeed Governors and Tension weights for low, mid- and high-rise applications.*

## WRG Roller Guide Shoes

- Can be placed on both cars and counterweights frames, for medium and high-speed elevators up to 2,000 FPM (10,0 m/s).
- Roller Sizes from 3" to 12" (80-300mm).
- All rollers are separately spring-loaded ensuring maximum ride comfort.
- Uniform design concept - optimized for its field of application.
- Suitable for T-Profile guide rails only.
- Experienced technology for an absolute smooth ride.
- Roller guides are pre-assembled and adjusted for installation.
- Fitting kit for the exact installation of the roller guides is included.



*WRG Roller Guides applied to the four corners of the car and counterweight frames to minimize vibration and create a smooth ride along the guide rails and limits overall travel to prevent unintended safety actuation.*

*Wittur has various sizes for up to 2,000 FPM.*



# Gearless Machines



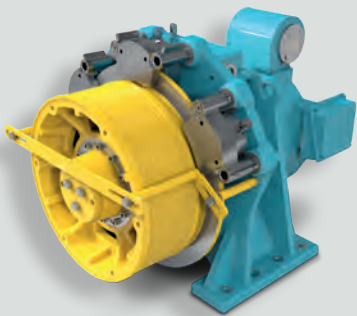
## German Engineering and Precision

WITTUR Electric Drives GmbH in Dresden offers a comprehensive range of quality gearless machines, now available for the North American market.

These compact gearless lift machines are distinguished by their high efficiency, extremely low noise and excellent smooth running. The Machines are UL/CSA Certified and compliant with ASME A17.1.

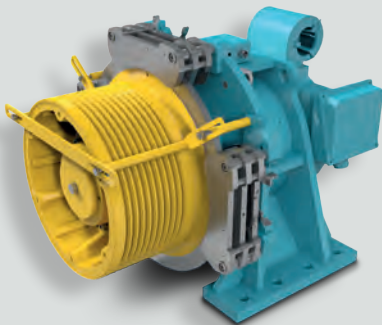
With machines having rope tension in all directions and our bedplate designs accomodating overhead, basement, or side-mount applications, we provide solutions for numerous configurations.

The machines are versatile with various sheave sizes and groove styles, 1:1 or 2:1 roping with single or double wrap configurations. The machines are available for low-rise to high-rise applications.



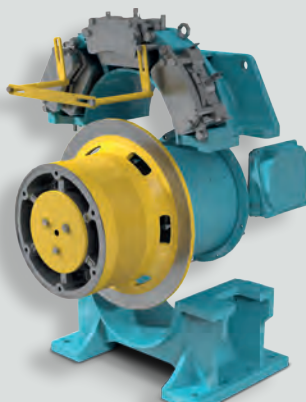
### WSG-21

- Four types of traction sheaves (from 20.87" up to 27")
- Loads from 3,300 lbs. up to 6,600 lbs.
- Sheave shaft load 31,460 lbs.
- Speed up to 2,000 fpm.
- Variable number of brakes and of brake torque.
- Single and double wrap for 1/2" and 5/8" ropes.
- Customized bed plates available.



### WSG-25

- Three types of traction sheaves (from 20.87 up to 27")
- Loads from 4400 lbs. up to 8800 lbs.
- Sheave shaft load 45,000 lbs.
- Speed up to 2000 fpm.
- Variable number of brakes and brake torque.
- Single and double wrap for 1/2" and 5/8" ropes.
- Customized bed plates available.



### WGG-29

- Patented Split-Frame for easy machine room access.
- Loads from 5500 lbs. to 11000 lbs.
- Sheave shaft load 67,420 lbs.
- Speed up to 2000 fpm.
- Variable number of brakes and brake torque.
- Single and double wrap for 1/2" and 5/8' ropes.
- Customized bed plates available.



WITTUR

**YOUR GLOBAL PARTNER** FOR COMPONENTS,  
MODULES AND SYSTEMS IN THE ELEVATOR INDUSTRY



Ed. 1 Rev. 2 August 2023  
Subject to change without notice!



**ADVANCING** THE ELEVATOR INDUSTRY®

Contact a Wittur Sales Professional and permit us to assist you.

Wittur USA Inc., 7852 Bavaria Road, Twinsburg, OH 44087 USA, Phone +1 (216) 524 0100, [info.us@wittur.com](mailto:info.us@wittur.com)

WITTUR.COM

