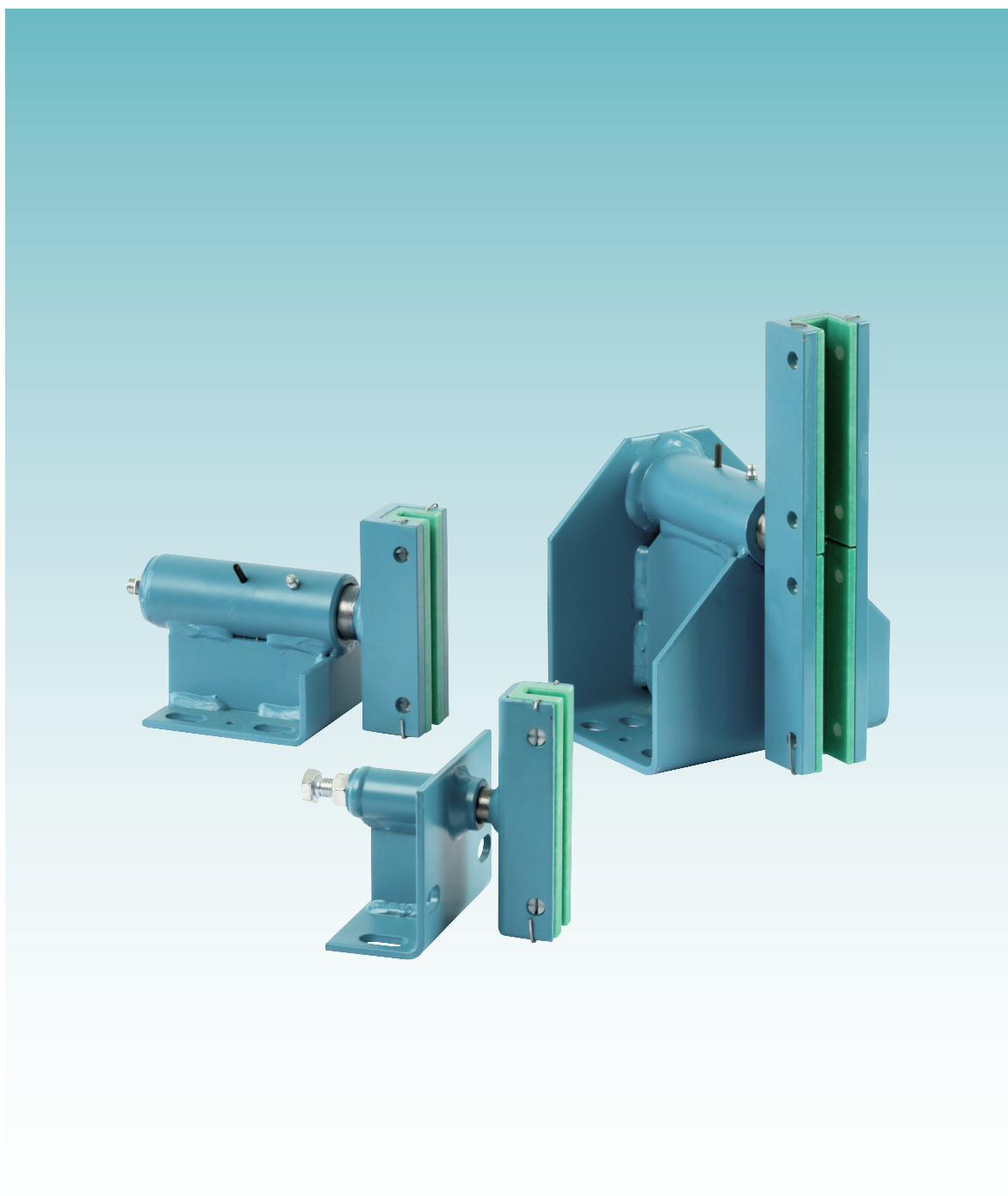


SLIDING GUIDE SHOES

SLG



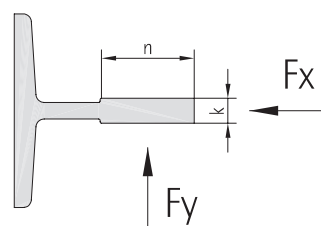
EXCELLENCE IN SOLUTIONS

SLIDING GUIDE SHOES

SLG

Type	k [mm]	V _{car} [m/s]	V _{CWT} [m/s]	F _X / F _Y [N]
SLG1 / SLG1A	8, 9, 10, 12, 14, 15, 16	2,0	2,5	1.000
SLG1S	9, 16, 19	2,0	2,5	2.000
SLG2 / SLG2A	8, 9, 10, 12, 14, 15, 16, 19	2,0	2,5	2.000
SLG11H	16, 19	2,0	---	3.900
SLG3 / SLG3A	16, 19, 29, 32	2,0	---	3.500
SLG11	8, 9, 10, 12, 14, 15, 16, 19	2,0	---	2.000
SLG4 / SLG4A	19, 29, 32	2,0	---	20.000
SLG6 / SLG6A	8, 9, 12, 16	1,6	1,6	650
SLG7	5, 9, 16	1,6	1,6	320

	SLG _	SLG _ A
Hardness of sliding inlay	Shore D65	Shore D65
Resistance to wear	☺	☺
Sliding characteristics	☺	☺
Absorbing characteristics	☺	☹



k Thickness of guide rail head
 v Rated Speed
 F_x/F_y Max. Load during travel

FEATURES

- Wide range covering requirements of new elevator and modernization business
- Possibility to choose hardness of sliding inlays according to elevator specification
- Types with turnable support for sliding inlay ensure optimum ride comfort and reduced wear