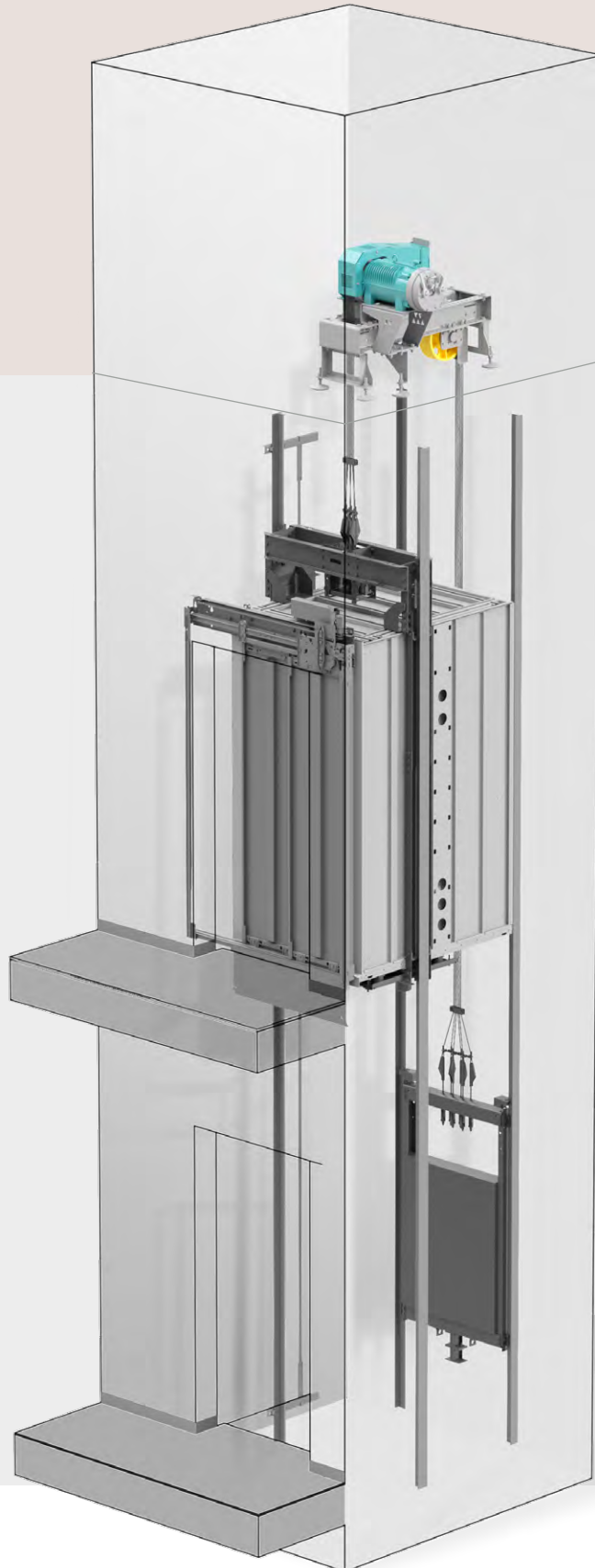


MECHANICAL PACKAGES

SIMPLIFYING THE
INSTALLATION AND
MAINTENANCE FOR
THE LOW RISE
MARKET SEGMENT





Wittur Mechanical Packages

Wittur provides full component range for easy solution on low rise installation and modernization market segment.

Servo Gearless Machines

- WSG-TR
- WSG-SF
- WSG-MF

Bedplates

- WBP-TR
- WBP-SF/MF
- Diverting Pulleys

Safety Gears

- ESG
- CSGB01
- BSG-25P

Guide Shoes

- Sliding
- Roller

Ropes & Terminal Ends

- Steel Ropes
- PU-Coated Ropes

OSG-Systems

- OL20
- OL35
- EOS

Tension Devices

- STW
- TWS
- CTW

Car

VESTA
VESTA FIT

Car Sling

WCF06
WCF06E

CWT frame

WCW06



VESTA Car



VESTA is the brand new Wittur lift car. Developed for modernization applications, its design allows maximization of the car size in narrow spaces. It also ranges from rated loads 320 kg to 1.600 kg⁽¹⁾. The benefits and features include:

The Designer

- Compatible with Wittur and third party door operators
- Compatible with Wittur and third party slings
- Total adaptation to COP needs
- Flexible design
- 1mm car width and depth adjustment

The Installer

- Car built from the inside
- Patent pending wall assembly
- Only five tools required to build the car
- Short installation time
- Low headroom / Low pit solutions

The User

- Online car designer visualizer
- Wide range of material finishes
- Architectural samples available
- Multiple lighting options
- Multiple interior accessory choices



	Rated Speed [m/s]	Rated Load [Kg]	CIW [mm]	CID [mm]	CIH [mm]	DBG [mm]	Max. Car Area [m ²]	Wall finishes	Floor finishes
VESTA	up to 1,6	320 - 1.000 ⁽¹⁾	600 - 1.400	600 - 2.400	2050 - 2.500	Depends on the car sling	3,36	<ul style="list-style-type: none"> Stainless steel Painted Steel Skinplate Panoramic Glass Plastic Laminate Back-Painted Glass 	<ul style="list-style-type: none"> PVC Linoleum Composite Stone Metal Vinyl
VESTA FIT execution	up to 1,6	320 - 630	720 - 1.400	700 - 1.500	2050 - 2.500	800 - 1.480 (Reduced DBG)	2,10	<ul style="list-style-type: none"> Stainless steel Painted Steel Skinplate Panoramic Glass Plastic Laminate Back-Painted Glass 	<ul style="list-style-type: none"> PVC Linoleum Composite Stone Metal Vinyl

VESTA-WITTUR SLINGS COMPATIBILITY

WCF 06	WCF 10-16	WCF 06	WCF 10-16	AHT 6-8	AHT 11-13	AHT 6 CTR
✓	✓	✓	✓	✓	✓	✓

VESTA-WITTUR DOORS COMPATIBILITY

Hydra/Hydra Plus	Hydra 3000	Fineline	Augusta Evo	Pegasus	C-MOD	Eco Bus
02/C, 12/L-R, 42/C, 44/C, 35/L-R	02/C, 12/L-R, 35/L-R, 44/C	02/C, 12/L-R, 4/S, 4/ASL - R	02/C, 12/L-R	12/L-R, 42/C	K2Z, K4Z, K2R/L	-
✓	✓	✓	✓	✓	✓	✓



(1) Ask about VESTA extension plan.



WCF Car Slings



WCW CWT Frames

- Modular structure
- Full isolation
- Easy installation
- Wittur compatibility
- EN81-21 Low Pit & Headroom
- Flexible design
- Maximum adaptation
- Compact delivery



Highlighted data represents newly incoming availability

	EN81-21	Max Rated Speed [m/s]	Max. Travel Height [m]	Max. Rated Load [kg]	Max. Suspended Load [kg]	DBG Min/Max [mm]			Suspension	Rope Ø [mm]	Guide Rail Blade [mm]
WCF06 [Slings]	×	1,75	60	700	1.600	800/1.510	✓	✓	1:1 Top 2:1 Top 2:1 Bottom	6 ÷ 10 6 ÷ 8,1 6 ÷ 8,1	8 ÷ 16
WCF06E [Slings]	✓	1,6	35	700	1.700	680/1.600	✓	✓	1:1 Top 2:1 Top	6 ÷ 10 6 ÷ 8,1	9 ÷ 16

	EN81-21	Max Rated Speed [m/s]	Max. Travel Height [m]	Max. Frame Height [mm]	Max. Suspended Load [kg]	DBG Min/Max [mm]			Suspension	Rope Ø [mm]	Guide Rail Blade [mm]
WCW06 [Counterweight Frames]	✓	1,75	70	3.900	1.350	470/1.020	✓	✓	1:1 Top 2:1 Top	6 ÷ 10	5 ÷ 16

	Cars		CWT	Lift Machines			Bed Plates		Guide Shoes	
	VESTA	VESTA "Fit"	WCW06	WSG-TR	WSG-SF	WSG-MF	WBP-TR	WBP-SF WBP-MF	SLG	WRG
WCF06	✓	✓	✓	✓	✓	✓	✓	✓	✓	✓
WCF06E	✓	✓	✓	✓	✓	✓	✓	✓	✓	×

	Safety Gears					Overspeed Governors			Tension Devices		
	CSGB-01	BSG-25P	ESG-17BS	ESG-25BS	ESG-25U	OL20	OL35	EOS	STW	CTW	TWS
WCF06	✓	✓	×	×	×	✓	✓	✓	✓	✓	✓
WCF06E	×	×	✓	×	✓	×	×	×	×	×	×

Steel Ropes PU Coated Ropes



Lift Machines

Solutions for Steel & PU Coated ropes



- Rope tension in all directions
- High-efficiency permanent magnets



WSG-TR



WSG-SF



WSG-MF

	WSG-TR	WSG-SF	WSG-MF
Rope ø (mm)	6,5 / 8,1	6 / 6,5 / 8 / 10	6 / 6,5 / 8 / 10
Traction Sheave ø (mm)	120	160 / 210 / 240 320 / 400 / 480	240 / 270 / 320 400 / 480 / 520
Max Load on Shaft (kN)	35	26	45
Max Weight (kg)	171	167	368
Suspension	1:1 2:1	1:1 2:1	1:1 2:1
Max Rated Speed (m/s)	2,0	1,6	2,5 2,0
Max Rated Load (kg)	550	1.150	675 1.500
N. of passengers	7	15	9 20

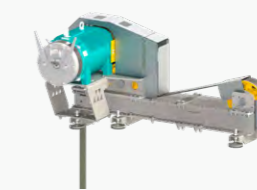


Standardized Bed Plates

- Light compact delivery
- Maximum adaptation



WBP-TR



WBP-SF / WBP-MF

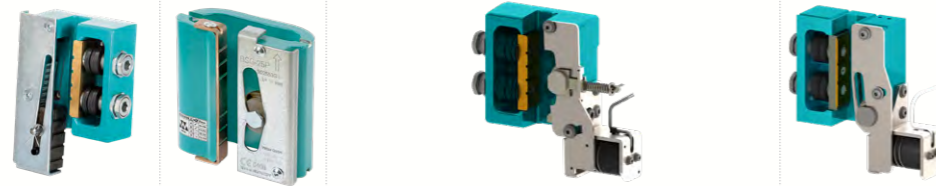
	WSG-TR	WSG-SF / WSG-MF			
Machine Type	WSG-TR	WSG-SF / WSG-MF			
Adjustable each [mm]	25	40			
Bed Plate Frame Type	Standard	High	Flat	Flat Extensible	
Suspension	1:1 2:1	1:1 / 2:1	1:1 / 2:1	1:1	2:1
Rope Downfall [mm]	380 ÷ 880	500 ÷ 1.000	480 ÷ 1.005	280 ÷ 1.325	280 ÷ 1.765
Weight [Kg]	171	138 / 195	132 / 232	172 / 262	195 / 284
Traction Rope	PU Coated	Steel			
Rope ø [mm]	6,5 / 8,1	6 / 6,5 / 8 / 10			
Diverging Pulley ø [mm]	120	240 / 330 / 410			

Steel Ropes PU Coated Ropes



Safety Gears

- Low release force
- All safety functions
- Lightweight compact design
- Very high safety factor
- Innovative progressive braking
- Wittur compatibility



	CSGB-01	BSG-25P	ESG-17BS		ESG-25BS	ESG-25U
			Progressive			

Direction	Uni-directional	Bi-directional	Bi-directional		Bi-directional	Uni-directional
Guide Rail Type	Machined Cold Drawn	Machined Cold Drawn	Cold Drawn	Machined	Machined	Machined
Guide Rail Treatment	Dry / Oiled	Dry / Oiled	Dry / Oiled	Dry / Oiled	Dry / Oiled	Dry / Oiled
Guide Rail Blade [mm]	9 ÷ 16	8 ÷ 16	9 ÷ 16	9 ÷ 16	9 ÷ 16	9 ÷ 16
Minimal FMax [Kg]	575	584	53 / 530	530	1.000	500 / 500
Maximal FMax [Kg]	2.700	2.550	1.680 / 1.550	1.680	2.500	2.500 / 2.100
Max Rated Speed [m/s]	2	2	1,4	1,4 / 2	2	2,25
Safety Function	Safety Gear	✓	✓	✓	✓	✓
	ACOP	×	✓	✓	✓	×
	UCM	×	✓	✓	×	×
	EN81-21	×	✓	✓	×	×



SLG Sliding Guide Shoes

- All rail conditions
- Smooth Motion
- ISO T shape guide rails
- Wittur compatibility



	SLG1	SLG6/7	RGF125	WRG100	WRG80
	Sliding Guide Shoes		Roller Guide Shoes Fixed Roller Type	Roller Guide Shoes Spring roller technology	

Guide Rail Blade [mm]	8 ÷ 32	5 ÷ 19	9 ÷ 16	9 ÷ 16	9 ÷ 16
Max. Speed CAR [m/s]	2	1,6	2	3,5	2,5



WRG Roller Guide Shoes



Overspeed Governors



- All safety functions
- Quicker installation time
- Wittur reliability
- Wittur compatibility



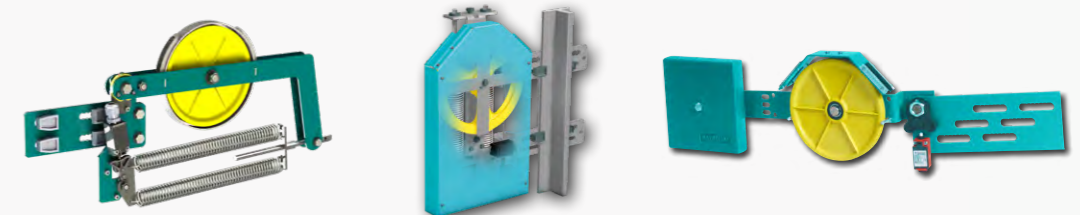
OL20 **OL35** **EOS**

Tripping Direction	Mechanical	Uni-directional	Uni-directional	Uni/Bi-directional
	Electrical	Bi-directional	Bi-directional	Bi-directional
Max Rated Speed [m/s]		1,75	3	2,5
Max. Travel Height [m]		60	165	120
Rope diameter [mm]		6	6 / 6,5 / 8	6 / 6,5 / 8
Pulley diameter [mm]		180	200 / 203 / 262	200 / 300
Min. Brake Force [Kg]		-	500 / 800 / 1.100	500 / 800
Safety Function	Safety Gear Tripping	✓	✓	✓
	ACOP	✓	✓	✓
	UCM	X	X	✓
	EN81-21	X	X	X



Tension Devices

- Short installation time
- ISO T shape guide rails
- Smooth Motion
- Wittur compatibility



STW **CTW** **TWS**

OSG	OL20	OL35 / EOS	OL35 / EOS
Max Rated Speed [m/s]	1,75	3,5	2,5
Max Travel Height [m]	60	150	80
Rope diameter [mm]	6	6 / 6,5 / 8	6 / 6,5 / 8
Tension Force [N]	400	250 ÷ 1.400	250
Pulley diameter [mm]	180	204 / 255	204 / 255
Guide Rail Type	T70 / T82 / T89 / T90	T70 / T82 / T89 / T90 / T125 / T127 / T140-1-2	T70 / T82 / T89 / T90 / T125 / T127
Fixation	Guide Rail Fixing	Guide Rail Fixing & Pit Fixing	Guide Rail Fixing & Pit Fixing

Diverting Pulleys

- Wittur compatibility
- Wittur quality



	Rope diameter [mm]	Sheave diameter [mm]	Max. number of ropes	Rope pitch [mm]
Steel Ropes	6/6,5	160 / 240	8	11/12
	8	330	8	12
PU Coated Ropes	6,5 / 8,1	160	6	12

Rope Terminal Ends

- Easy ordering process
- Smooth Traction & Ride Comfort



	Rope ø [mm]					
	6	6,5	8	10	6,5	8,1
Steel	✓	✓	✓	✓	×	×
PU-Coated	×	×	×	×	✓	✓

Steel Ropes
 PU Coated Ropes



Wittur Services



WITTUR SERVICES
Training

Training offered directly from our experts in R&D and application engineering.

WITTUR SERVICES
On Site Survey

We can assist you in determining the best components for your needs.

WITTUR SERVICES
Condition Reports

On site installation review to provide documented feedback and recommendations for improvements and upgrades.

WITTUR SERVICES
On Site Assistance

Qualified Wittur technicians can join and support your team during the installation.

WITTUR SERVICES
Customized Design

Offering both standard and customised designs, complete with all associated documentation, certifications and qualifications.

WITTUR SERVICES
ELEVATORSENSE®

how to use ElevatorSense® effectively, the digital companion for your field operations.

CONFIGURE YOUR CAR





WITTUR

YOUR GLOBAL PARTNER FOR COMPONENTS,
MODULES AND SYSTEMS IN THE ELEVATOR INDUSTRY



WITTUR.COM



 **ADVANCING** THE ELEVATOR INDUSTRY®

Subject to change without notice / SB 21004180 Ed. 1 Rev. 4 - February 2023