

Features  
产品特性

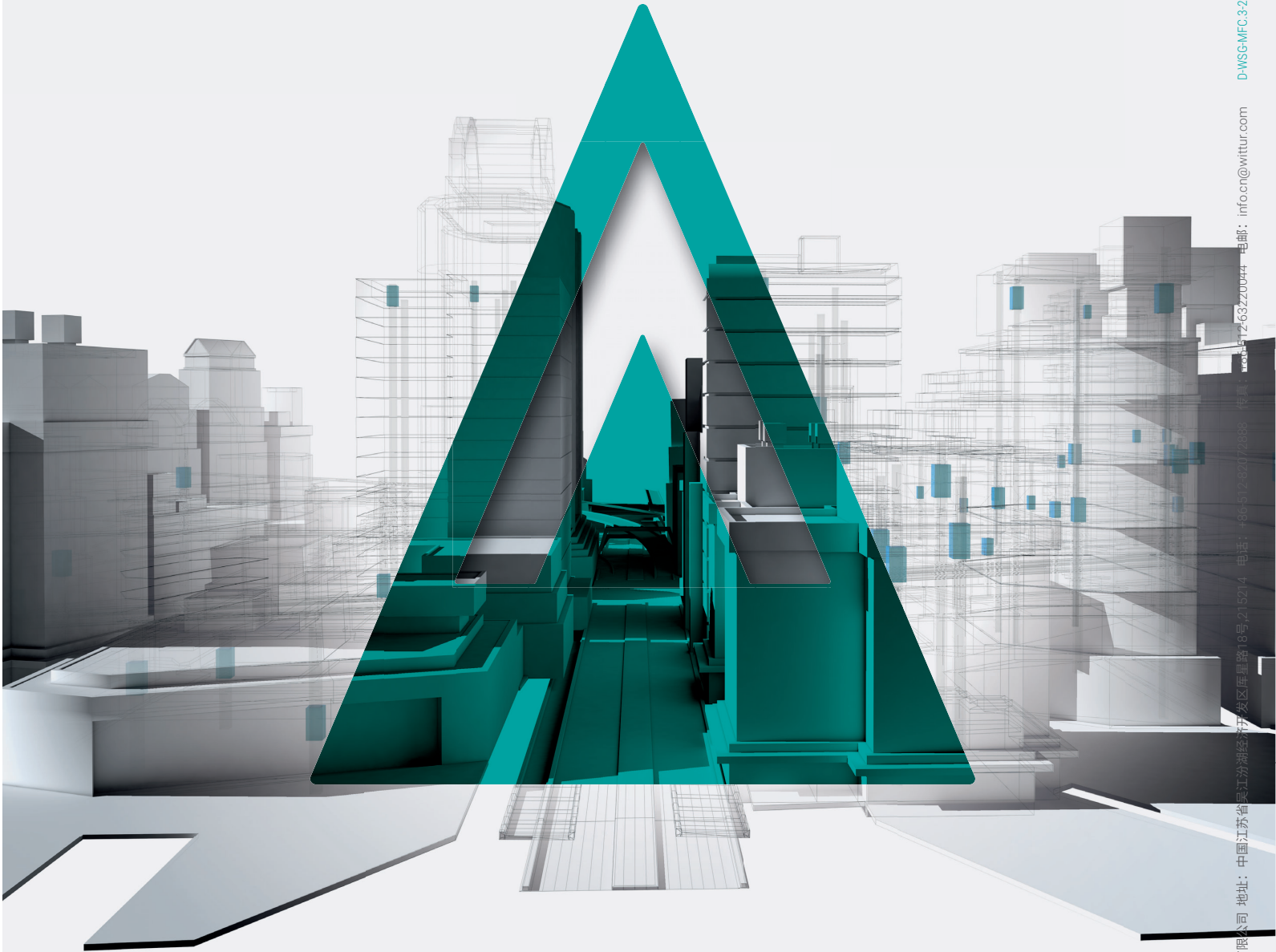
Housing design provides stable and high structural rigidity. Design is verified FEM and physical mechanical test.	机座结构设计刚度高,可靠稳定。设计方案经过有限元分析,具有高安全系数。
Designed by inner rotor. Possible to generate bigger torque with low noise and vibration. Provides comfortable ride.	电机采用内转子结构;噪音低,振动小,运行平稳舒适
Solid construction for permissible shaft load Fs at the traction sheave up to 55kN	结构紧凑,性能稳定,最大轴载荷 55kN
Disk electro-magnetical brake provides min. braking torque 2x1400Nm	盘式电磁制动器,提供 2x1400Nm 的制动力矩
Fulfill Wittur enterprise standard WST-00515.ZH CTE test approved according to GB/T 7588.1&2-2020 and TSG T7007-2022	符合威特企业标准 WST-00515.ZH 型式试验满足 GB/T 7588.1&2-2020 要求,按 TSG T7007-2022 标准测试
Groove profiles according to lift system	根据电梯曳引系统设计绳槽
Perfect rated motor, use of high - performance permanent magnet, degree of protection IP41, insulation class 155 C (F), temperature control	使用高效永磁,防护等级 IP41, 绝缘等级155 C (F), 带温度报警
Motor with 1.5 times overload capacity ; Recommended max. travelling height up to 120m	1.5 倍过载能力; 推荐最大提升高度 120m
CE type-examination certificate according to EN 81-20/50, can be used for UCM solution	满足 EN81-20/50 的 CE 证书, 可以用作防轿厢意外移动(UCM)解决方案
Inverter compatible measuring device, rigid coupling or intergrated. (e.g. ECN 1313; ERN 1387; TS5213N2503; EI53C9.25-2048-SA5N2T)	适用于变频器控制,带编码器测量,如ECN 1313; ERN 1387; TS5213N2503; EI53C9.25-2048-SA5N2T
Cost - and energy-efficient	经济节能
The braker passed 2 million times braking. After the test, its performance is still in specification. Safety is guaranteed.	制动器经历 200 万次以上的动作测试,安全可靠。

Content of supply  
供货内容

- \* Gearless synchronous inner rotor drive with:
    - Traction sheave
    - Braking system
    - Measuring and feedback system (encoder)
  - \* Manual release device for brake (option)
  - \* Remotely controlled bowden cable for brake (option)
  - \* Connection cable for encoder (option)
  - \* All technical documents necessary for approval and detail operation manual
- \* 永磁同步内转子电机, 包括:
    - 曳引轮
    - 制动器
    - 测量反馈系统(编码器)
  - \* 手动松闸装置(选项)
  - \* 远程松闸装置(选项)
  - \* 编码器连接线(选项)
  - \* 所有的必要的技术文件以及详细的操作手册



YOUR GLOBAL PARTNER FOR COMPONENTS,  
MODULES AND SYSTEMS IN THE ELEVATOR INDUSTRY



ADVANCING THE ELEVATOR INDUSTRY®

www.wittur.com



WSG-MFC.3  
GEARLESS SYNCHRONOUS TRACTION MACHINE  
无齿轮同步曳引机

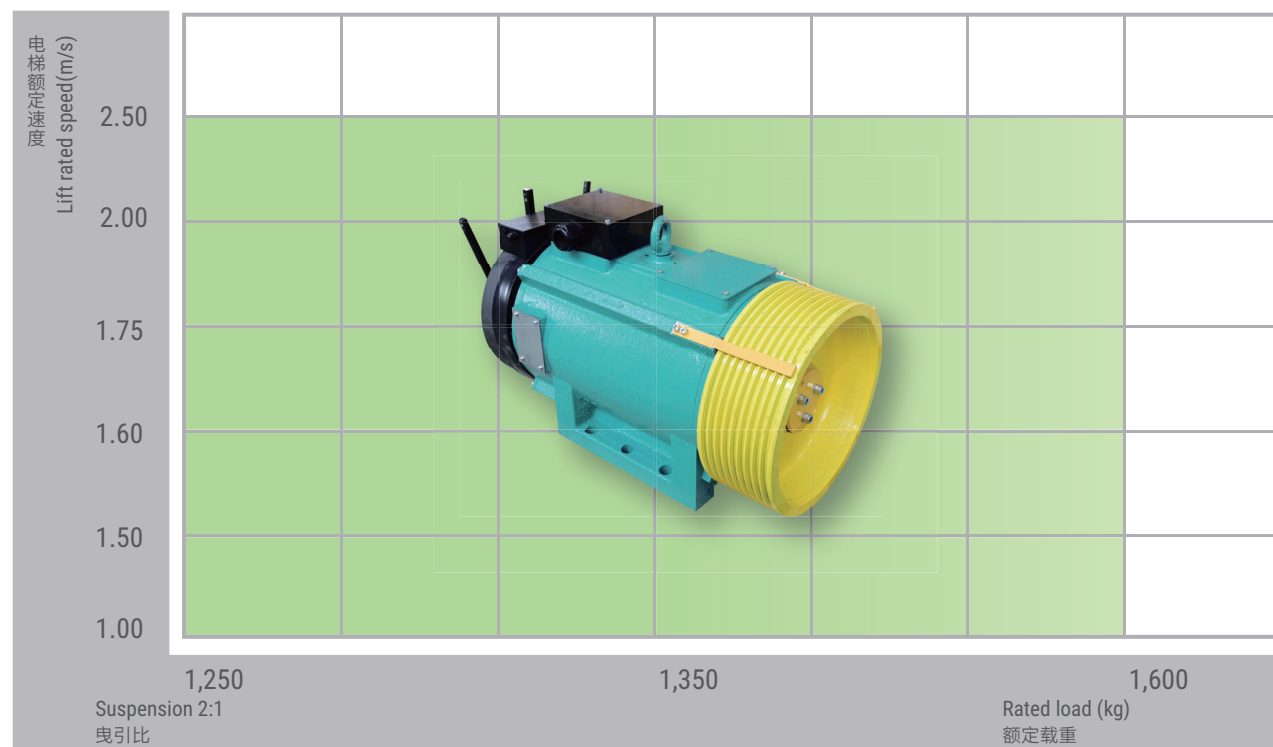


威特电梯部件 (苏州) 有限公司 地址: 中国江苏省吴江汾湖经济开发区阜康路18号215204 电话: +86 512 63220044 电邮: info.cn@wittur.com DWSG-MFC.3-2407-WU-V0



## Product range WSG-MFC.3 series

### WSG-MFC.3 系列产品覆盖范围

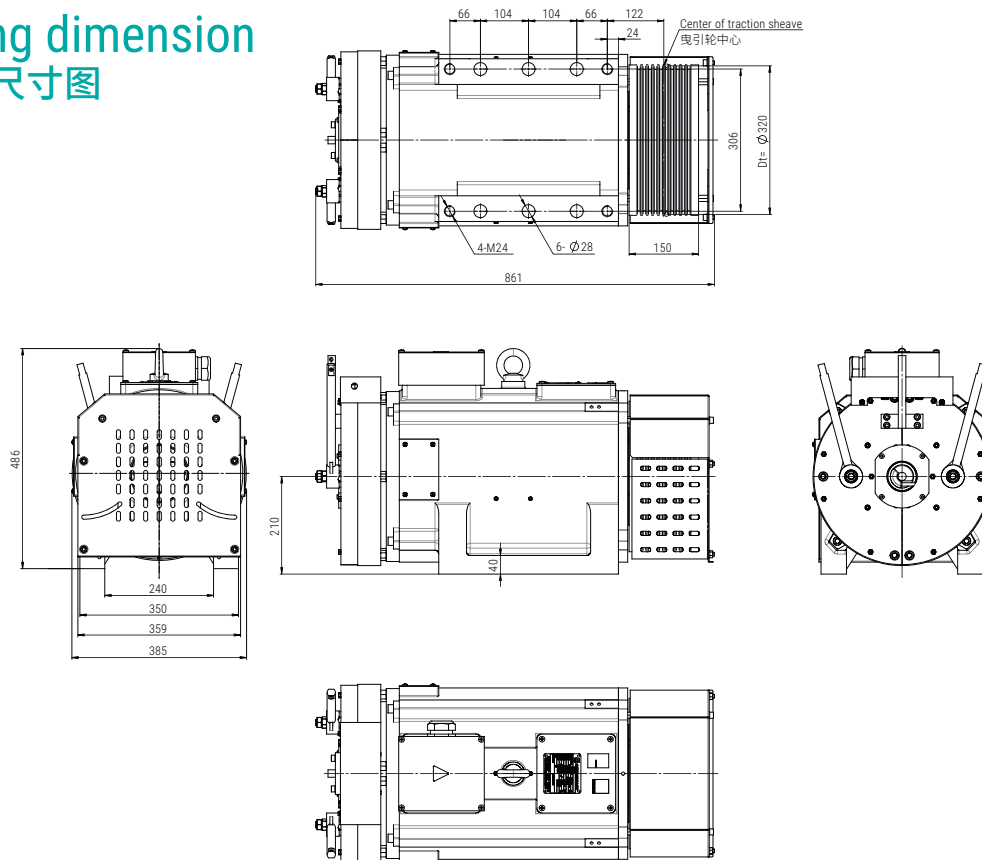


	WSG-MFC.3 SERIES					
Rated loads up to (kg) 最大额定载重	1250		1350		1600	
Rated torque(N.m) 额定转矩	646	807	698	872	827	1033
Inertia J <sub>e</sub> [kgm <sup>2</sup> ] 惯性力矩	24.5	28.2	24.5	28.2	24.7	28.4
Traction sheave Ø (mm) 曳引轮直径	320	400	320	400	320	400
Rated speed (m/s) 额定速度	1.0 ... 2.5					
Shaft load (kN) 轴负荷	55kN					
CTE test CTE型式试验	Y					
Motor Type 电机类型	Glearless PM synchronous 无齿轮永磁同步					
* Net weight (kg) 净重	380	410	380	410	390	420
MRL solution 无机房方案	Applied 适用					
Installation 安装方式	ONLY vertical installation in machine room or top of the shaft 仅在井道顶部或机房垂直安装					

\*The mechanical evacuation system isn't included, when we measure its weight and thickness  
计算重量和厚度尺寸时,未包括盘车齿轮等应急疏散设备。

**ØDT=320mm**

## Fixing dimension 安装尺寸图



## Technical data for traction machine 曳引机技术参数

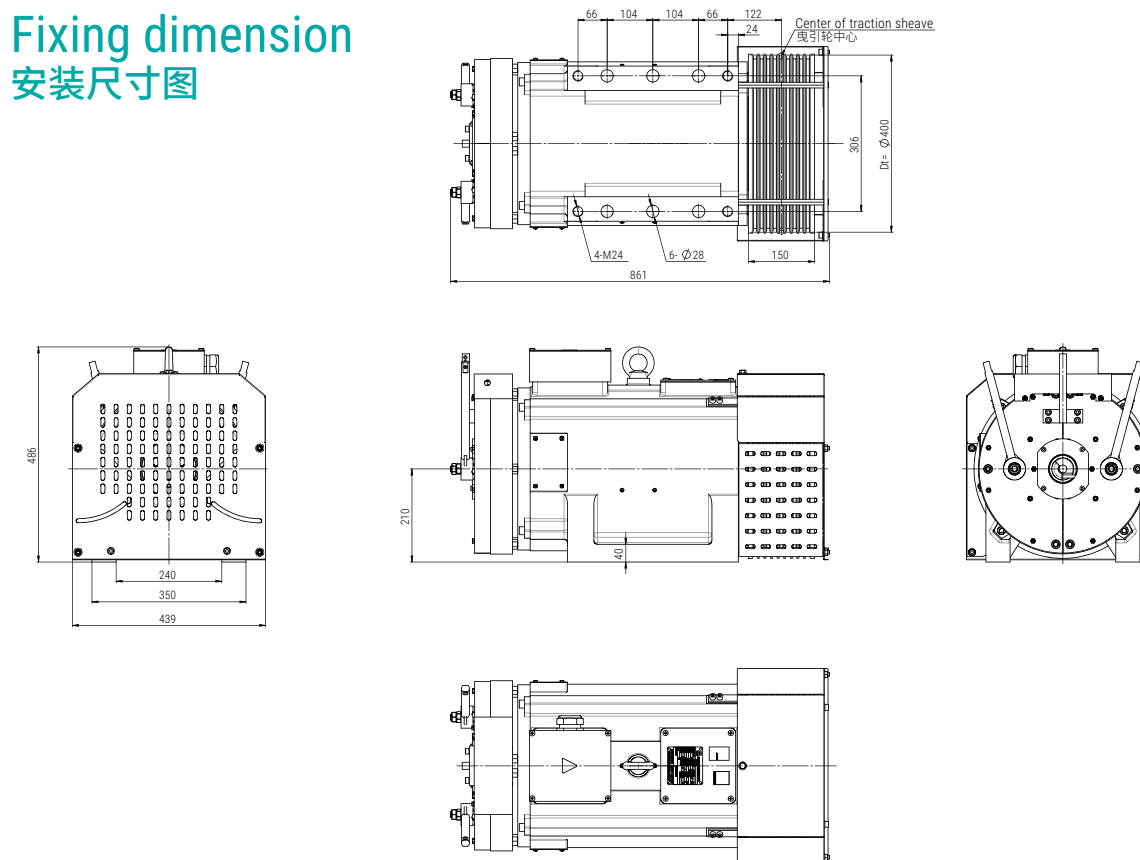
Motor Type 电机型号		Synchronous/同步										16-pole/16极					
		WSG-MFC.3															
Rated Torque/额定转矩: 55-40%, 2400r/min		Mn (N.m)	646					698					827				
Shaft 曳引轮		ØDt (mm)	320					320					320				
Loads 额定载重		Q (kg)	1250					1350					1600				
Suspension 曳引比		2:1															
Groove profile (N X ØD-P) 曳引绳槽槽		U - groove/槽: 8/9/10xØ8-12; γ=30°; β=100° or γ=35°; β=96°															
Motor current applicable to 380V link voltage 适用于变频器 母线电压 380V	V (m/s)	$\frac{P_u}{[rpm]}$	$P_u$ [KW]	$I_u$ [A]	$U_u$ [V]	$F_u$ [Hz]	$\frac{P_u}{[rpm]}$	$P_u$ [KW]	$I_u$ [A]	$U_u$ [V]	$F_u$ [Hz]	$\frac{P_u}{[rpm]}$	$P_u$ [KW]	$I_u$ [A]	$U_u$ [V]	$F_u$ [Hz]	
	1.0	119	8.1	19.1	380	15.9	119	8.7	20.6	380	15.9	119	10.3	23.6	380	15.9	
	1.5	179	12.1	25.5	380	23.9	179	13.1	27.5	380	23.9	179	15.5	32.7	380	23.9	
	1.6	191	12.9	29.7	380	25.5	191	14	32.1	380	25.5	191	16.5	36.2	380	25.5	
	1.75	209	14.1	29.7	380	27.9	209	15.3	32.1	380	27.9	209	18.1	36.2	380	27.9	
	2.0	239	16.2	32	380	31.9	239	17.4	34.6	380	31.9	239	20.7	40.2	380	31.9	
2.5	298	20.2	39.4	380	39.7	298	21.8	42.5	380	39.7	298	25.8	53	380	39.7		

## Technical data for Brake 制动器技术参数

Motor Type 电机型号	Brake Type 制动器型号	Certificate Type 证书类型	Pull in Voltage 吸合电压 (V)	Holding Voltage 保持电压 (V)	Rate Current 额定电流 (A)	Brake Torque 制动力矩 (Nm)
WSG-MFC.3	WD1400	CTE/CE	DC 110	DC 110	2x1.96	≥2x1400

**ØDT=400mm**

## Fixing dimension 安装尺寸图



## Technical data for traction machine 曳引机技术参数

Motor Type 电机型号		Synchronous/同步								16-pole/16极							
WSG-MFC.3																	
Rated Torque/额定转矩: S5-40%, 2400r/h	MN (N.m)	807				872				1033							
Shaft 轴引径	ØDt (mm)	400				400				400							
Loads 额定载重	Q (kg)	1250				1350				1600							
Suspension 曳引比	2:1																
Groove profile (N x ØD-P) 曳引轮绳槽	U - groove/槽: 7/8/9xØ10-15; γ=35°; β=96° or V - groove/槽: 7/8/9xØ10-15; γ=40°; β=105°																
Motor current applicable to 380V link voltage 适用于变频器 母线电压 380V	V (m/s)	Πu [rpm]	Πu [KW]	Iu [A]	Uu [V]	Fu [Hz]	Πu [rpm]	Πu [KW]	Iu [A]	Uu [V]	Fu [Hz]	Πu [rpm]	Πu [KW]	Iu [A]	Uu [V]	Fu [Hz]	
	1.0	95	8.1	19.7	380	12.7	95	8.7	21.1	380	12.7	95	10.3	24.3	380	12.7	
	1.5	143	12.1	27	380	19.1	143	13.1	29.2	380	19.1	143	15.5	34.4	380	19.1	
	1.6	153	12.9	29.4	380	20.4	153	14	31.7	380	20.4	153	16.5	37.4	380	20.4	
	1.75	167	14.1	29.4	380	22.3	167	15.3	31.7	380	22.3	167	18.1	37.4	380	22.3	
	2.0	191	16.2	44.4	380	25.5	191	17.4	37.1	380	25.5	191	20.7	42	380	25.5	
	2.5	239	20.2	42.6	380	31.9	239	21.8	46	380	31.9	239	25.8	57.6	380	31.9	

## Technical data for Brake 制动器技术参数

Motor Type 电机型号	Brake Type 制动器型号	Certificate Type 证书类型	Pull in Voltage 吸合电压 (V)	Holding Voltage 保持电压 (V)	Rate Current 额定电流 (A)	Brake Torque 制动力矩 (Nm)
WSG-MFC.3	WD1400	CTE/CE	DC 110	DC 110	2×1.96	≥2×1400