

EN 81-20/50:2014

LAWS, DIRECTIVES AND STANDARDS



- SAFETY RULES FOR THE CONSTRUCTION AND INSTALLATION OF LIFTS
- LIFTS FOR THE TRANSPORT OF PERSONS AND GOODS
- PART 20: PASSENGER AND GOODS PASSENGER LIFTS
- PART 50: DESIGN RULES, CALCULATION, EXAMINATION AND TEST OF LIFT COMPONENTS

LAWS, DIRECTIVES AND STANDARDS: EN 81-20/50:2014



1985/87

Publication of the **EN 81-1/2**, which defined the rules for construction and installation of electric and hydraulic lifts in all European countries.

1995

Publication of the **Lift Directive LD 95/16/EC** which established European legal requirements for the design, installation and placing on the market of new lifts, safety components and their conformity assessment procedures. It became mandatory starting from July 1st 1999.

6th August
2014

Publication of **EN 81-20/50** which revises the **EN 81-1/2+A3** standards with a transition period of 3 years.

20th April
2016

Enforcement of the **LD 2014/33/EU** which revises **LD 95/16/EC** without any transition period.

31st August
2017

Revision of **EN 81-1/2+A3**. Starting from the 1st of September 2017, **EN 81-20/50** will be the only binding standard.

The **EN 81-20/50** will be adopted on a global scale, not only in Europe. Especially in China, known as **GB 7588** it will come into force at first place starting from mid of 2016.



Major changes to elevators and elevator components according to the EN 81-20/50:2014

1. **Doors** Stricter requirements for the strength of landing and car doors.
2. **Cars** For the first time requirements for strength of car walls.
3. **Slings/frames** Protection for diverting pulleys.
4. **Safeties** Specific requirements for safety components and UCM-devices.
5. **Polyurethane/Hydraulic buffers** New definition for requirements for buffers with consideration of maximum peak retardation.
6. **Electrical Drives** New requirements for brake systems, rope calculations and formulas for the traction calculation.
7. **Hydraulic Drives** New requirements for rupture valves, jacks and hydraulic units.



8. **Electronic components** New requirements according to ISO/IEC/EN-norms for electric installations, controllers and safety devices.
9. **Well** Additional requirements to the well access, strength of the well walls and guide rail fixations/calculations.
10. **Complete elevator** New and stricter requirements for working areas in pit & headroom, building interfaces, technical compliance documentation with calculation & certification, placing on the market, putting into service and traceability of components.

The elevator industry will change dramatically in the next years:
All existing safety components and systems will have to be updated.
ARE YOU PREPARED?



2

What does WITTUR offer?

WITTUR is the biggest supplier of elevator solutions in the world. More than 100 international R&D engineers can support you with their broad knowledge and experience.

WITTUR Academy trainings are applied to improve skills and qualifications of your staff with a hands-on approach and modern teaching techniques.

- Norm/product trainings based on the EN 81-20/50.
- Components are already in conformity with all new normative requirements of the EN 81-20/50 by end of 2015.
- Component packages are available for an easier handling of new installations and modernization solutions.
- Complete systems which are already state of the art (and in conformity with all normative changes by end of 2015).
- Support for certifications/documentations from our competent WITTUR staff.



WITTUR opens up a new world of services for elevator companies.

Our R&D facilities and the WITTUR Academy are able to provide you with the normative know-how you need to be ahead of your competitors.

Program for WITTUR customers:

- INSTALLATION TEAMS
- ARCHITECTS
- ELEVATOR CONSULTANTS
- ELEVATOR COMPANIES
- PROJECT PLANNER

ACT NOW AND CONTACT US AT

consulting@wittur.com or +49 (0) 8134 18217

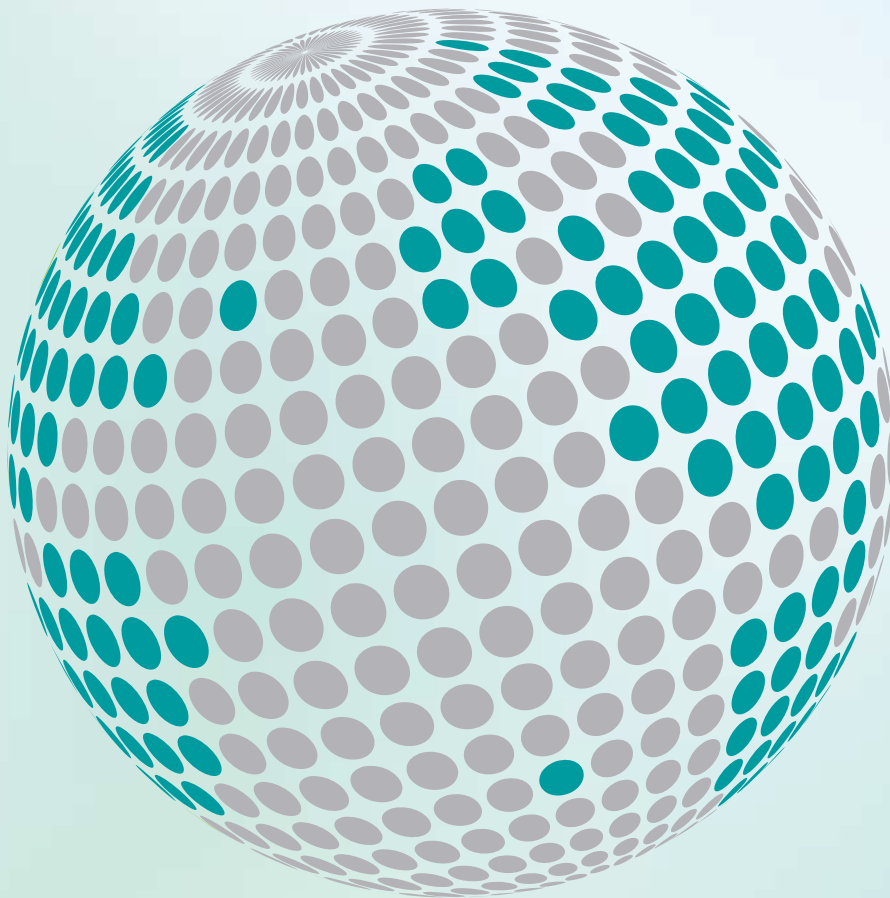
to make your life easier and power the growth of your business.



- Consultancy on norms, certifications and patents
- Application engineering
- WITTUR Academy trainings
- Modernisation and new installations



YOUR GLOBAL PARTNER FOR COMPONENTS,
MODULES AND SYSTEMS IN THE ELEVATOR INDUSTRY



safety **in** *motion*™

www.wittur.com

More information
about Wittur Group
available on-line.

