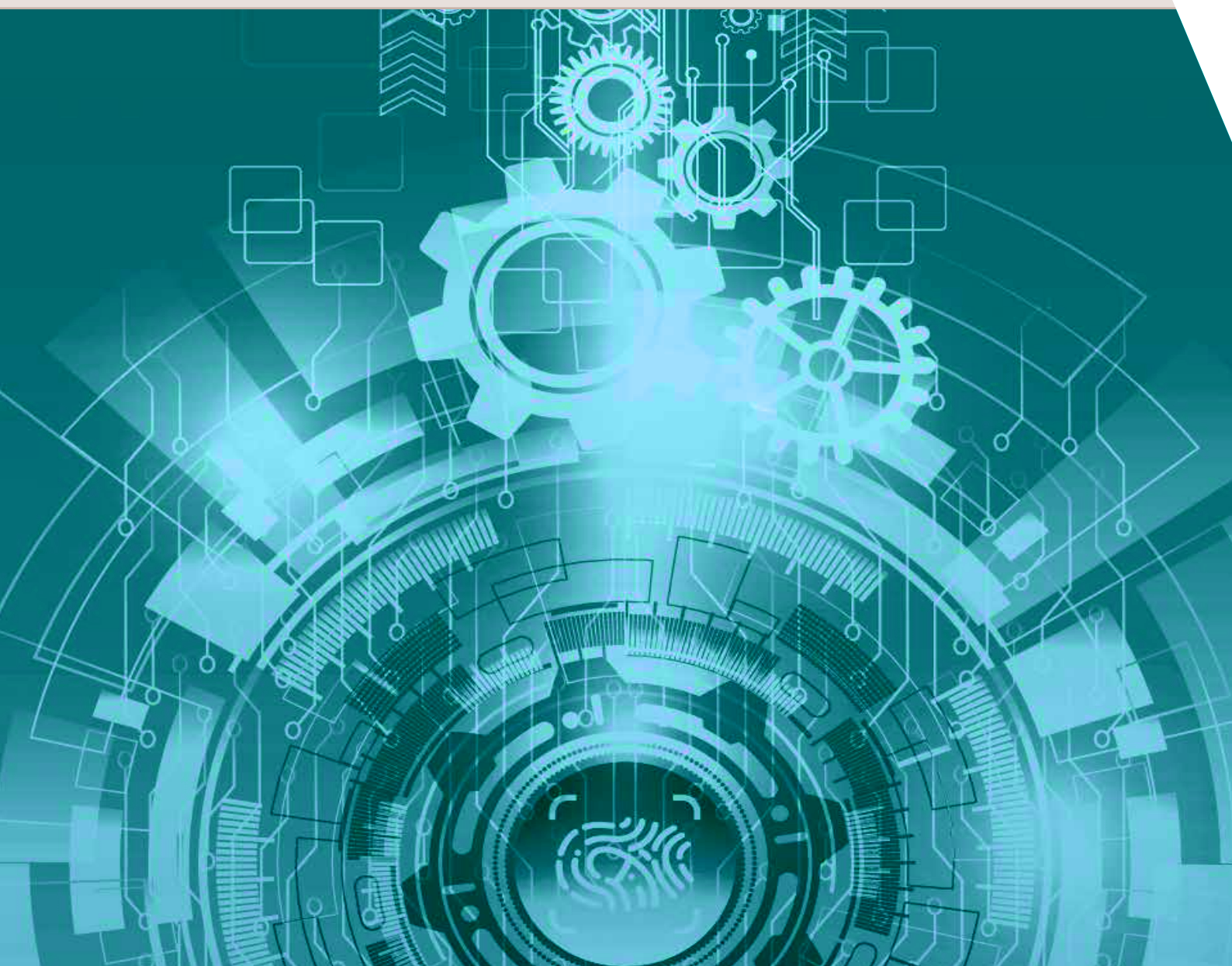


# WITTUR DRAW

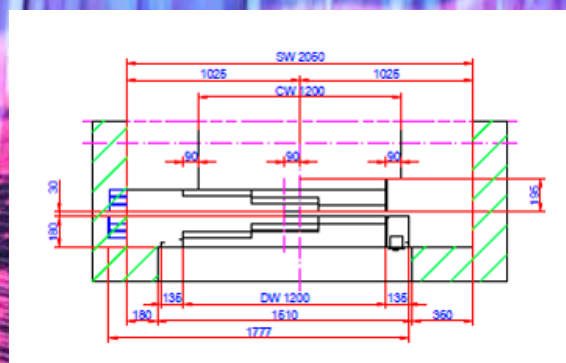
DESIGN THE IDEAL DOORS FOR YOUR LIFT



Register to Wittur website ([www.wittur.com/website/reg\\_user.aspx](http://www.wittur.com/website/reg_user.aspx))

Log in and access Wittur Draw at <https://www.wittur.com/it/wittur-draw.aspx>

Design and configure the ideal doors for your lift!



## Available 24/7, 365 days a year

Wittur Draw is available on the web and it's not distributed through other media (CDs, installation files). This gives the users the chance to have the entire Wittur Lift Doors product range always available, 24/7, 365 days a year. The only system requirement is an internet connection.

## Constantly updated product range

Wittur Draw allows to configure the most used Wittur product lines. Being a web application it's always updated with the latest news and configurations.

## Simple & fast use

Working with Wittur Draw is very easy: the user can choose all the key parameters for the door design in few clicks, with a consistent reduction in time of the design process.

## The right door for every shaft

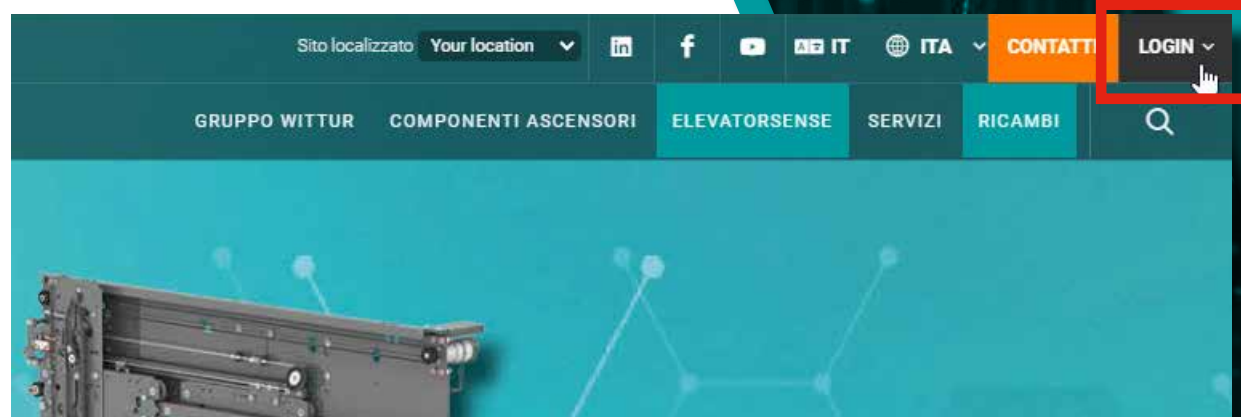
To better check the compatibility of the chosen door package with the other components of the system that you're designing, Wittur Draw allows you to select also some parameters related to the shaft.

## Compatible formats

Wittur Draw offers the chance to save all the drawings in CAD compatible formats (.DWG), 3D files format (.STEP), 3D BIM files (.IFC) and 3D BIM for Autodesk Revit® (.Idbim), guaranteeing their perfect integration with today's most used elevator design software.

## Accessing the tool

Wittur Draw is available in Wittur website's Services Area. The area is password protected, so you need first to register and log in to access.

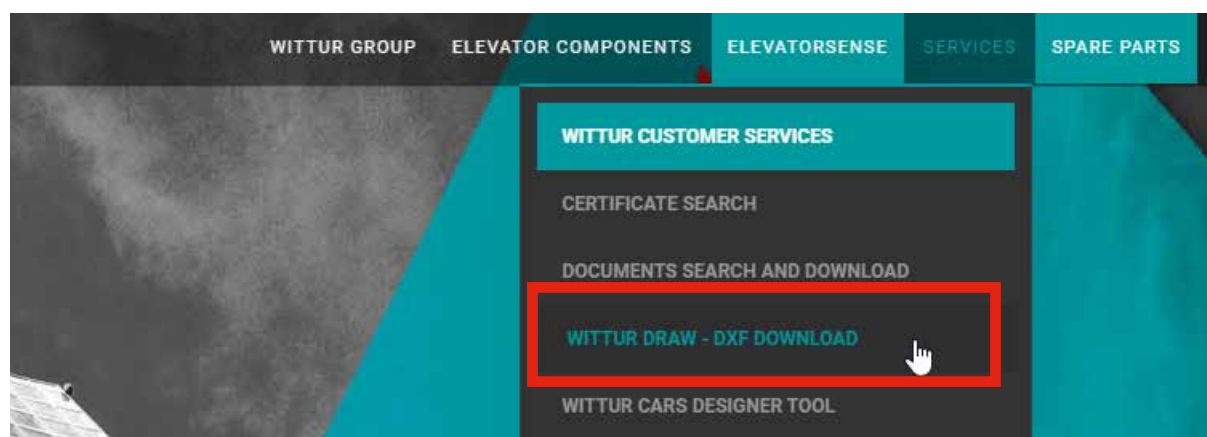


To create an account you have to fill in the registration form at:  
[www.wittur.com/website/reg\\_user.aspx](http://www.wittur.com/website/reg_user.aspx)

After registration, you can log in by inserting your username and password at:  
[www.wittur.com/website/error\\_page.aspx](http://www.wittur.com/website/error_page.aspx)

A screenshot of the 'User registration' form. The form has a header with the title 'User registration' in teal. Below the header are four input fields arranged in a 2x2 grid. The first two fields are labeled 'NAME \*' and 'SURNAME \*'. The last two fields are labeled 'PLEASE CHOOSE A USERID \*' and 'PLEASE CHOOSE A PASSWORD \*'. Each field has a white input box with a light gray border.

Once you are logged in, you can access Wittur Draw at: <http://www.wittur.com/it/Wittur-draw.aspx>



Three tabs are available on the top of the main screen:

**Landing Door | Car Door | Shaft and Car dimensions**



# Landing Door

1

Choose the basic parameters of the landing door you want to work on:

- Door model: choose between Wittur product lines;
- Description and Type: choose the door opening type (e.g. 2RL, 3RL, 2Z,...), the type of frame and type of certification based on those available on that product line;
- Door opening width: this parameter represents the TB/CO/PL according to the selected product line;
- Door opening height: input here the TH/LH according to the selected product line;
- The system shows the values in the range, for additional technical information check the technical catalogue.

2

After this initial selection another list appear to select additional **Landing Door Options** (E.g. Installation type, Cover sill variant., Runby, ...). This list change according to the selected product line.

3

A preview show the result of the selection done with the related technical features.  
Select **Generate 2D & 3D files for landing door** to download the selected model in different formats.

This set of parameters allows to create a basic portal execution for your Wittur landing door.

# Car Door

Choose either “Car doors that fit the selected landing door” or “all available car doors”.

## **Car doors that fit the selected landing door**

To view all the compatible car doors the landing door should be selected first.

## **All available car doors**

In this selection all the car doors available in the Wittur Draw can be seen.

Then select the basic parameters of the car door you want to work on:

- Door model
- Description
- Type
- Door opening width
- Door opening height

## 2

After this initial selection another list appear to select additional **Car Door Options**. This list can change according to the selected product line.

## 3

A preview show the result of the selection done with the related technical features. Select **Generate 2D & 3D files for car door** to download the selected model in different formats.

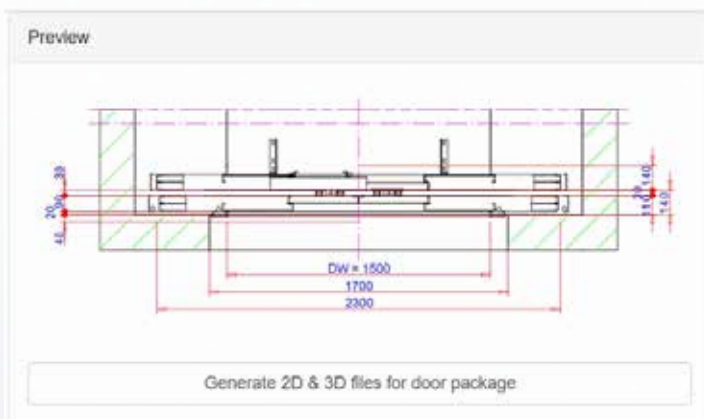
This set of parameters allows to create a basic portal execution for your Wittur car door.

# Shaft & Car dimension



As per the selection done in Landing and Car door pages this Shaft and Car selections is updated. Change the parameters in this page to avoid interference with shaft wall.

Select **Generate 2D & 3D files for door package** to download the needed model in different formats.



## Notes

User can enter the value in some field or/and select from dropdown menu possible option. If the value/selection is out of range, the field will be highlighted in yellow and the content will be automatically update with value or possible option within the range.

The models are prepared based on Technical Catalogue, if other technical changes are needed please contact the Wittur sales department.



WITTUR

**YOUR GLOBAL PARTNER** FOR COMPONENTS,  
MODULES AND SYSTEMS IN THE ELEVATOR INDUSTRY



WITTUR.COM



WITTUR DRAW  
on Wittur.com



**ADVANCING** THE ELEVATOR INDUSTRY®