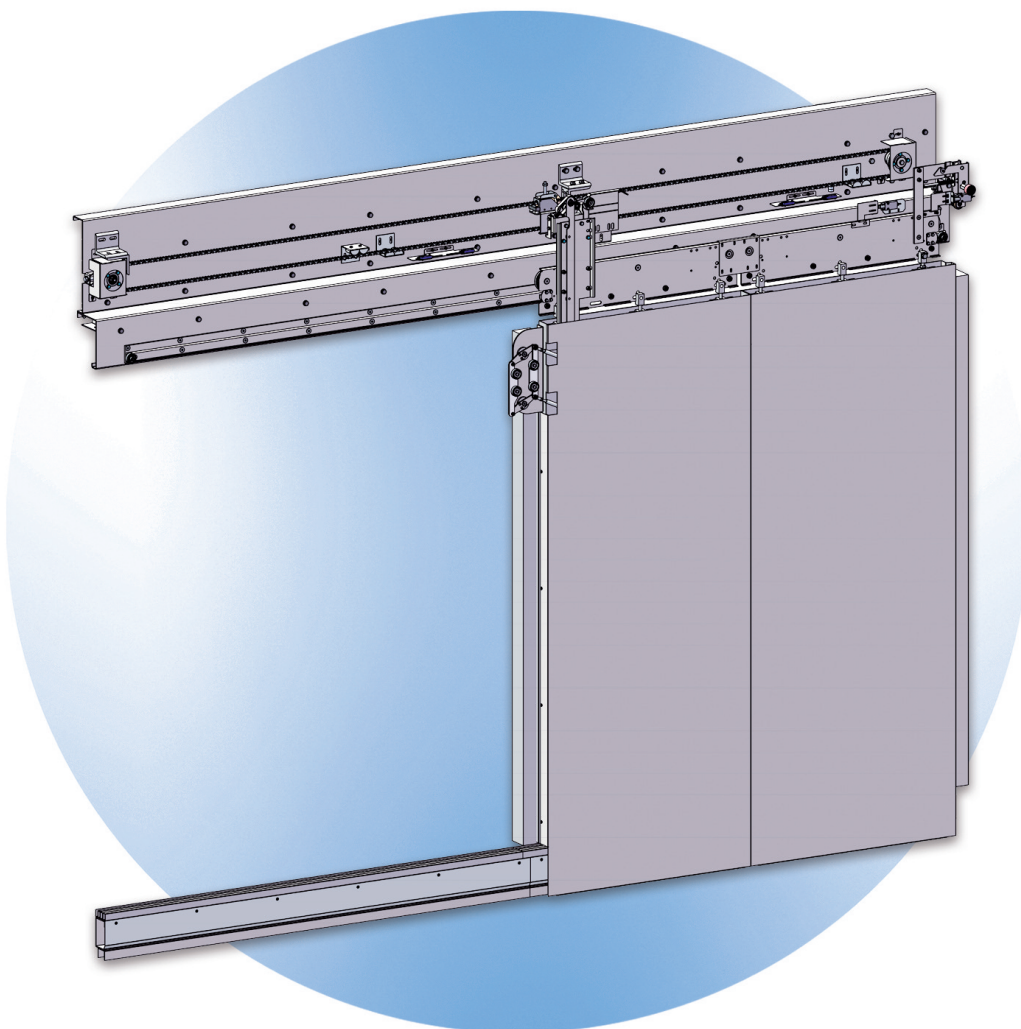


INSTALLATION INSTRUCTIONS

LLOYD'S BUILDING – LONDON TOWER – T7 CAR DOOR



No part of this publication may be reproduced or translated,
even in part, without prior written permission from WITTUR.

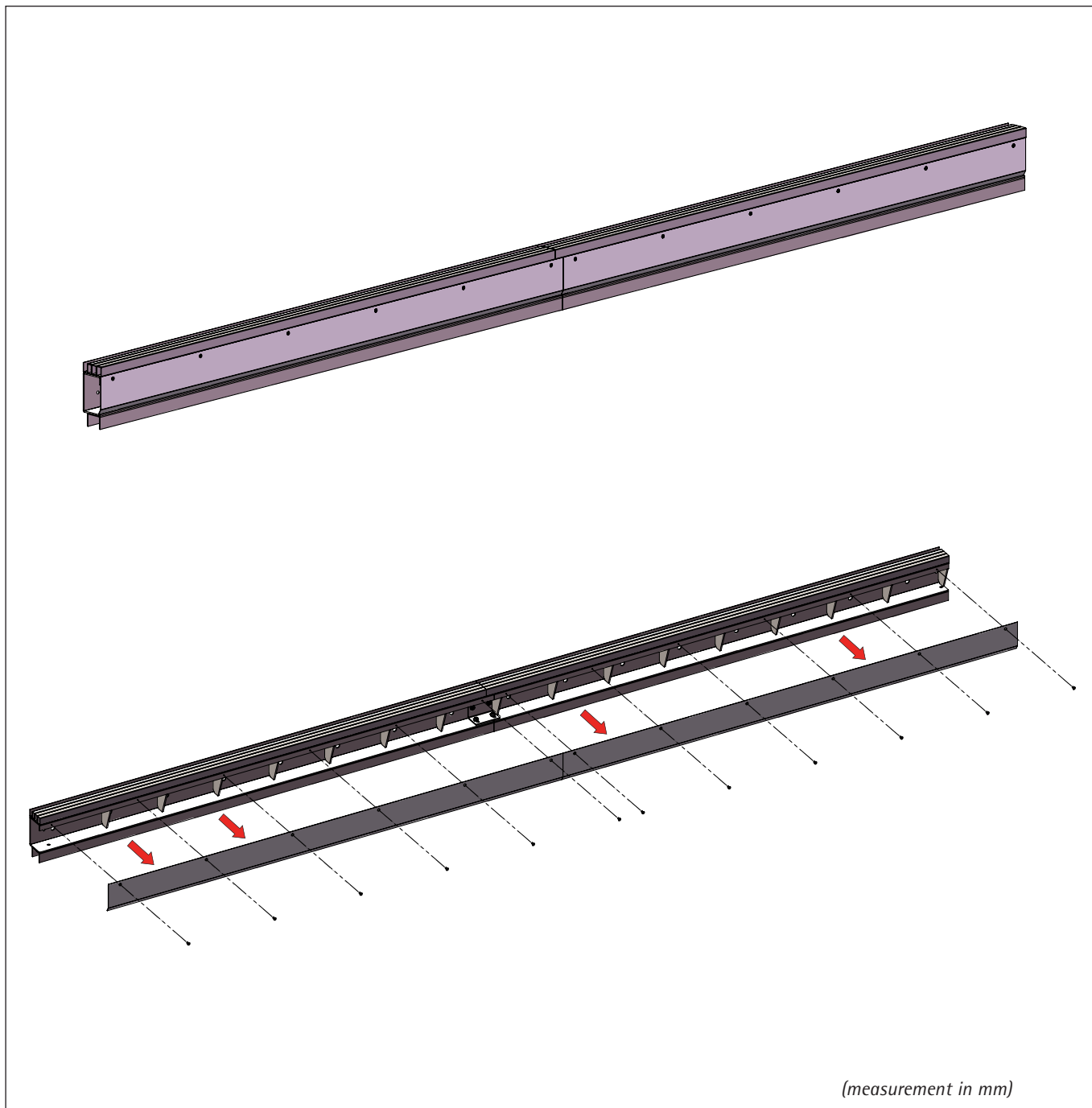
© Copyright WITTUR 2016

URL: <http://www.wittur.com>
e-mail: info@wittur.com

Subject to change without notice!

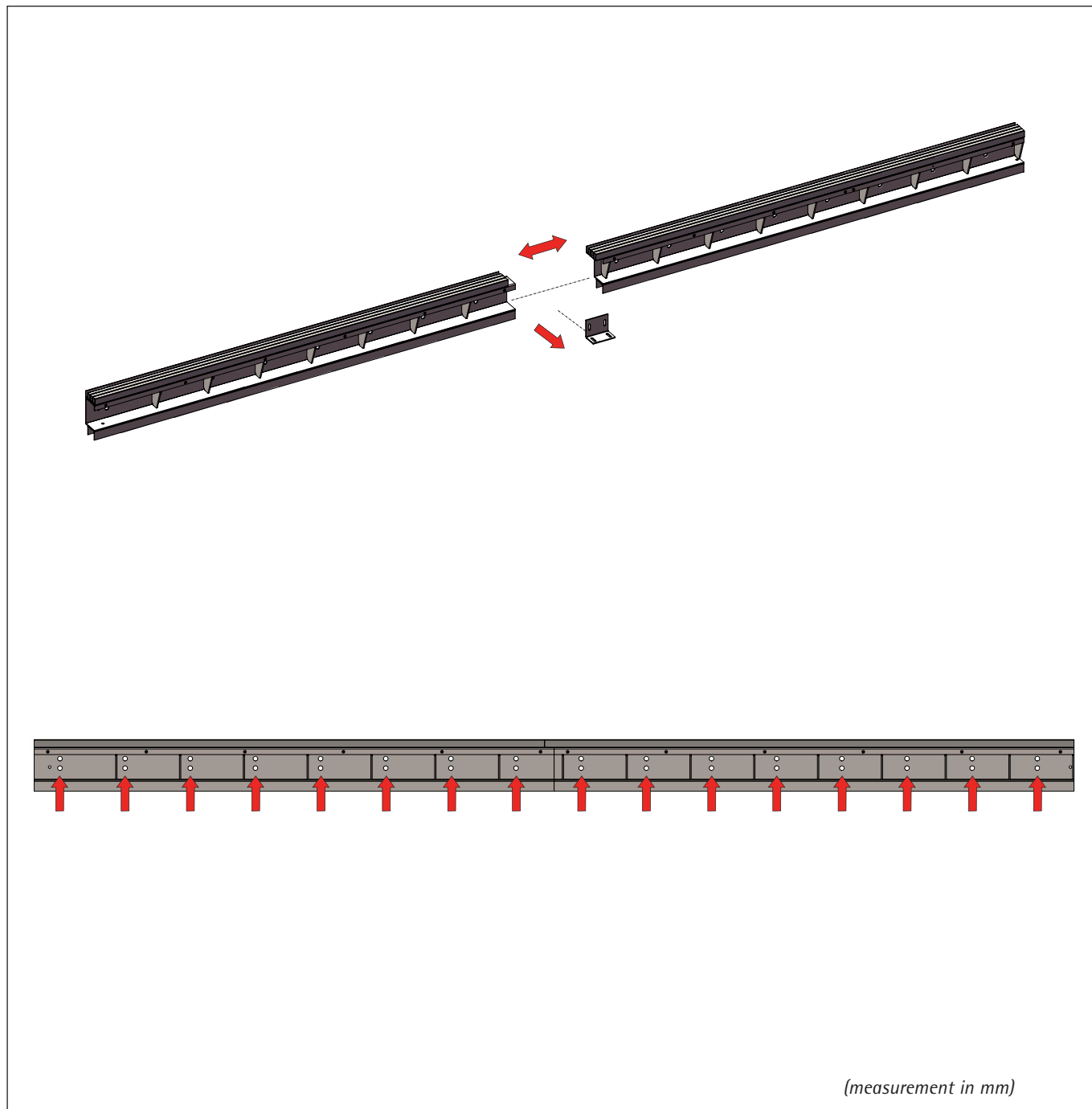
1. SILL

1.1. Remove the components



Remove the toe guard from the new sill, supplied.

1.2. Remove the central bracket



Fix the sill to the car, using the existing holes, according to designed approved drawings.

2. CAR DOOR MECHANISM INSTALLATION ON THE CAR



Fix the mechanism to the car, according to designed approved drawings.

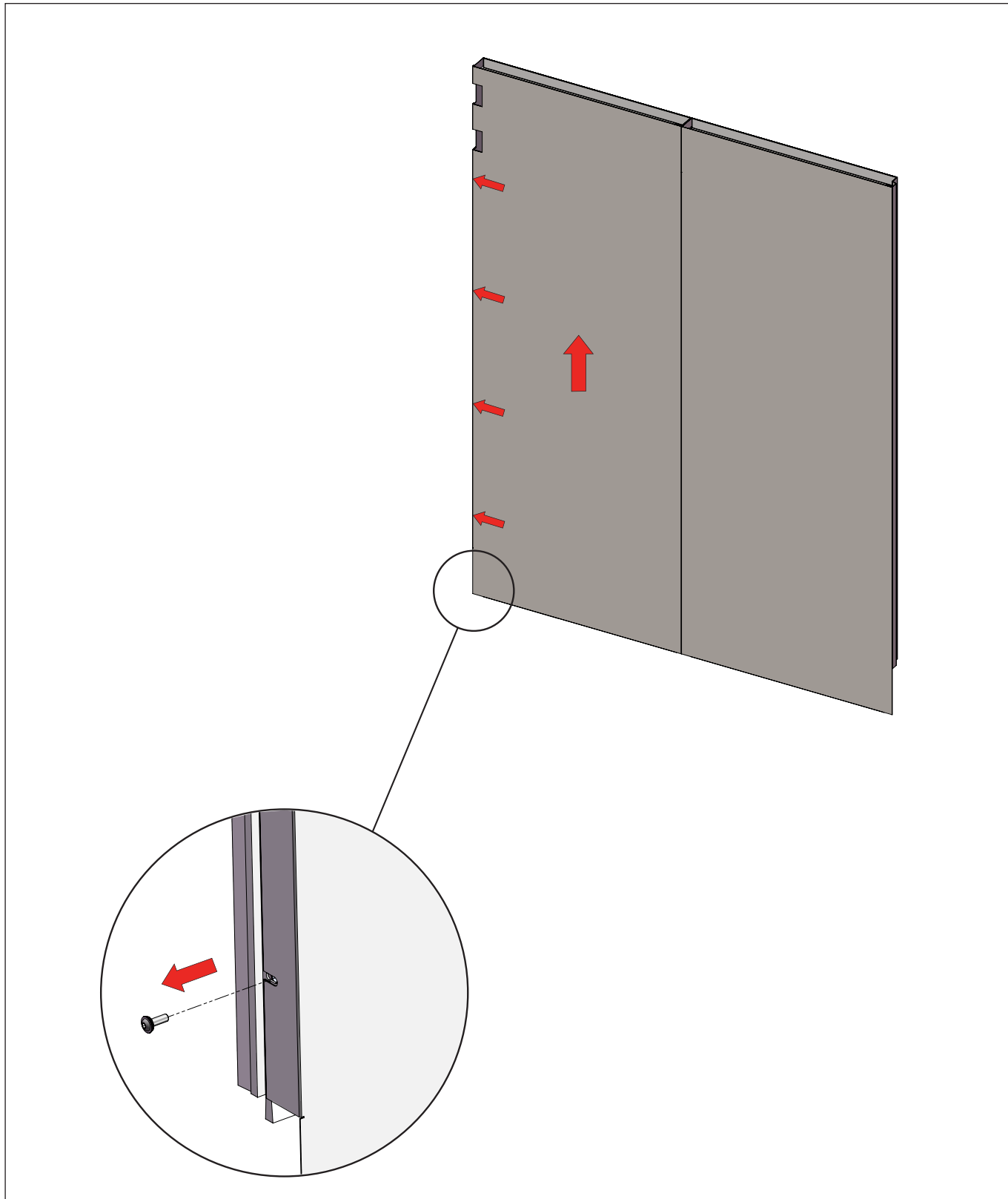
2.1. Assembly of hanger bolts



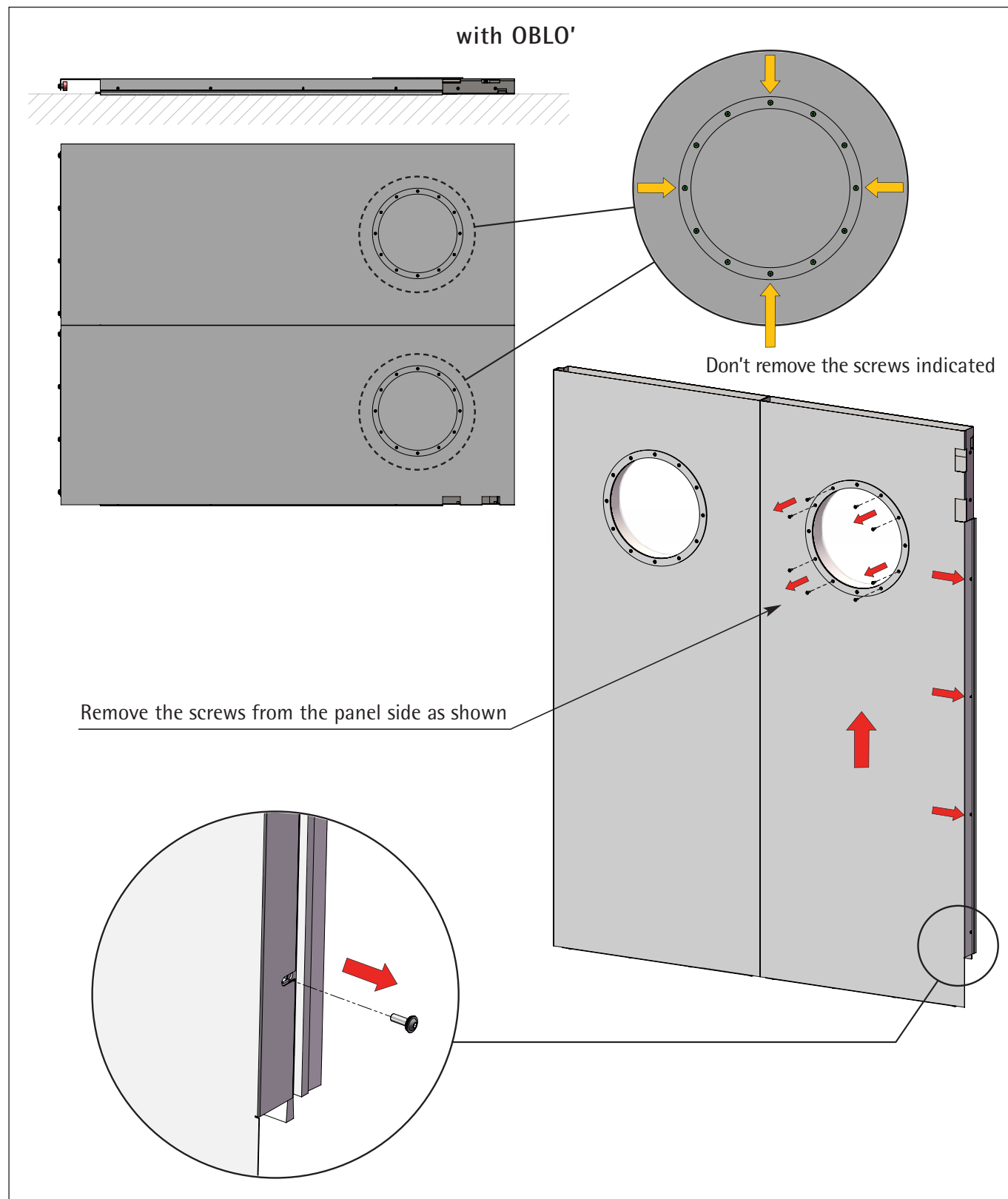
Total panel hanging bolts to install n°6.

3. PANELS INSTALLATION

3.1. Disassembly of the panel Step 1

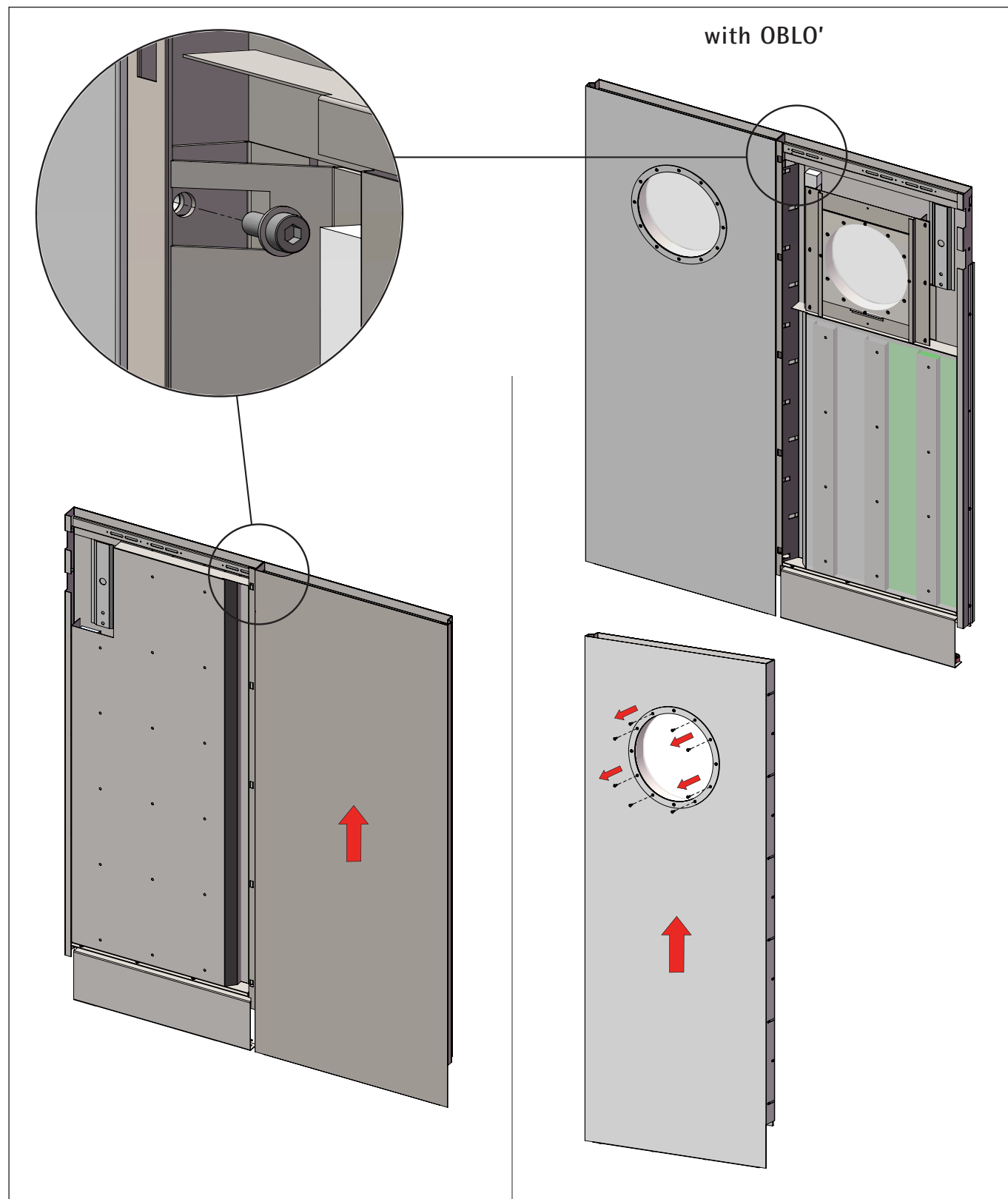


Remove the screws from the panel side as shown.



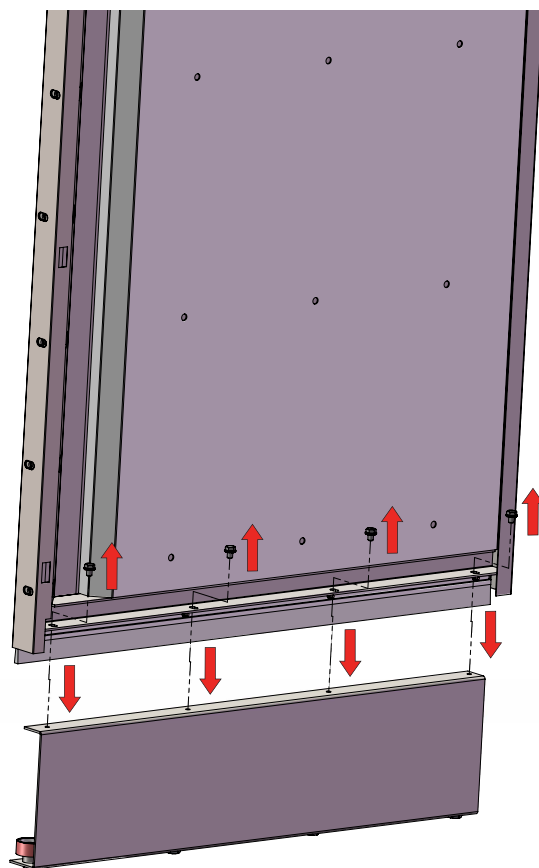
Remove the screws from the panel side as shown.

3.2. Disassembly of the panel Step 2



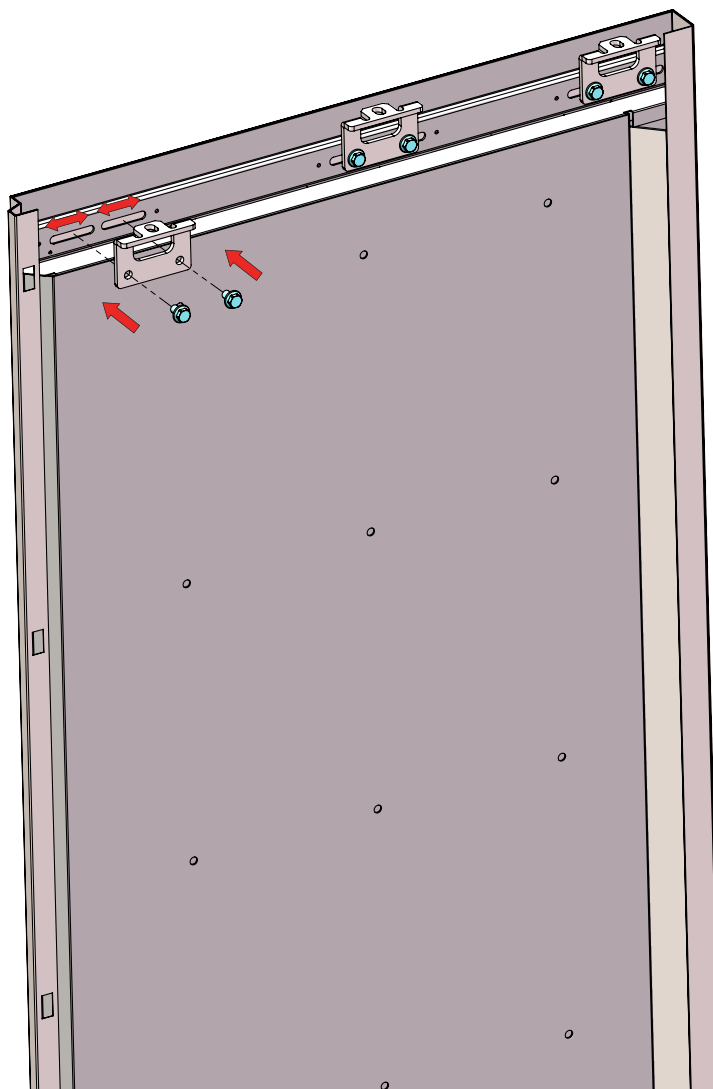
Remove the screws in the middle of it, and divide the panels.

3.3. Disassembly of the lower shoes



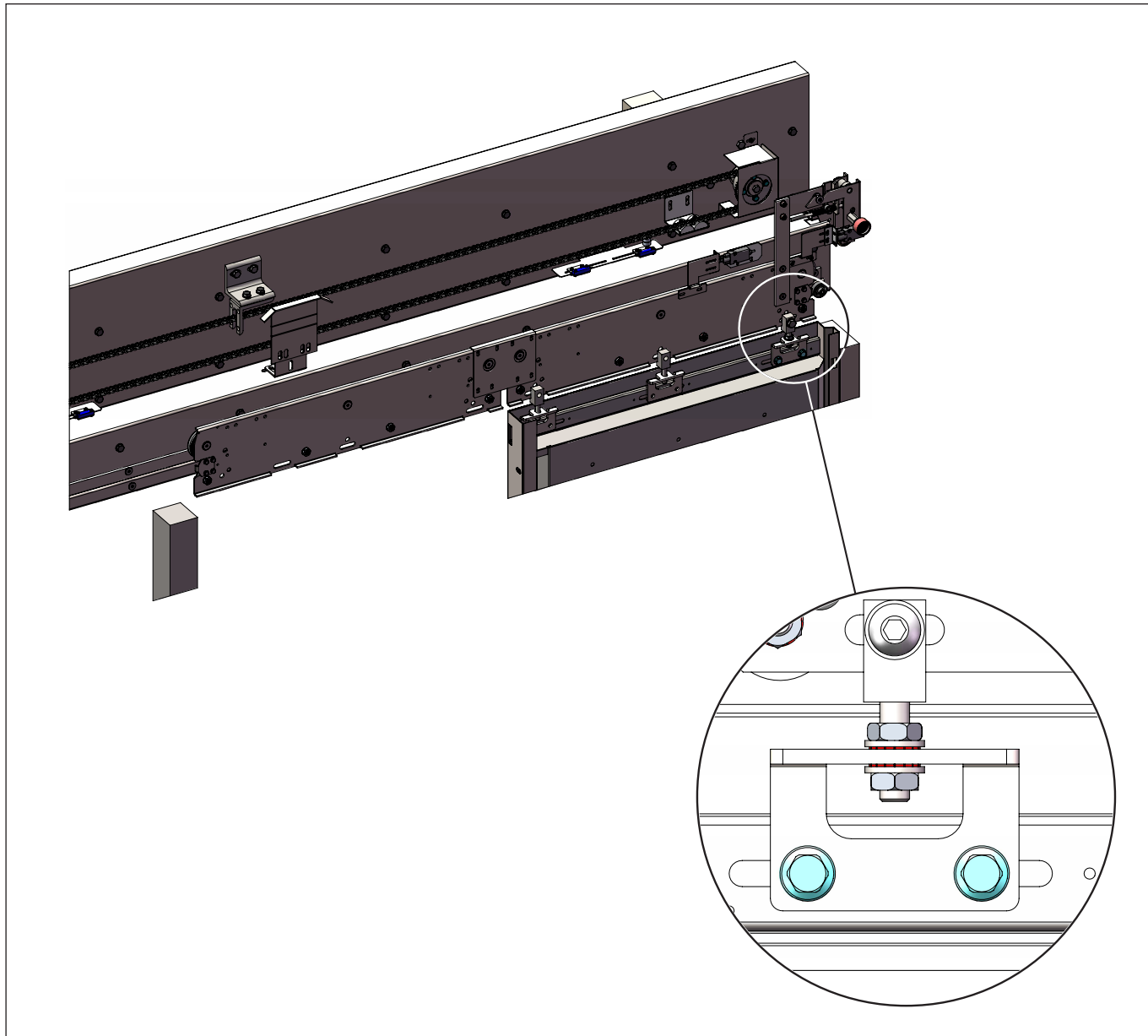
Remove the lower shoes as shown.

3.4. Panel hanging bracket assembly



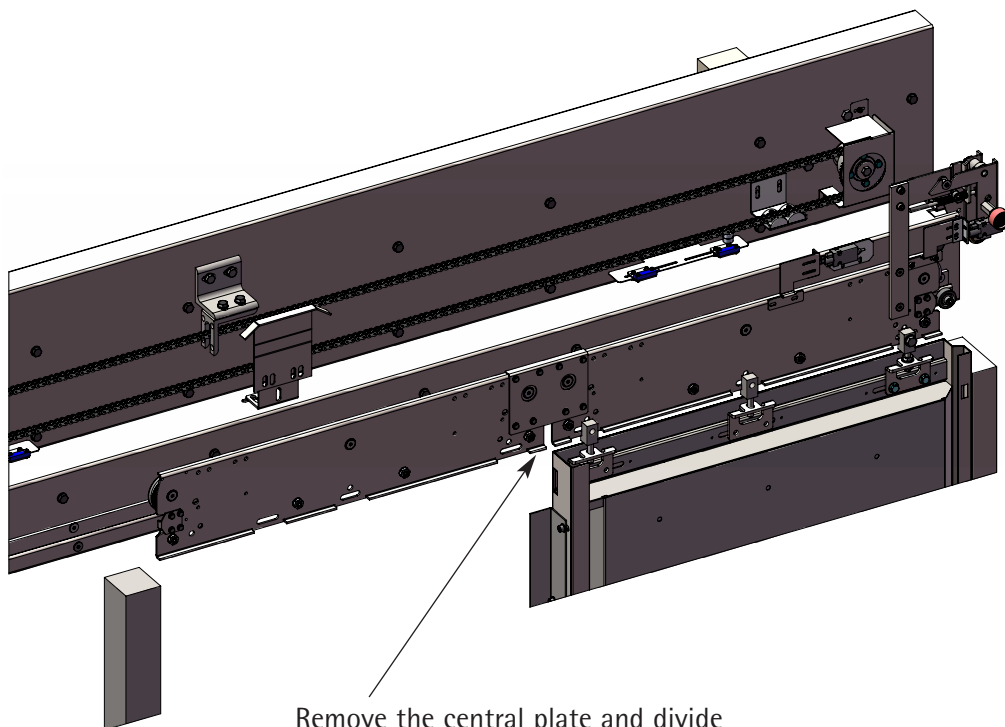
Fix the top brackets, on the panel as shown. Three each panel.

3.5. Assembly of the panel to the mechanism



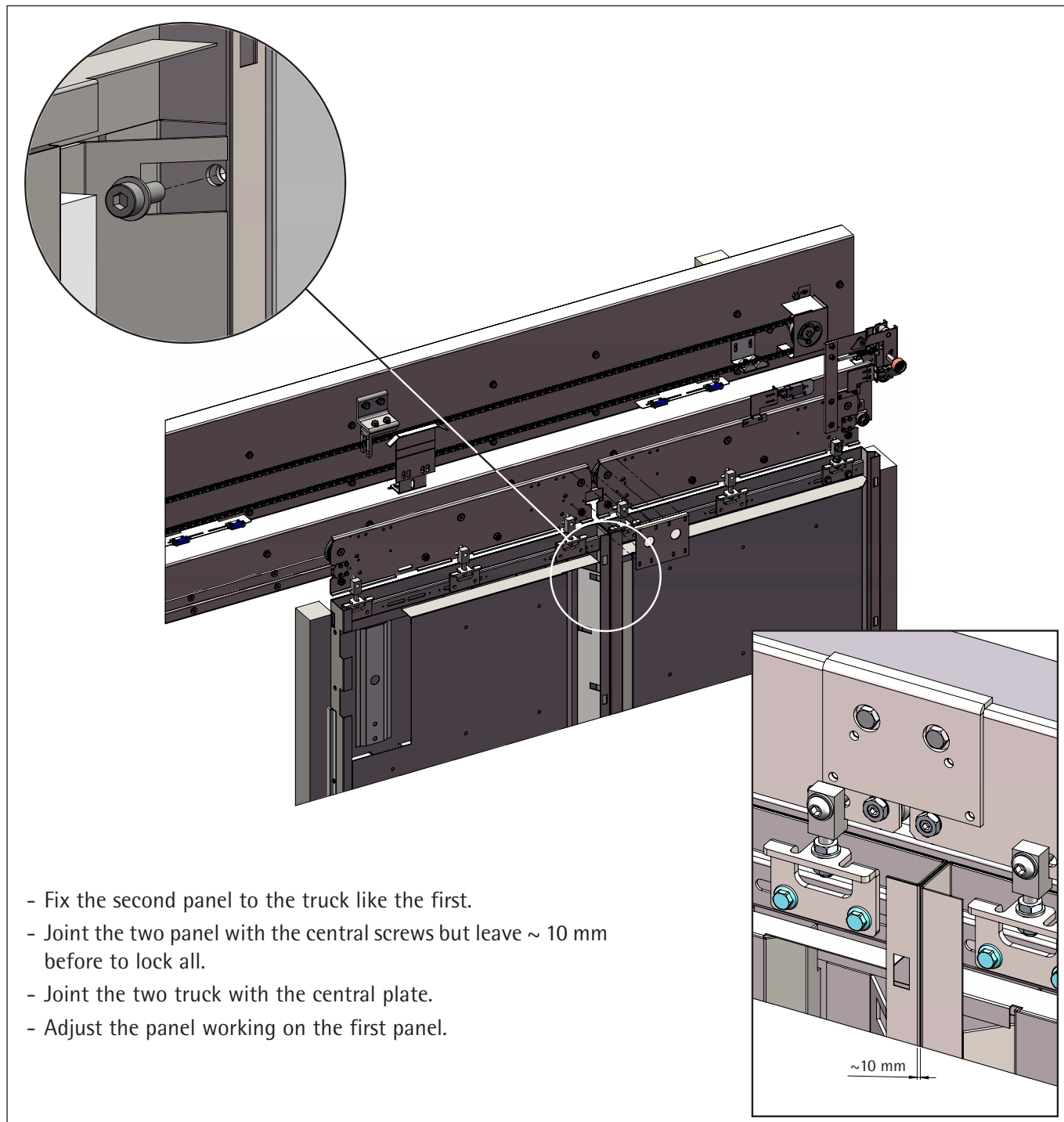
Fix the three brackets to the hanger bolts as shown.

3.6. Disassembly of the truck

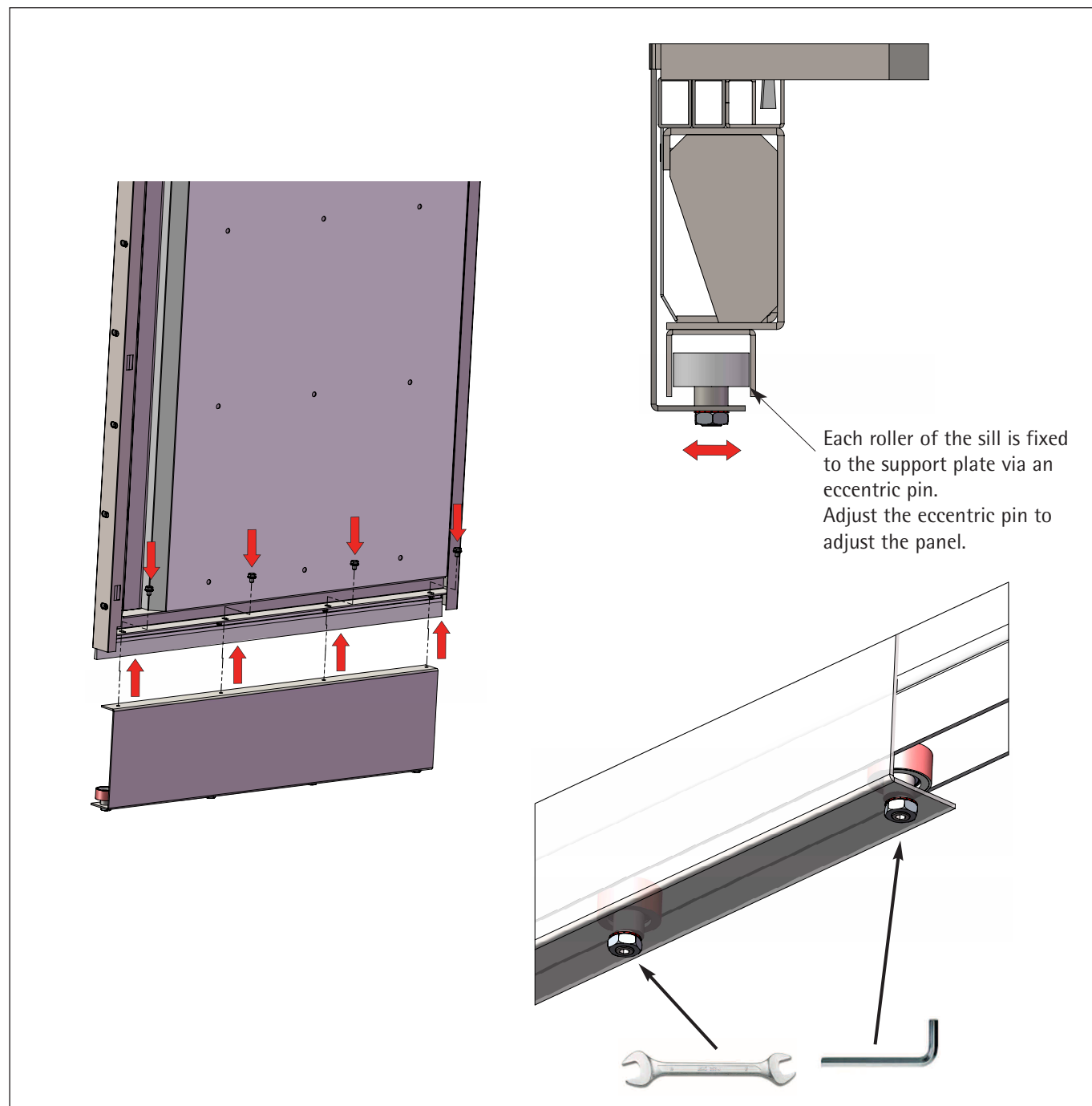


Remove the central plate and divide the trucks.

3.7. Assembly of the other panel

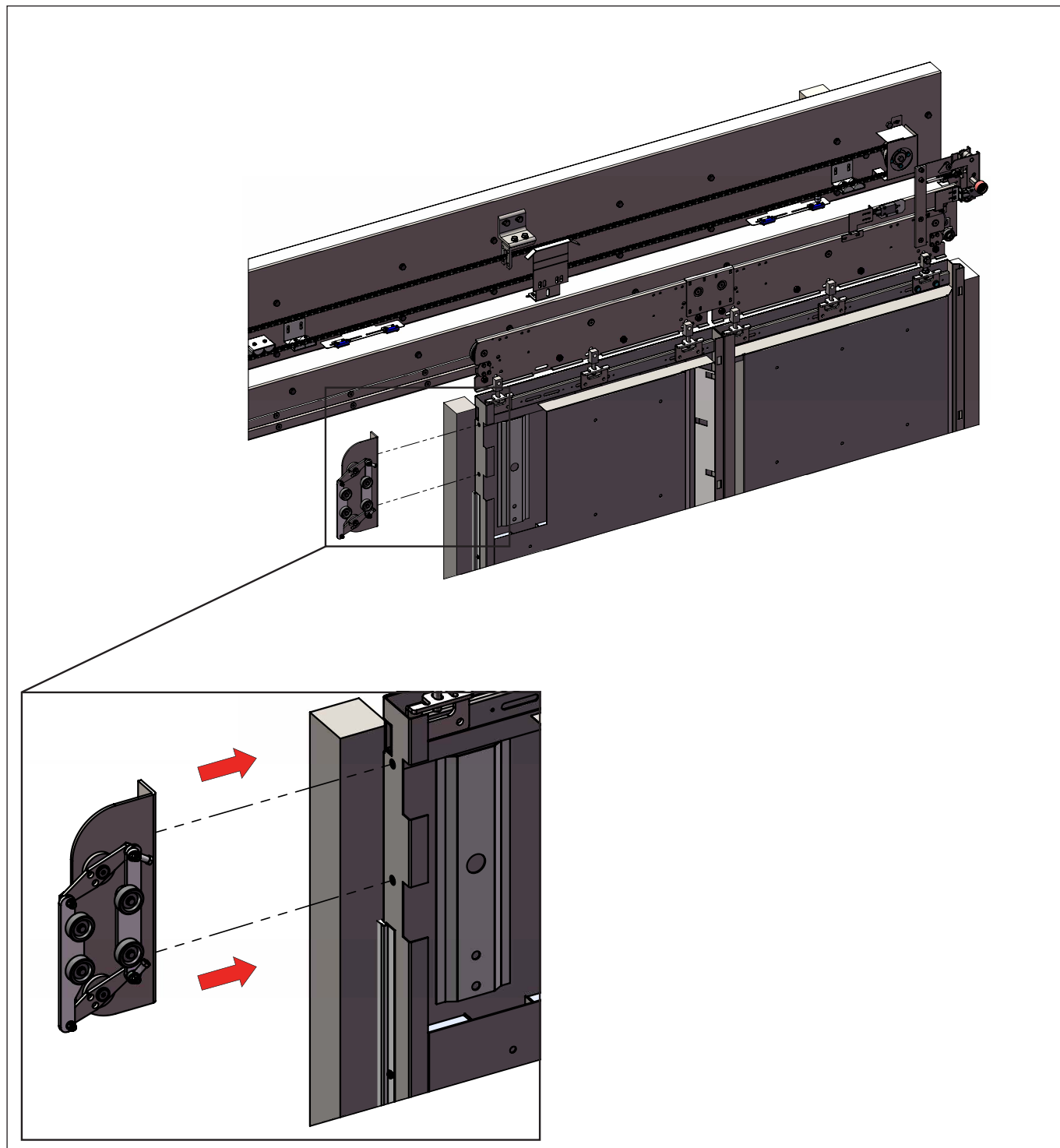


3.8. Lower shoes assembly



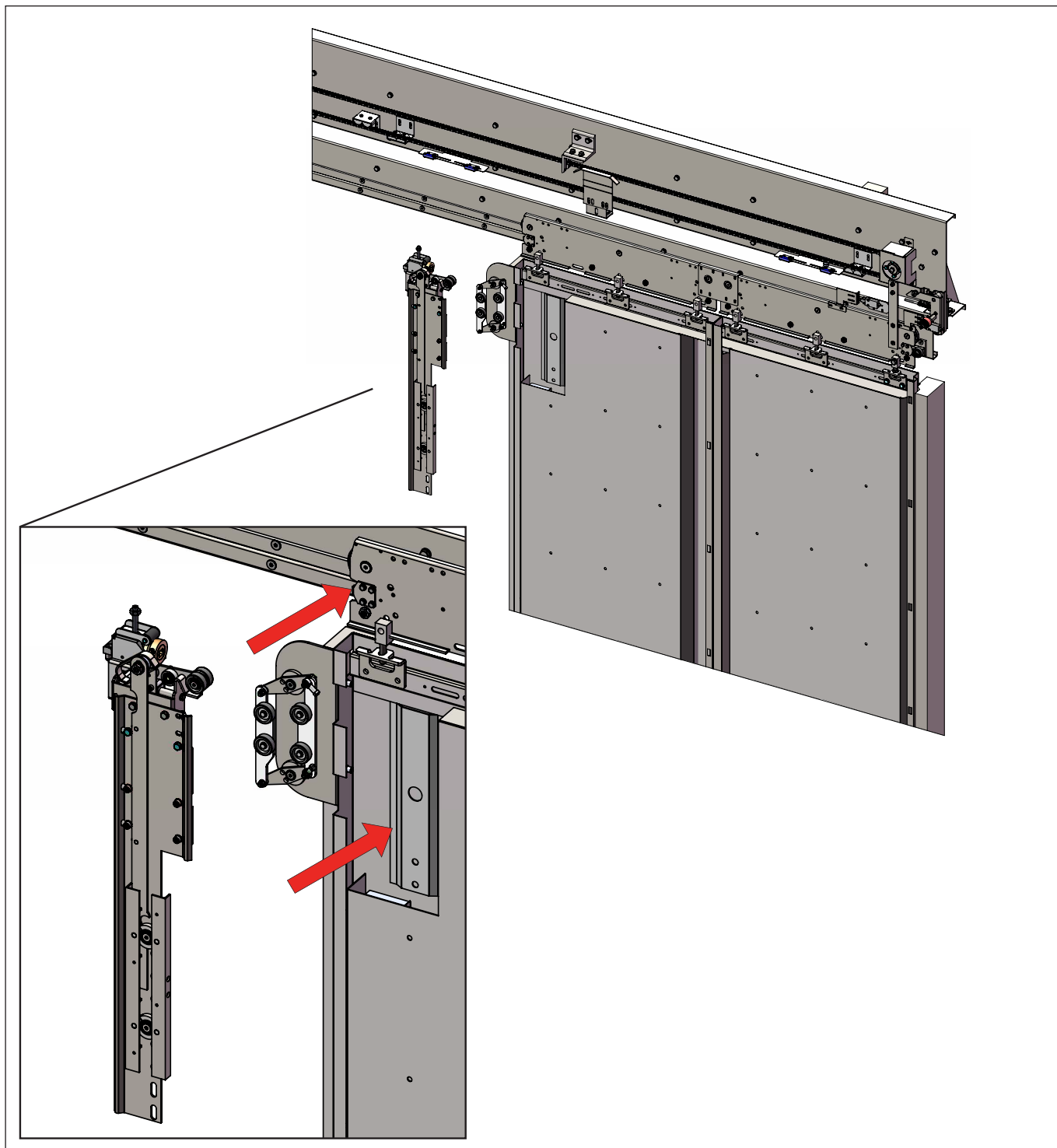
Fix the shoes on the panel and make all the adjustment on it.

3.9. Cam assembly



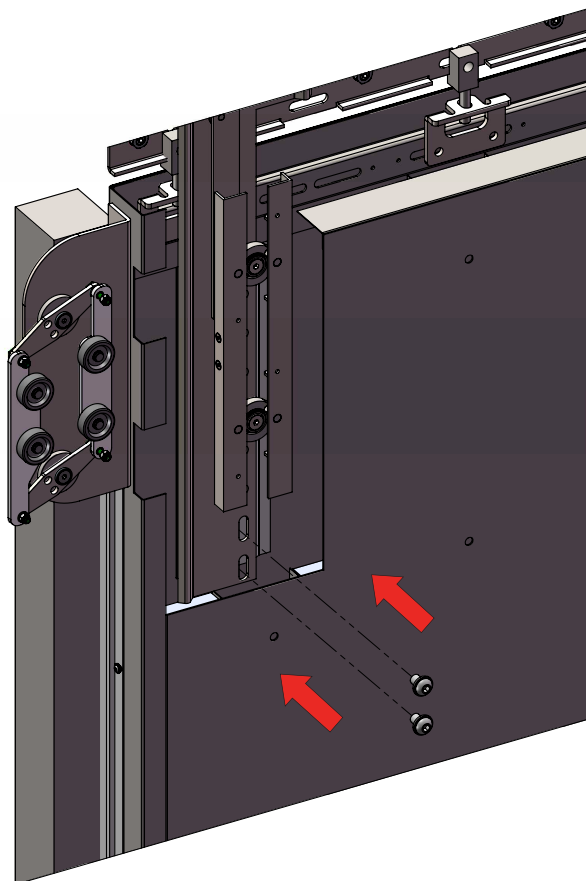
Fix on the side of the panel the cam with the wheels as shown.

3.10. Coupler cam assembly - Part 1



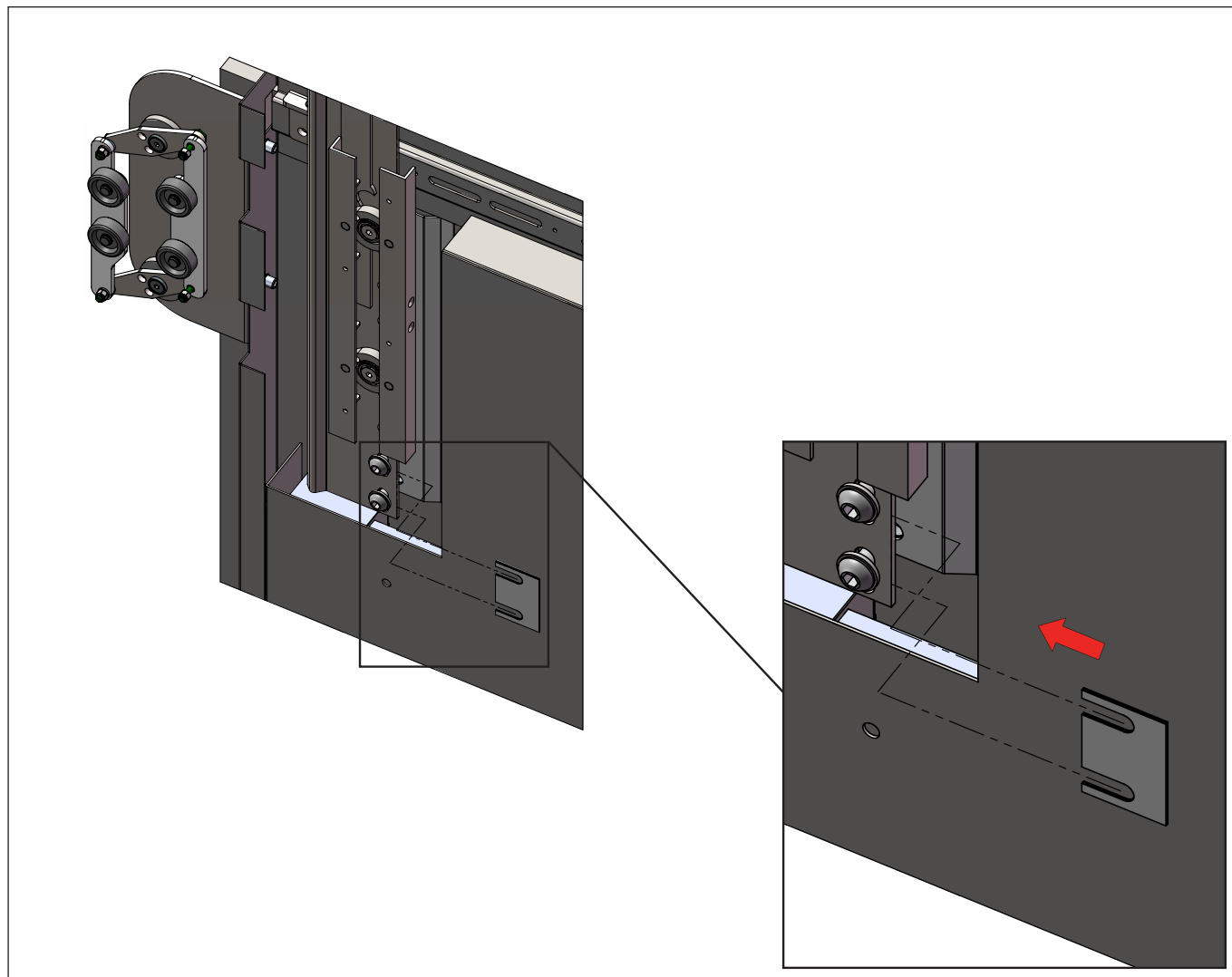
Fix to the truck and to the panel the other cam as shown.

3.11. Coupler cam assembly - Part 2



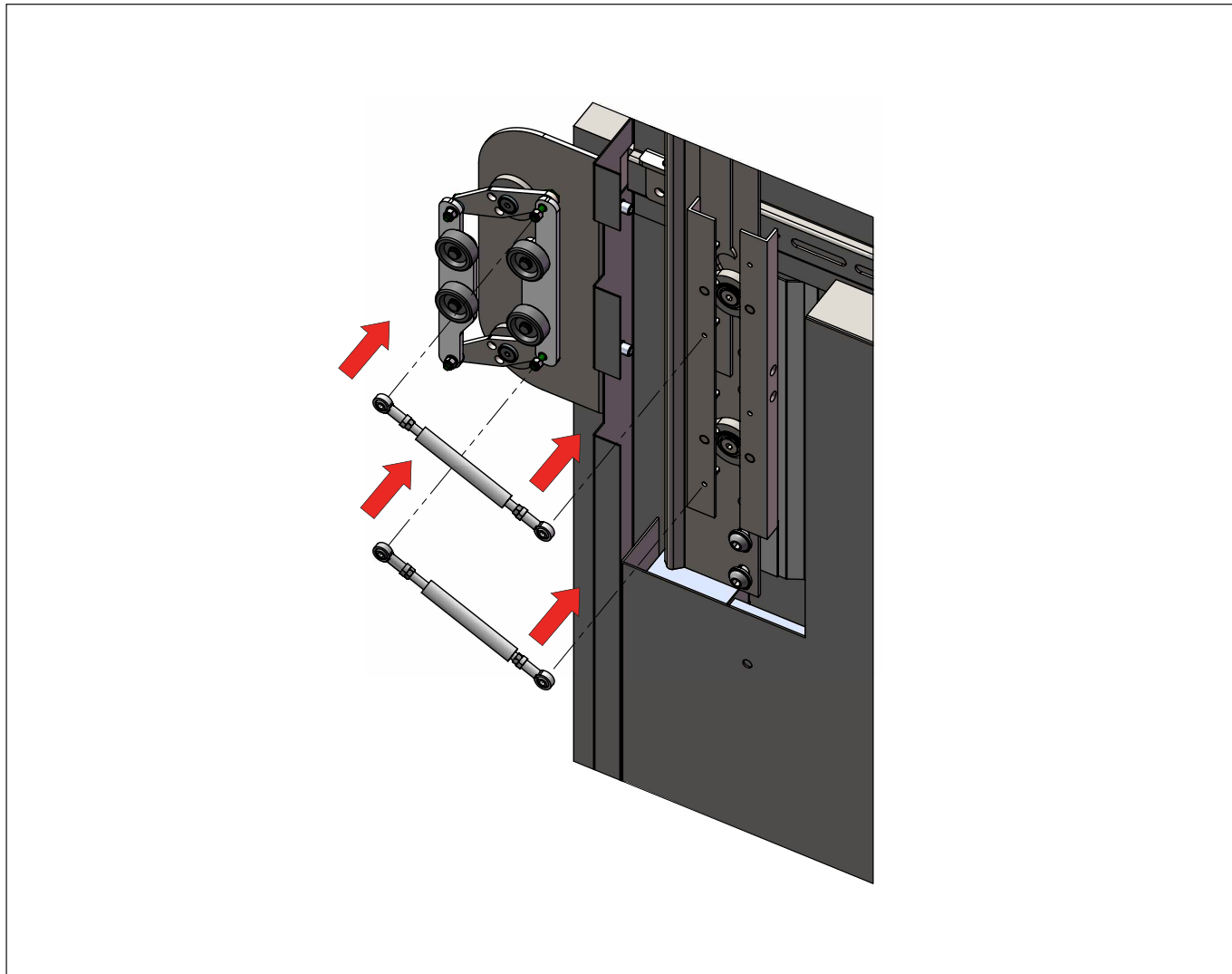
Use the screws, supplied to fix the cam on the panel.

3.12. Coupler cam assembly - Part 3



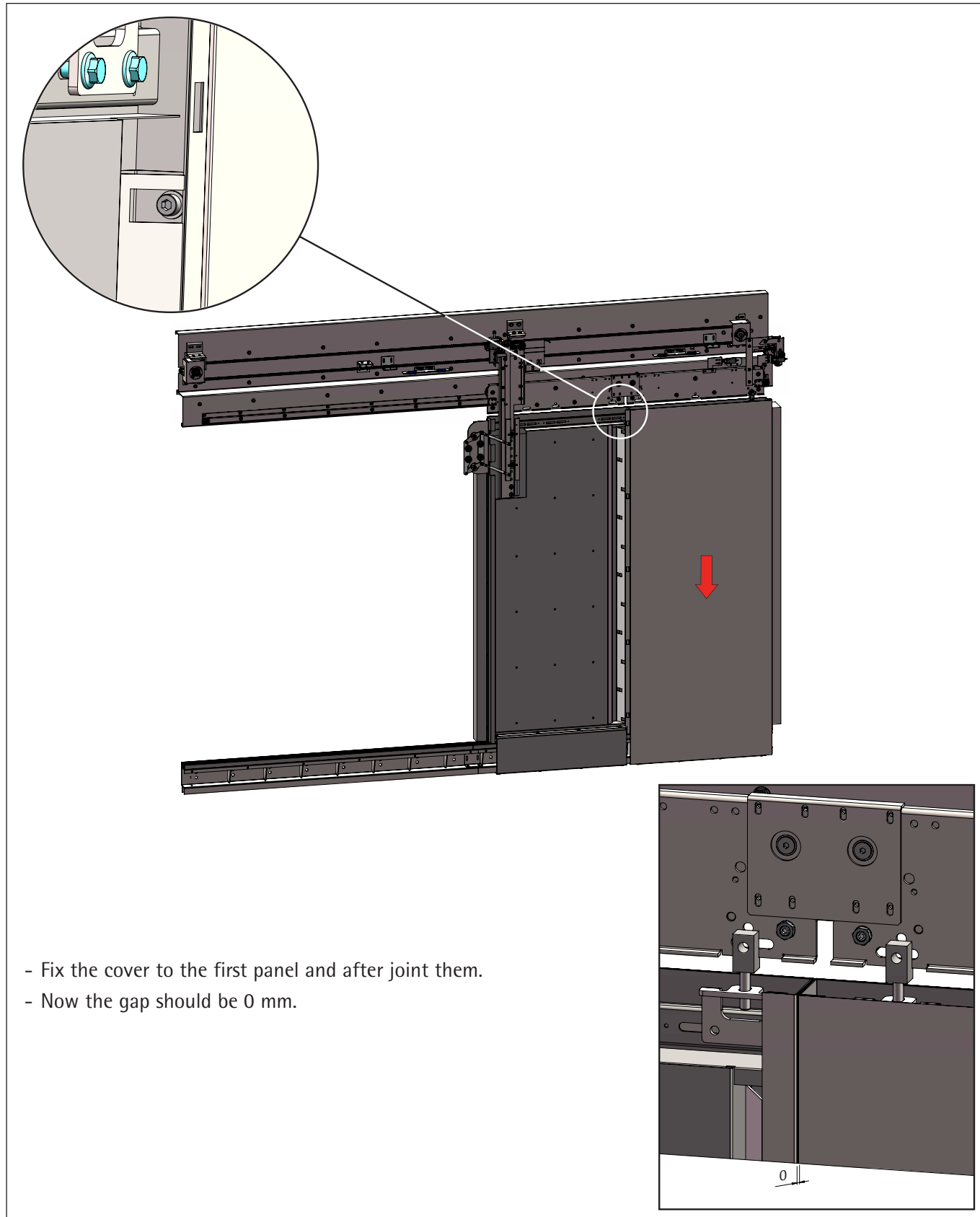
If it's necessary you can use the special spacers to regulate the possible gap from the panel to the coupler came.

3.13. Pivot assembly

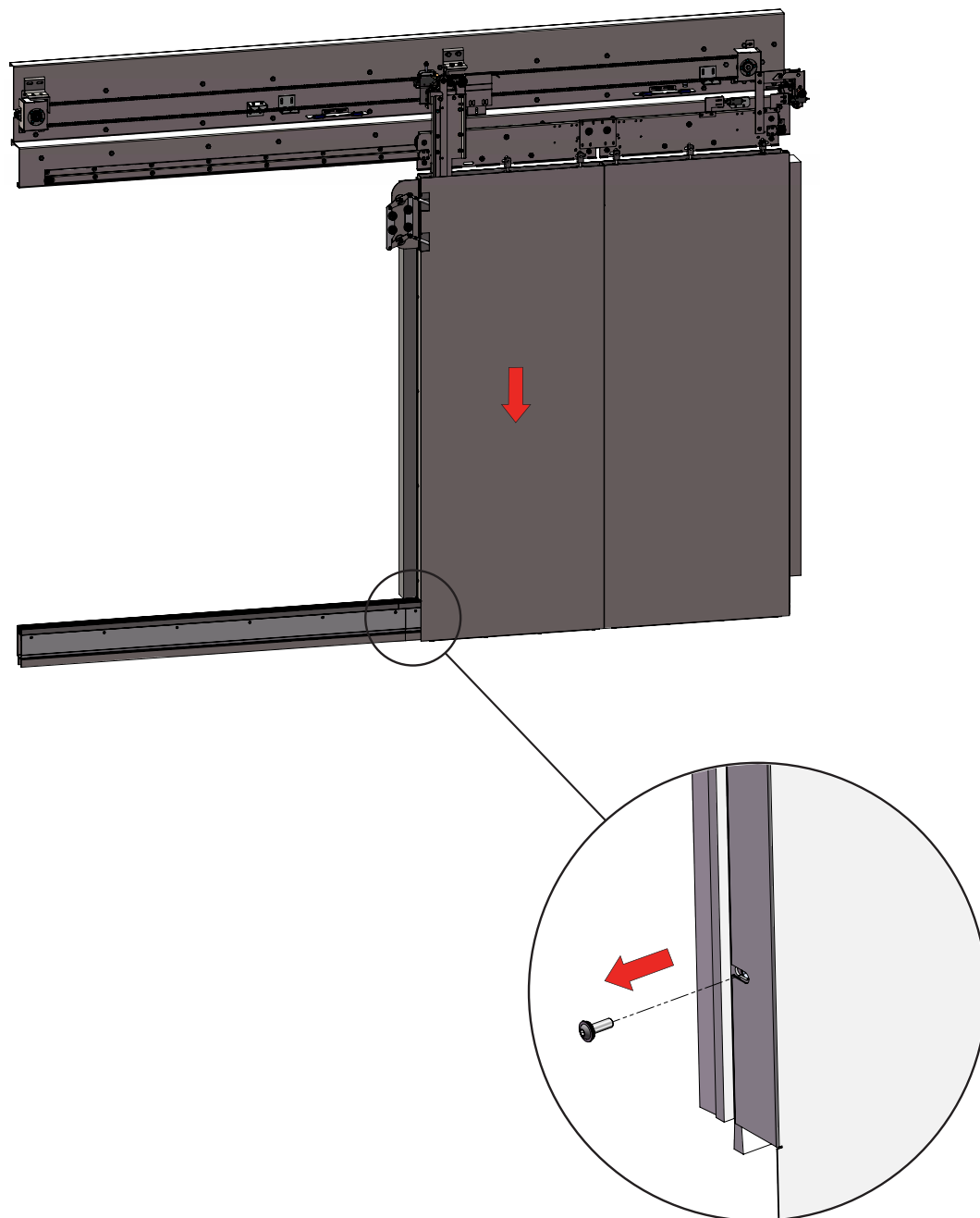


Join the two different cam with the pivot supplied and do the adjustment require.

3.14. Panel cover assembly

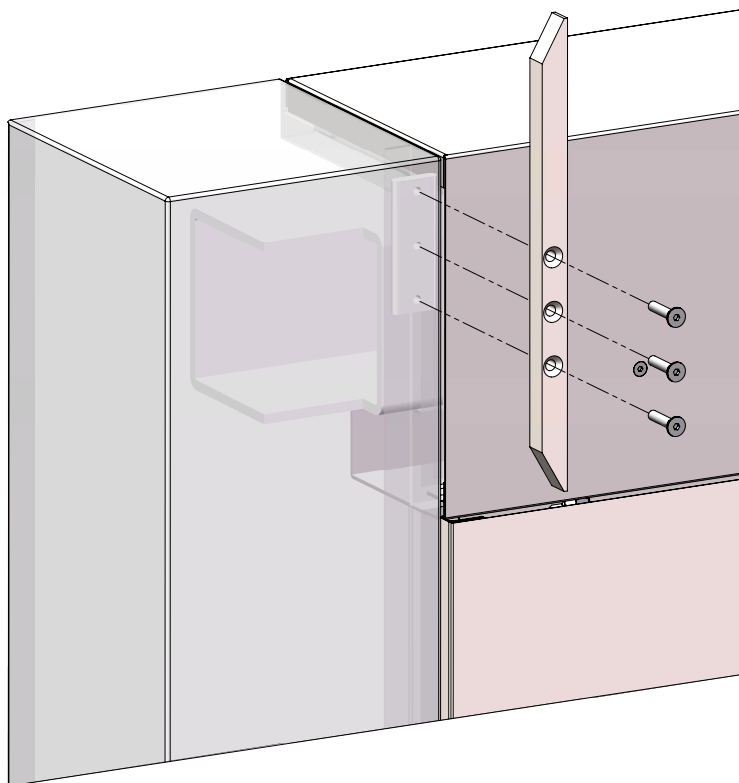


Panel cover assembly



Assembly the cover to the second panel and fix it with the screws on the side.

3.15. Assembly of fix cam



Disassembly the fix cam from the mechanism.

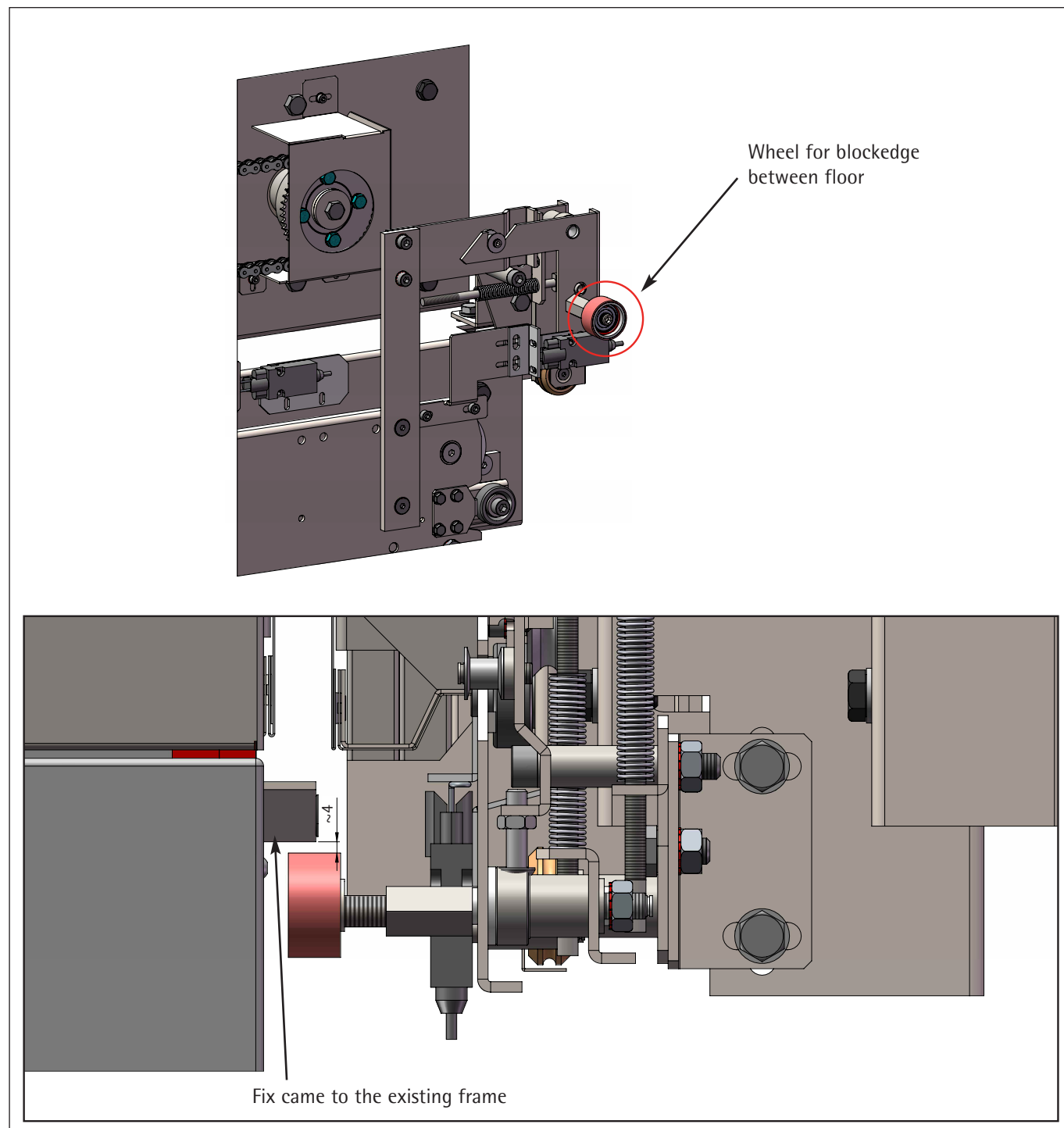
- After all, fix it on the existing frame. As shown.



Pay attention!!

- Fix the fix cam after the car door assembly.

3.16. Blockedge between floor adjustment



You have to do this adjustment before fixing the cam on the existing frame.