

# FINELINE®

COMBINES ADVANTAGES



safety *in* motion™

COMBINES ADVANTAGES

# FINELINE®

The FINELINE® door sets new standards with its compact size and sill dimensions. An innovation in the elevator market >> smart – compact – comfortable. The advantages of FINELINE® door are particularly evident when modernizing an existing elevator with swing doors.

In the past, due to lack of space, most modernization projects included only an automatic car door with swing landing doors. The compact dimensions of FINELINE® allow the installation of both an automatic car door and automatic landing doors also in a second step without losing any space in the lift car.

FINELINE® extremely reduced sill offers the maximum possible car space combined with easy access to the elevator also for reduced mobility people. FINELINE® quality brings high user satisfaction and increased value for the building.



Extremely compact and robust door package – available in two executions (2-panel 85 mm or 4-panel 115 mm).  
Most efficient use of existing shaft space with symmetric and asymmetric 4-panel execution. Modernization with FINELINE® offers additional room in the car for one extra person compared to modernization solutions based on standard automatic doors.



Flexible modernization possibilities: installation of the automatic car door only with existing swing landing doors or complete package modernization including automatic car door and automatic landing doors without reducing the dimensions of the existing lift car.



Compliant with all requirements for people with reduced mobility according to European lift directive EN 81-20/50, EN 81-21, EN 81-80 (SNEL), EN 81-70.  
Safety and comfort increase as well as an increase in the value of the building.

## Dust-free

- No modifications of the existing walls (installation on the existing door frame)
- Smooth and dust-free modernization by using existing swing door frame



## Time advantage

- Very short assembly time
- Fast setting of car door using the clear opening self-learning cycle
- Maintenance work according to check list

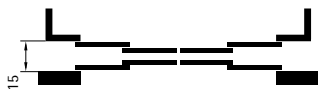
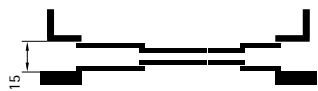
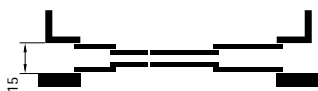




## Quality

- Reliable, long-lasting structure and silent drive technology (ECO+ belt drive)
- Certified according to the Lift Directive and EN 81

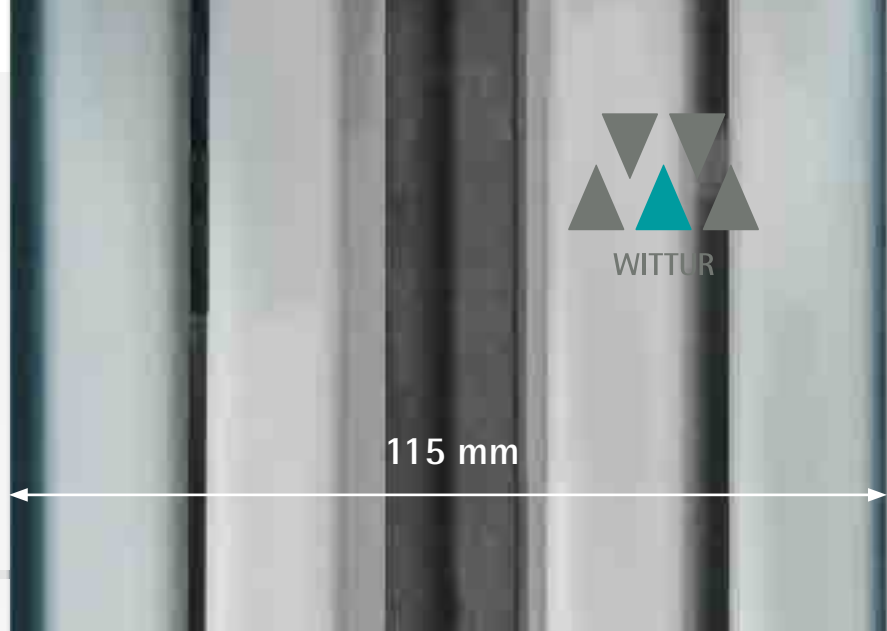


## VERY COMPACT DIMENSIONS

| Type    | Illustration  | C.O. (mm) |     | C.H. (mm) |      | Package width |
|---------|---|-----------|-----|-----------|------|---------------|
|         |   | Min.      | Max | Min.      | Max. |               |
| 4/S     |  | 600       | 900 | 1900      | 2100 | 115           |
| 4/AS-L  |  | 600       | 900 | 1900      | 2100 | 115           |
| 4/AS-R  |  | 600       | 900 | 1900      | 2100 | 115           |
| 01 / 02 |  | 600       | 900 | 1900      | 2100 | 85            |
| 11 / 12 |  | 600       | 900 | 1900      | 2100 | 115           |

## 1 Old elevator system

- High safety risk
- Not barrier-free
- Manual opening needed



## 2 Minimal modernization

- FINELINE® car door installation
- Safety increase
- Not 100% barrier-free – landing swing door



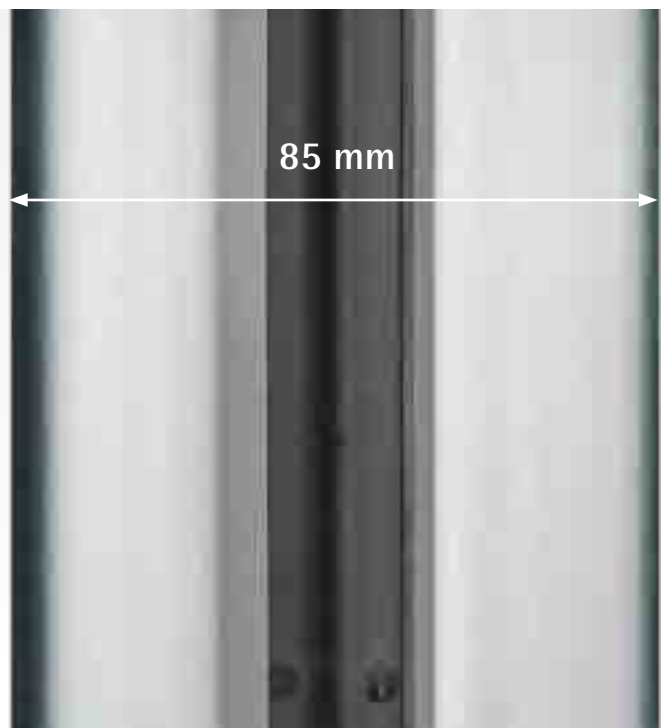
## 3 Ideal refurbishment

- Complete FINELINE® door package
- Minimum space requirement
- Safe and comfortable



85 mm

115 mm

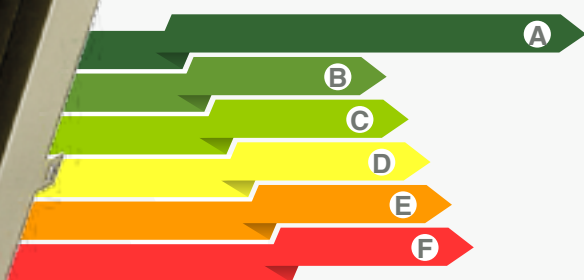






## Safety

The FINELINE® door is also available in fire-rated executions according to EN 81-58 in E90 and EW60.



## Reduced energy consumption

The brushless ECO+ belt drive with closed loop offers reduced energy consumption.

0-watt standby mode without learning cycle.

All electronic components are compliant with the RoHS directives.



## Execution

- Aluminium sill
- Emergency release installed on the door panel
- Execution according to EN 81-58 in E90
- Door frames width 90 x 90 x 90 mm, depth 40 mm
- Wide range of cladding and colors
- Car door lock according to EN 81-20/50



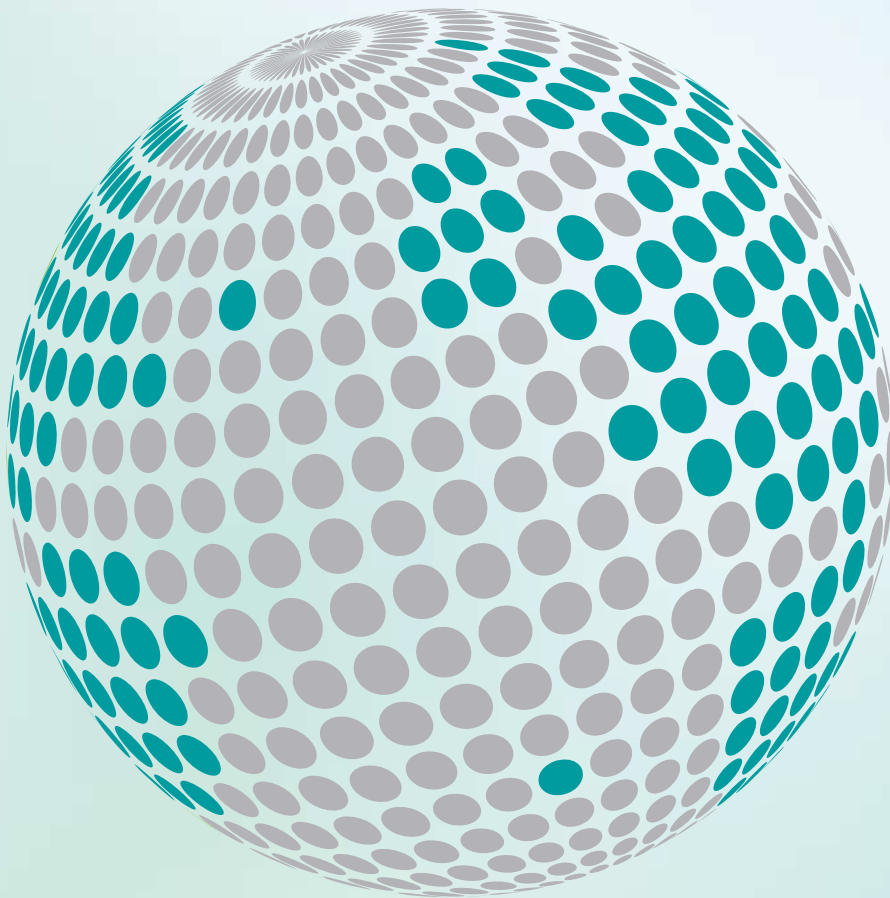
Before modernization



After modernization



YOUR GLOBAL PARTNER FOR COMPONENTS,  
MODULES AND SYSTEMS IN THE ELEVATOR INDUSTRY



*safety* **in** *motion*™

[www.wittur.com](http://www.wittur.com)

More information  
about Wittur Group  
available on-line.

