

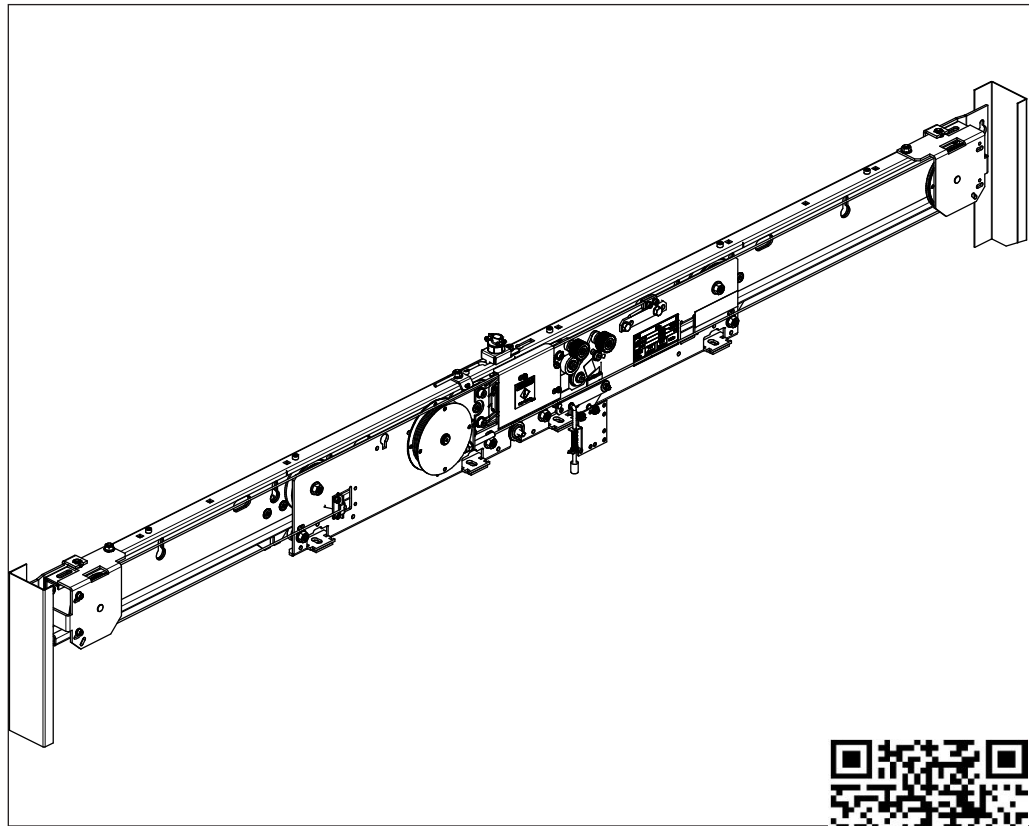
Automatic Doors SGVNA

Code **AM.2.005258.EN**

Version **B**

Date **27.11.2020**

Landing door mechanism



No part of this publication may be reproduced or translated, even in part, without prior written permission from WITTUR.

Product manufacturer reference can be found on the product type label. For any support or further questions please contact your trading office.

info@wittur.com
www.wittur.com

© Copyright WITTUR 2020



Automatic landing door SGV NA

Operating instructions

Code AM.2.005258.EN
Version B
Date 27.11.2020
Page 2.38

Contents	Page
----------	------

1 General information prior to installation

1.1 Description and function.....	3
1.2 Liability and guarantee.....	3
1.3 Safety precautions	3
1.4 Advice for when working on safety components	6
1.5 Related documents	6
1.6 Preparation for operation.....	6
1.7 Delivery.....	6

2 Installation

2.1 Equipment description.....	8
2.2 Installing sill support angle, leveling brackets and floor brackets	10
2.3 Alignment.....	11
2.4 Installing door drive rollers and interlock.....	12
2.5 Attaching wires to interlock.....	14
2.6 Assembling hoistway entrance frame	15
2.7 Plumbing and anchoring entrance frame	16
2.8 Installing hoistway doors.....	17
2.9 Installing hoistway door unlocking device.....	18

3 Alignment

3.1 Adjusting hoistway doors	19
3.2 Door contacts	20
3.3 Lock rollers	21

4 Maintenance, checks and repairs

4.1 Safety	22
4.2 General checks	22
4.3 Lock contacts	23
4.4 Lock rollers	24
4.5 Lock unit.....	25
4.6 Synchronization cable tension	26
4.7 Railing profile	27
4.8 Closing device	27
4.9 Pendant and anti-tip rollers.....	28
4.10 Synchronization cable fixing.....	29
4.11 Changing landing lock rollers	30
4.12 Changing rollers	31

5 Spareparts

5.1 SGVNA 1S, 1 panel side opening.....	32
5.2 SGVNA 2C, 2 panel center opening.....	33
5.3 SGVNA 2T, 2 panel side opening	34
5.4 Profile 2 parts, centre opening.....	35
5.5 Profile 2 parts, side opening	36
5.6 Fast pendant parts	37
5.10 Slow pendant parts	38

Automatic landing door SGV NA

Operating instructions

Code	AM.2.005258.EN
Version	B
Date	27.11.2020
Page	3.38

1 General information prior to installation

1.1 Description and function

SGVNA hatchtracks are used for mid and high duty elevators.

The Railing can carry panel masses up to 275lbf single panel weight and 1320lbf complete door package weight.

1.2 Liability and guarantee

This instruction handbook is written for people who are familiar with lift servicing and installation. Competent knowledge of lifts is essential.

WITTUR accept no responsibility for damage caused by improper handling, or for damage caused as a result of actions other than those stated in these operating instructions.

The WITTUR guarantee may be voided if parts other than those described in these instructions are installed.

Always consider safety first and follow your companies safety and installation procedures.

1.3 Safety precautions

WITTUR machine installation or repair engineers are chiefly responsible for the safe operation of machinery.

It is essential to comply with and keep abreast of all safety rules and legal obligations in order to avoid personal / product damage during installation, maintenance and repair work.

Important safety advice and danger warnings are emphasised with the following symbols:



General danger warning



High danger risk warning (i.e. pinching edge etc.).



Risk of injury from damaged parts (i.e. due to incorrect installation).



Important information sign

These operating instructions belong with the whole installation and must be kept in a safe place at all times (i.e. drive room)

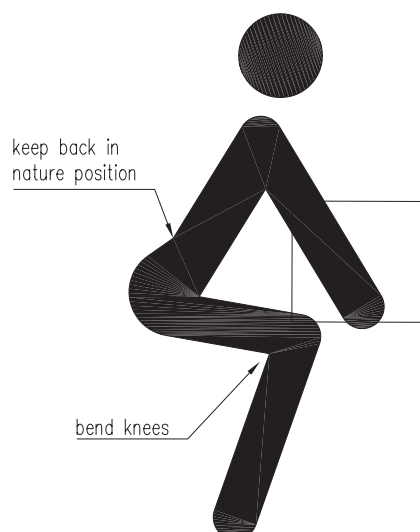
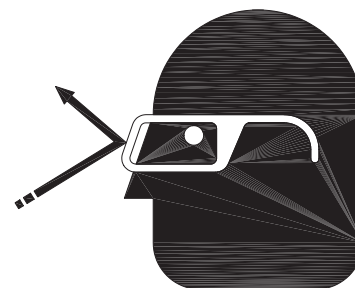
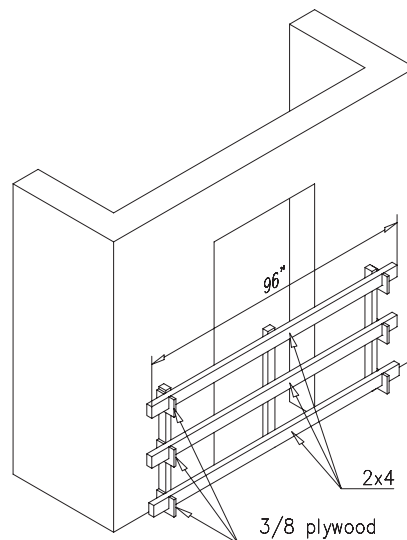
Automatic landing door SGV NA

Operating instructions

Code	AM.2.005258.EN
Version	B
Date	27.11.2020
Page	4.38

Participate in the success of each elevator installation - know the safety hazards related to each phase of elevator installation. Take precautions to prevent accidents from happen-ing to yourself and other people around you. Always consider safety first.

- Install temporary barricades at all wall opening until the hoistway doors and entrances are completely installed. Make certain barricades are in place at all times when openings are unattended.
- Install temporary handrails and toe boards on the running platform.
- Make certain power source is protected with a ground fault circuit interrupter (GFCI) when working with power tools.
- Use proper lifting techniques and hoisting equipment when moving heavy equipment.
- Hoistway must have adequate lighting.
- Always know where other people are before moving or hoisting objects.
- Wear eye protection when cleaning, cutting and welding.
- Have a fire extinguisher conveniently available when cutting with a torch or when welding.
- If step ladders are used, always support step ladder feet.



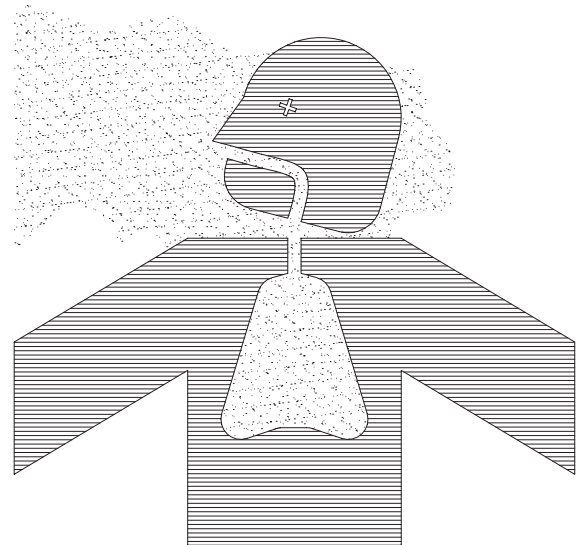
Automatic landing door SGV NA

Operating instructions

Code	AM.2.005258.EN
Version	B
Date	27.11.2020
Page	5.38

Handling door panels containing asbestos
Some older elevator door panels have fire proofing materials that contain asbestos. Care should be taken not to disturb the interior core of this type of door panel. Avoid touching, cutting or drilling into door panels with this type of inside layer, because by penetrating the door skin the encapsulated asbestos fibers may be released. How do I know if what I see is really asbestos? Because asbestos materials were manufactured in different shapes and sizes, only testing can determine if what you see is truly asbestos.

Promptly report potential asbestos materials that you see to your supervisor. The materials that you see may already have been tested. If the materials have not been tested, they could be sample tested. When in doubt, always ask. All old door panels containing asbestos that are being replaced with new door panels should be identified before their disposal. When material containing asbestos is found in door panels, hand and dispose of the door panels in a manner that is approved of by Federal and State authorities.



Automatic landing door SGV NA

Operating instructions

Code	AM.2.005258.EN
Version	B
Date	27.11.2020
Page	6.38

1.4 Advice for when working on safety components

Door interlocks are classified as safety components. It is most important that the standards and guidelines described in this section be complied with as well as those given in the rest of this operating manual.

These instructions, and especially the section on safety precautions, should be read and fully understood before work begins.

Safety devices require special attention. It is compulsory that they function perfectly to ensure danger free installation operation. Safety devices that can only be adjusted after installation should be done so immediately after installation.

Operation of safety devices installed ex-works must be tested immediately.

If it is necessary to disassemble a safety device during servicing or repair, they should be reassembled and comply with the required tests, as soon as the work has been carried out.

1.5 Related documents:

- PM.2.000350.EN Midi/Supra Operating Instruction
- TC.2.005255.EN Technical Catalogue
- AM.2.005257.EN Installation Instruction SGVNA Car door operator

1.6 Preparation for operation

Before installation work begins, it is in your own interests to clarify what structural and spatial conditions are available for installation work, so that you can see which installation procedures should / must be carried out.

Therefore it is recommended that all circumstances be taken into consideration, and to mentally plan the installation sequence before any rash or badly planned work is carried out.

Check the goods or parts for correct and full delivery upon receipt.

Following tools are needed:

- Combination spanners 13mm
- Ratchet + extension; sockets 13mm and 15mm
- Allen keys 4mm, 5mm and 6 mm
- Screw drivers (flat and crossheaded)
- Level
- Measure tape (10 ft)

The hatch track is pre-adjusted at the factory. No other mechanical and electrical adjustments other than mentioned in this instruction are required at site!

1.7 Delivery

Complete preassembled hatch track.

Only to be stored in the original package (plastic wrap). The components must not be unpacked before the installation begins.

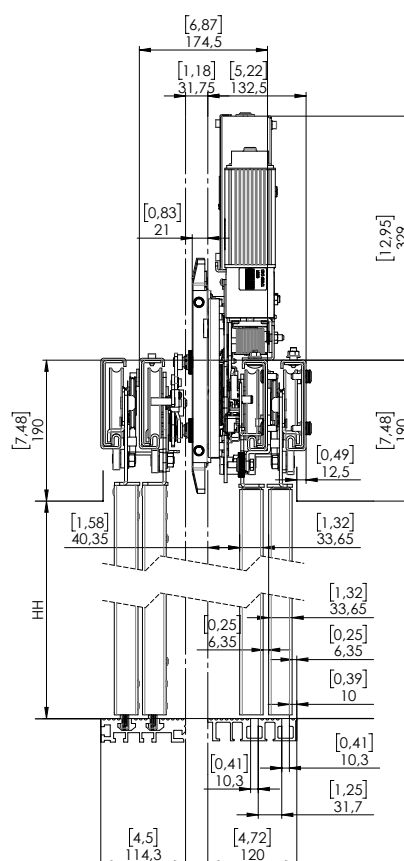
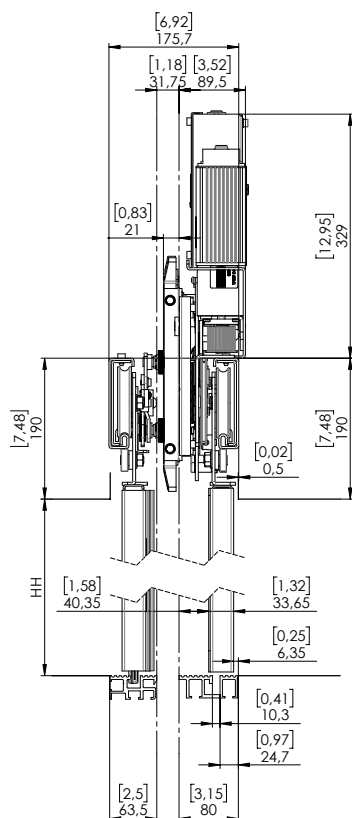
Storage temperature -45...+70°C
Operating temperature -20...+50°C
Humidity range 98% max. 40°C





Automatic landing door SGV NA

Operating instructions

Code AM.2.005258.EN
Version B
Date 27.11.2020
Page 7.38

2 Installation



SILL WIDTH	DOOR TYPE	ILLUSTRATION
2,50 63,5 mm	1S	
2,50" 63,5 mm	2C	
4,50" 114,3 mm	2T	
4,50" 114,3 mm	4C	

Measurements are only valid if operator and toptrack are in standard position. With differences in various components, i.e. panel overlap, panel thickness, ..., the dimensions have to be adapted accordingly.

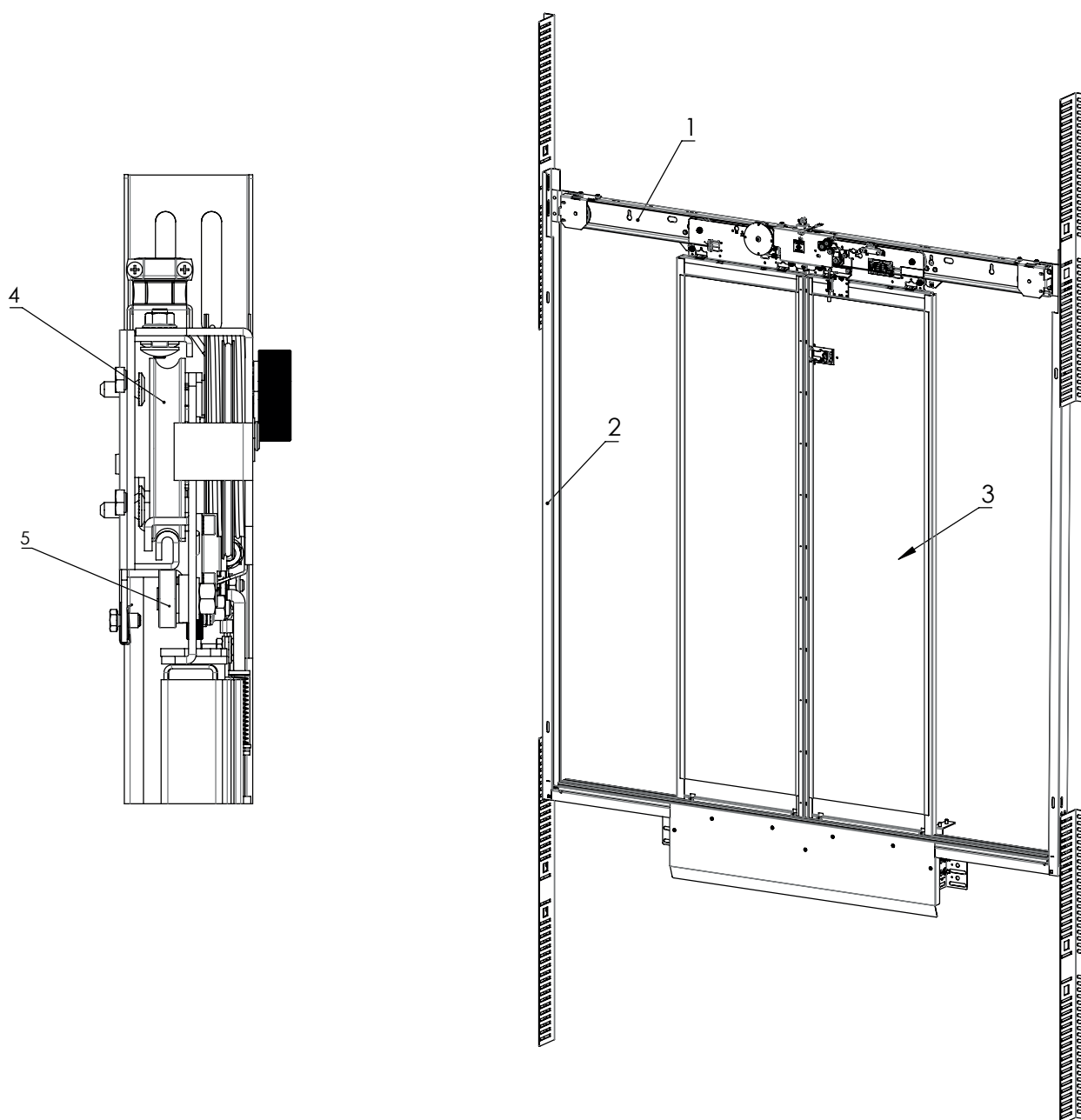
Automatic landing door SGV NA

Operating instructions

Code	AM.2.005258.EN
Version	B
Date	27.11.2020
Page	8.38

2.1 Equipment description

The hoistway header, door pendant, and door track are manufactured as an integral assembly (1). The header is mounted on top of the struts (2), return jambs are assembled to the head jamb, and the head jamb is mounted to the integral header assembly. Hoistway doors (3) height is set and leveled by adjusting eccentric mounted sheave (4) and eccentric upthrust assembly (5) with a 4 mm allen wrench.



Automatic landing door SGV NA

Operating instructions

Code AM.2.005258.EN
Version B
Date 27.11.2020
Page 9.38

Step	Action
1.	If not factory installed, install sill support mounting brackets (12) inside sill support angel (11) with four drive studs and nuts (23). Make sure flat head of drive stud is against hoist-way wall.
2.	If not factory installed, install jamb-mounting brackets (13) on sill (10) with two square head bolts (24) and nuts.
3.	If not factory installed, install stud-bolts, washers and nuts (26) in jamb mounting brackets (13).
4.	Move jamb mounting brackets (13) until distance between stud bolts (26) is "door opening + 2 inches [51.0 mm]".
5.	Position sill angle and brackets in hoist-way entrance. - Set jamb bracket (13) at finished floor height. - Use bolts (23) to adjust sill support-mounting bracket (12) to sub-floor-height.
6.	Secure sill support mounting bracket (12) to floor with anchor bolts (7).

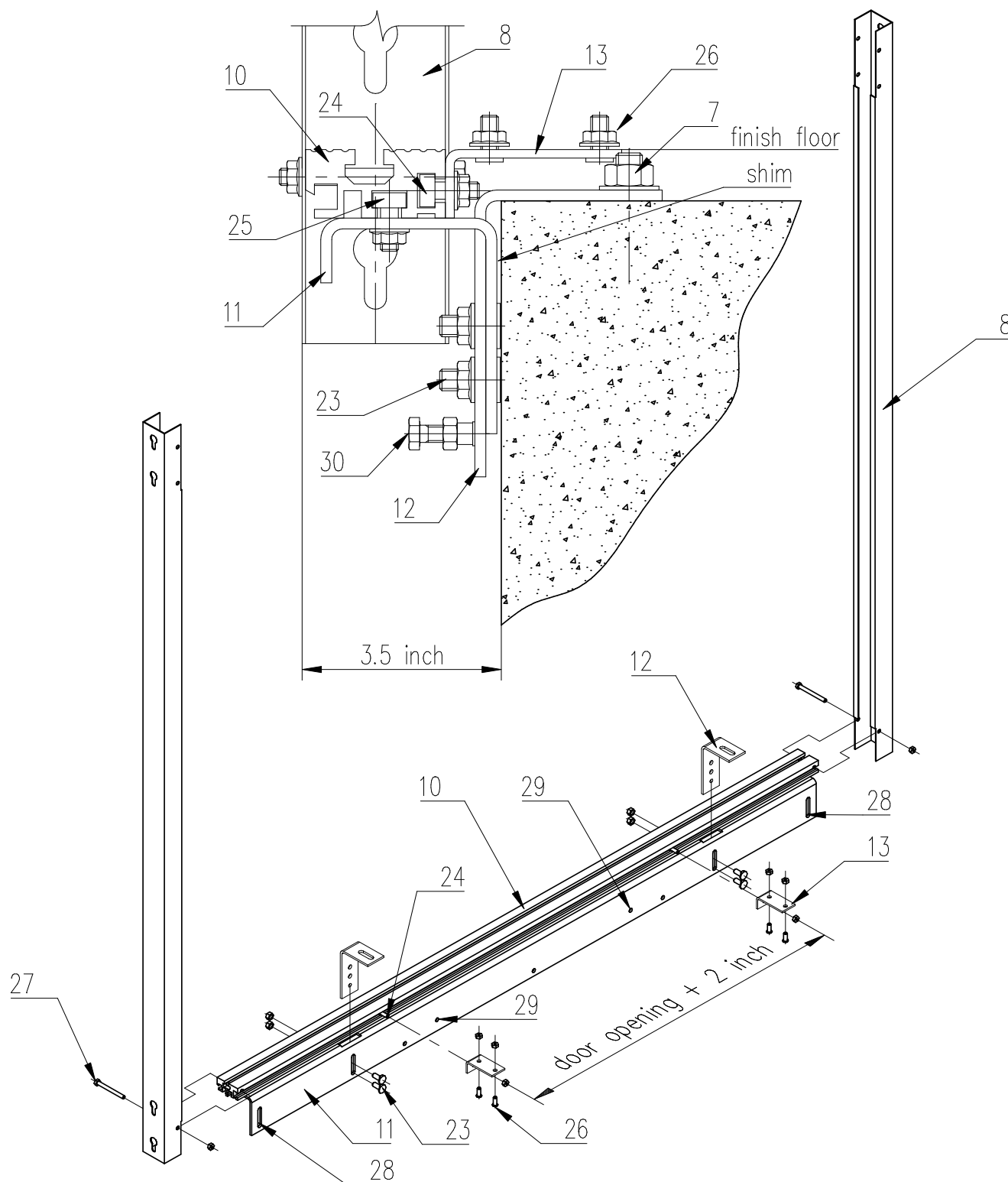
Step	Action
7.	Secure sill support angle (11), as close as possible, to hoistway wall with 1/2inch anchors through slotted holes (28). Finish sill dimension is 3 1/2 inches[89.0 mm] for side-opening and center-opening entrances. Use ONLY slotted holes (28) and furnished 1/2 inch anchors for leveling silland establishing finish floor height.
8.	Level sill and establish finish floor-height with slotted holes (28) on sill angle support (11).
9.	Plumb sill front-to-back with jack bolts (30), or use shims near the top of sill support angle (11).
10.	Secure sill angle support (11) to hoist-way with 1/2 inch anchors throughholes (29).
11.	If necessary, adjust sill in or out with-bolts (25). Maintain minimum of 1-1/4 inch[31.8 mm] running clearance to car sill. In special cases, entire sill angle (11) may require shimming.
12.	Install struts (8) on sill (10) with boltsand "Whiz-lock" nuts (27). Install boltsfrom hoistway side.

Automatic landing door SGV NA

Operating instructions

Code AM.2.005258.EN
Version B
Date 27.11.2020
Page 10.38

2.2 Installing sill support angle, leveling brackets and floor brackets



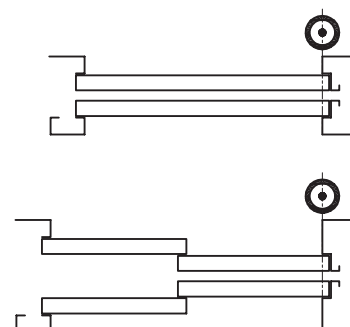
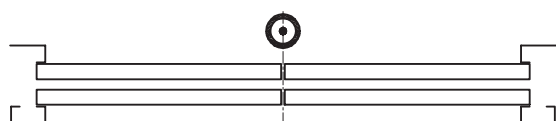
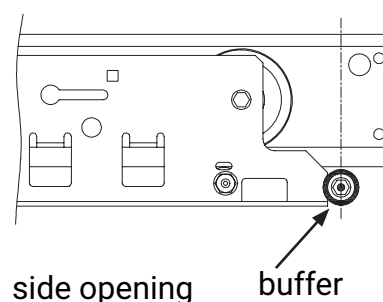
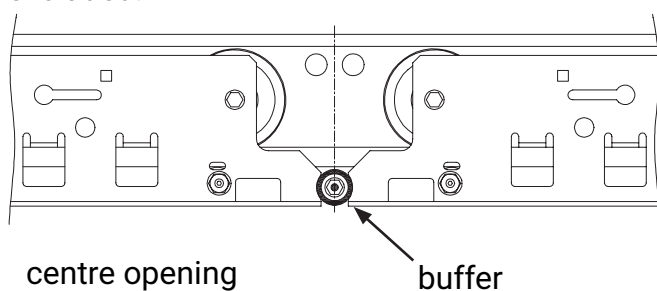
Automatic landing door SGV NA

Operating instructions

Code	AM.2.005258.EN
Version	B
Date	27.11.2020
Page	11.38

2.3 Alignment

The black rubber buffer at the bottom of the Railing is the horizontal reference for the position of all car and landing doors. While for centre opening doors the buffer indicates the door center line, for side opening doors it indicates the clear opening (slam post line), runby excluded.



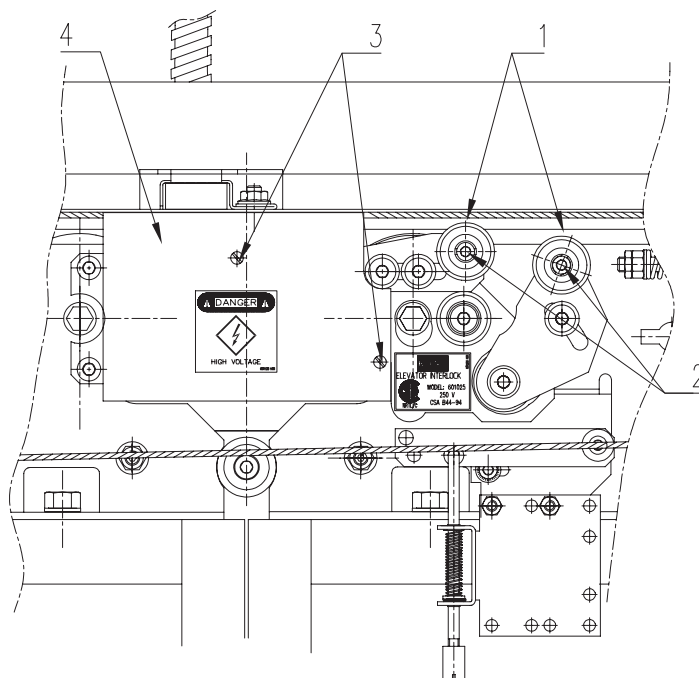
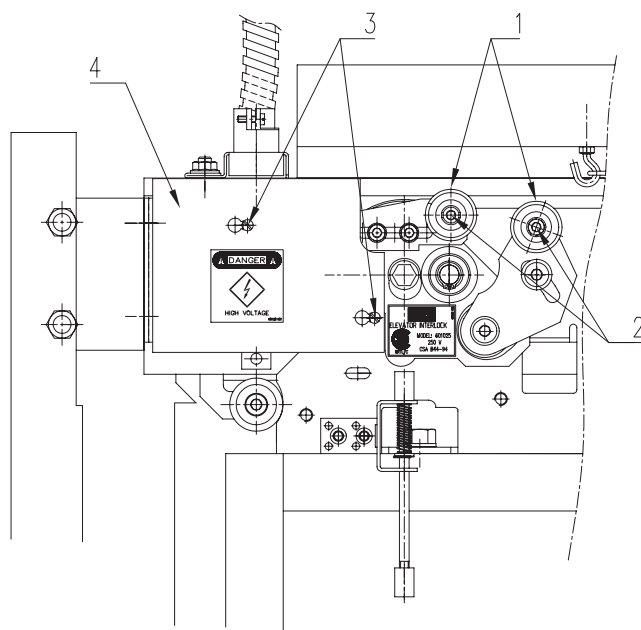
Automatic landing door SGV NA

Operating instructions

Code AM.2.005258.EN
Version B
Date 27.11.2020
Page 12.38

2.4 Installing door drive rollers and interlock

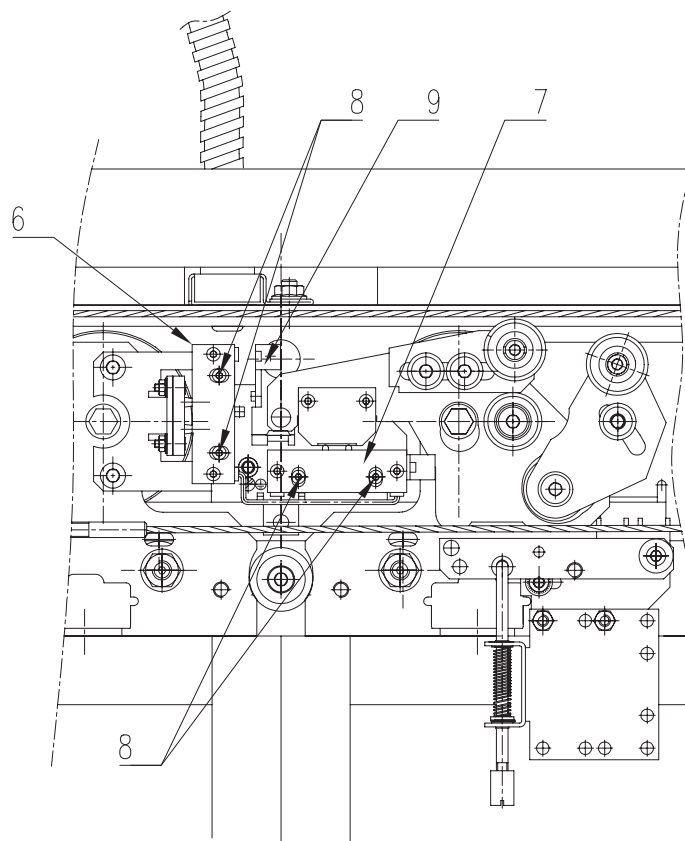
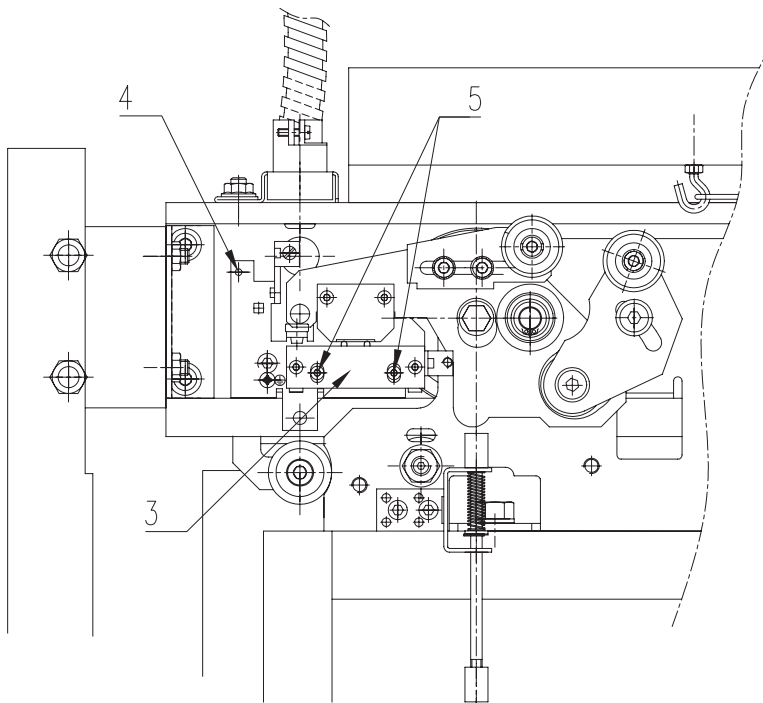
Step	Action
1.	Install door drive rollers (1) on shafts, until rollers bottom out on shafts.
2.	Tighten hardware (2) in center of shafts to secure door drive rollers (1). Final position of door drive rollers is determined after clutch is installed.
3.	Loosen screws (3) and remove cover (4) from header.
4.	Cut tie-wrap around interlock(s).
5.	Side-opening. Install interlock (5) on bracket (6) with screws (7).
6.	Center-opening. Install interlocks (8) (9) on bracket (10) with screws (11).



Automatic landing door SGV NA

Operating instructions

Code	AM.2.005258.EN
Version	B
Date	27.11.2020
Page	13.38



Automatic landing door SGV NA

Operating instructions

Code AM.2.005258.EN
Version B
Date 27.11.2020
Page 14.38

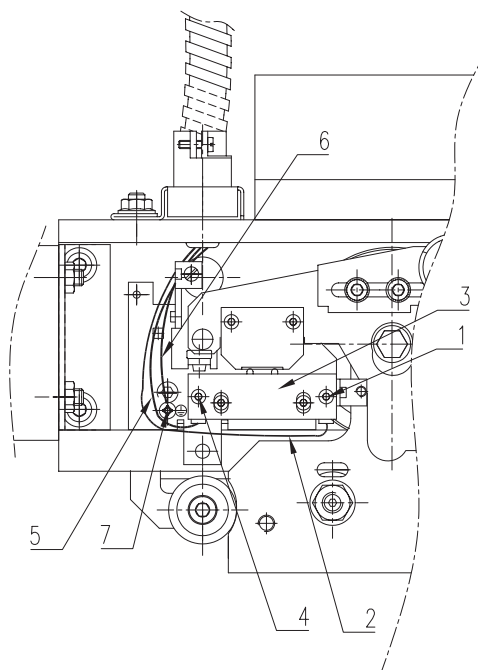
2.5 Attaching wires to interlock

Attach wires to interlock while header is on floor.

NOTE: Do not overtighten interlock screws. Interlock is made of plastic material.

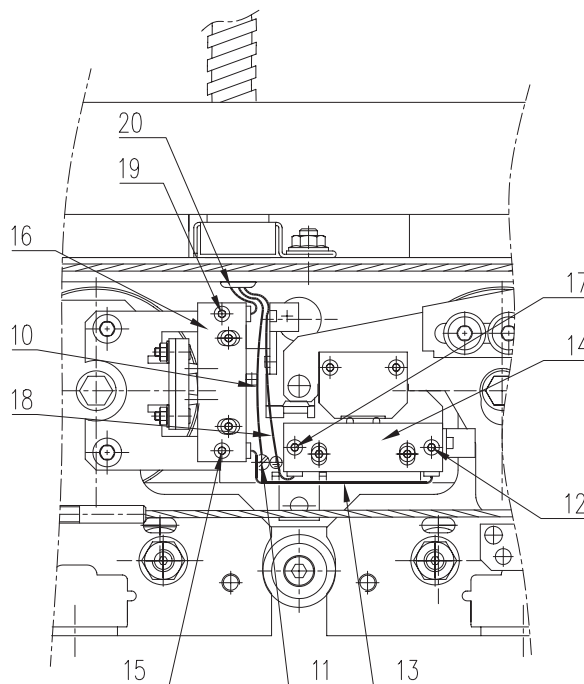
ATTACH WIRES TO INTERLOCK: SIDE-OPENING

Step	Action
1.	Loosen screw (1) and install a red wire (2) in interlock (3). Tighten screw (1).
2.	Loosen screw (4) and install other red wire (5) in interlock (3). Tighten screw (4).
3.	Install green wire (6) under ground screw (7). Interlock cover is installed AFTER adjusting hoistway doors.



ATTACH WIRES TO INTERLOCK: CENTER-OPENING

Step	Action
1.	Install green ground wire (10) under screw (11).
2.	Loosen screw (12) and install one end of red jumper wire (13) in interlock (14). Tighten screw (12).
3.	Loosen screw (15) and install other end of red jumper wire (13) in interlock (16). Tighten screw (15).
4.	Loosen screw (17) and install a red wire (18) in interlock (14). Tighten screw (17).
5.	Loosen screw (19) and install other red wire (20) in interlock (16). Tighten screw (19). Interlock cover is installed AFTER adjusting hoistway doors.



Automatic landing door SGV NA

Operating instructions

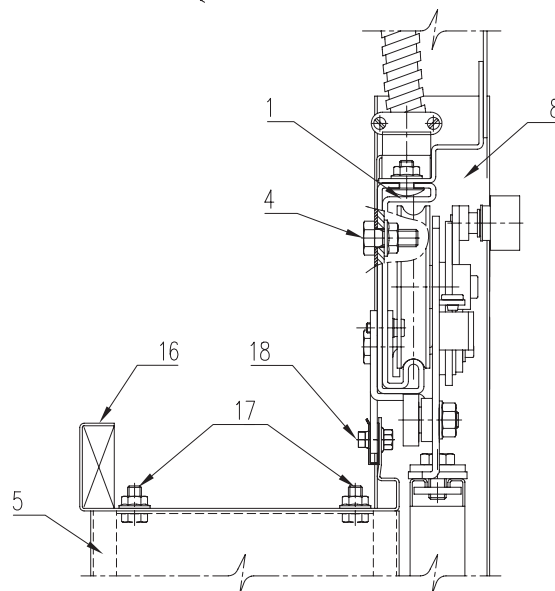
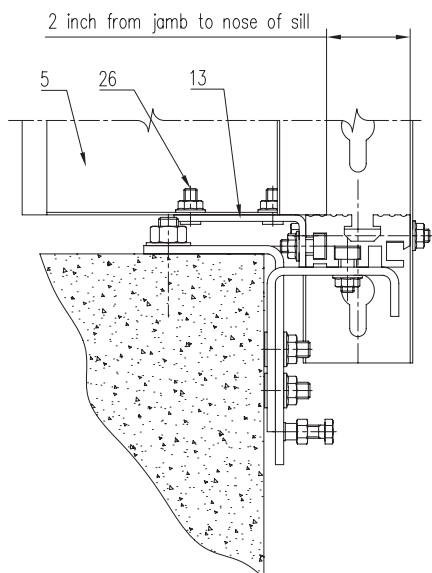
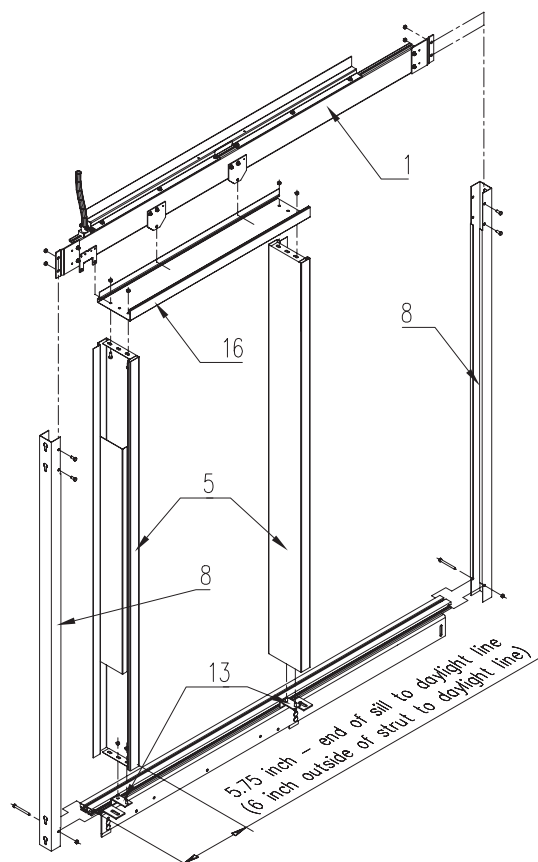
Code AM.2.005258.EN
Version B
Date 27.11.2020
Page 15.38

2.7 Assembling hoistway entrance frame

The entrance frame HEADER is integral with the DOOR HANGER, including pendants, interlock, and cable.

NOTE: Use care when handling assembled jambs to prevent bending angles between head and return jambs.

Step	Action
1.	Install header (1) on top of struts (8) with "Whiz-lock" bolts and nuts (4).
2.	Level and plumb entrance assembly.
3.	Assemble return jambs (5) and head jamb (16) with "whiz-lock" bolts and nuts (17).
4.	Install assembled jambs in hoistway opening and secure to header (1) with bolts (18)
5.	Secure assembled jambs to jamb mounting bracket (13) with drive studs and nuts (26).
6.	Assembled jambs are self locating at header (1), but require adjustment at bottom using slots in jamb ends (5). Adjust jamb ends (5) until distance from edge of sill to jamb is 2 inches [50.8mm].
7.	Check door opening size and frames for level and plumb. Adjust if necessary.



Automatic landing door SGV NA

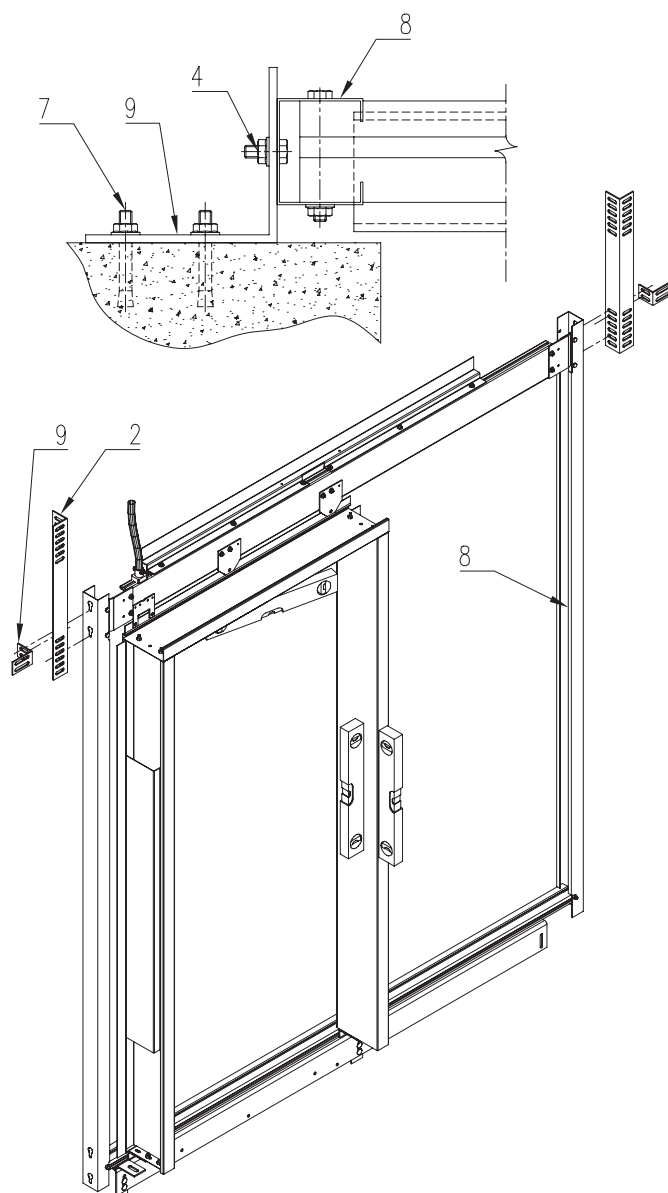
Operating instructions

Code AM.2.005258.EN
Version B
Date 27.11.2020
Page 16.38

2.8 Plumbing and anchoring entrance frame

Step	Action
1.	Level and plumb entrance assembly in both directions.
2.	Install strut extensions (2) on struts (8) using Whiz-lock bolts (4). - Strut extensions vary in height, depending on floor to floor rise. - Depending on available space, strut extensions can be installed in several different arrangements.
3.	Install strut brackets (9) to struts (8) with bolts and nuts (4).
4.	Secure strut brackets to building structure with anchors (7) or welding.

When floor to floor height exceeds 12'0" [3658.0 mm], install additional strut brackets (9) on strut extensions (2). Anchor to building structure as required.



Automatic landing door SGV NA

Operating instructions

Code AM.2.005258.EN
Version B
Date 27.11.2020
Page 17.38

2.9 Installing Hoistway Doors

INSTALL HOISTWAY DOORS

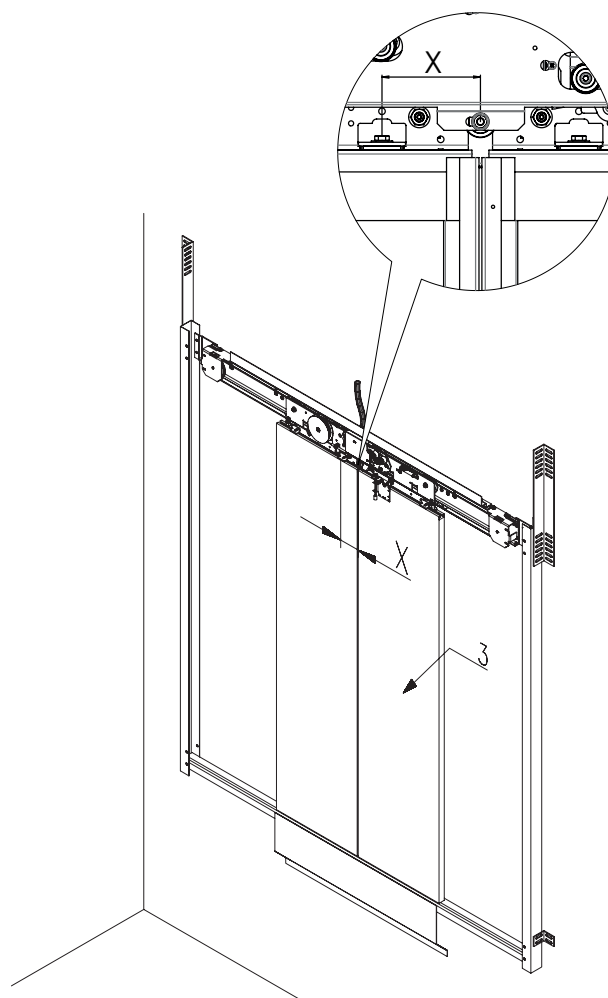
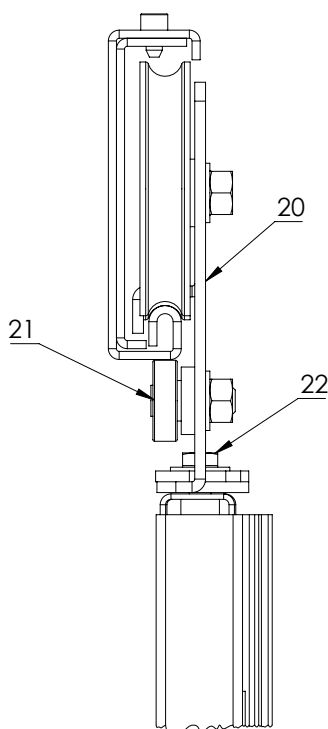
Pendant hardware is metric.

Step	Action
1.	Adjust door eccentric (21) to allow plenty of clearance to door pendant-track.
2.	Lift doors (3) in place, and use 3/8 inch[9.5 mm] running clearance.
3.	Install doors (3) on door pendants (20) with bolts (22).
4.	Set lead edge of door at "X" from center of first door pendant bolt.
5.	Set running clearance to desired dimension and tighten.

X

SGVNA 1S, 2C = 4" [101.6mm]
SGVNA 2T, 4C = 4.75" [120.5mm]

Dimension X is only a starting point. Doors may require additional adjustment.



Automatic landing door SGV NA

Operating instructions

Code AM.2.005258.EN
Version B
Date 27.11.2020
Page 18.38

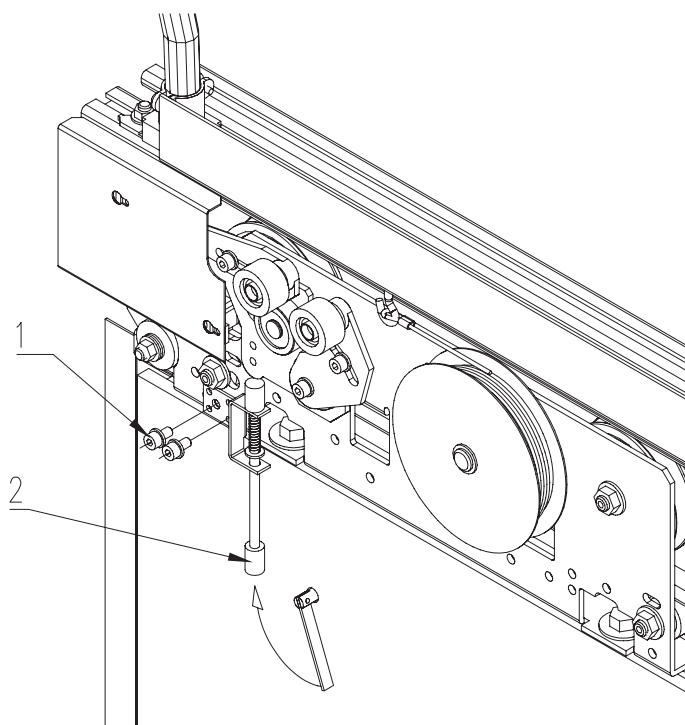
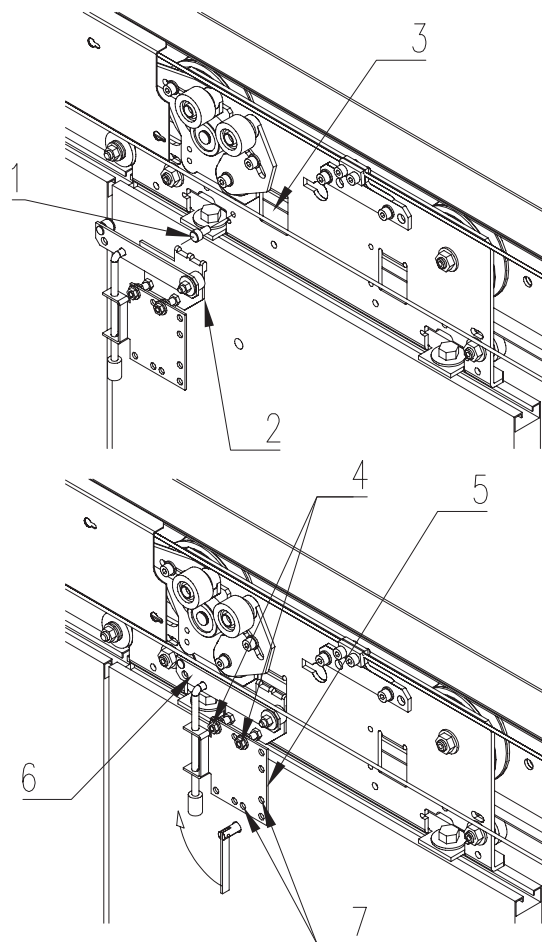
2.10 Installing hoistway door unlocking device

Step Action (door type 1S, 2C)

1. Install locating tab (2) in pendant opening (3) and fasten it with screw (1) to pendant.
2. Loosen nuts (4) until plate (5) is FLAT against back of door panel. Tighten nuts (4).
3. Raise lever (6) and install socket head cap screw in unlocking device slot and door pendant.
4. Secure unlocking device to hoistway door panel with screws (7).
5. Move lever (6) up and down, to verify proper operation.

Step Action (door type 2)

1. Install unlocking device to pendant and fasten it with screws (1).
2. Move lever (2) up and down, to verify proper operation.



When using door key to unlock door from hallway, ALWAYS turn door key towards leading edge of door.

Automatic landing door SGV NA

Operating instructions

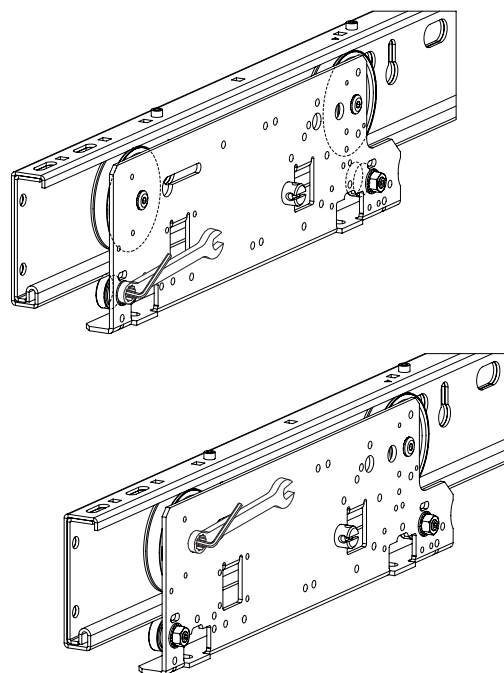
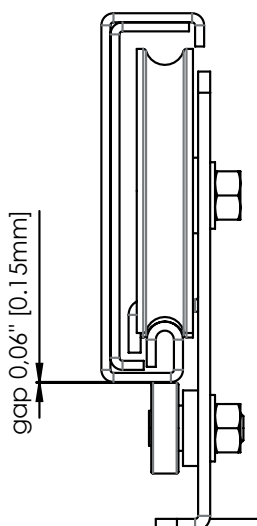
Code AM.2.005258.EN
Version B
Date 27.11.2020
Page 19.38

3 Adjustment

3.1 Adjusting hoistway doors

Step	Action
1.	Verify pendants are plumb. Shim as necessary, between pendant and top of door. It is crucial to verify door pendants are plumb. If door pendants are not plumb, pendant mounted clutch will not engage pick-up rollers.
2.	Level, raise and lower hoistway doors by adjusting eccentric mounted sheave (19) and eccentric upthrust assembly (21) with a 4 mm allen wrench.
3.	After making all adjustments, set eccentric upthrust assembly (21) with a 4 mm allen wrench.
4.	Verify gap in interlock assembly is approximately 1/8 inch [3.2 mm].
5.	Install door gibs (27) and fire retainer gib on bottom door. Bend fire tabs on door gibs.

Step	Action
6	Position fire retainer (10) at predrilled holes on inside trailing edge of hoistway door (11). Secure fire retainer with hardware provided. Hoistway doors over 7 feet [2134.0mm] in height use two fire retainers.
7	If interlock contact requires adjustment, move door panel (3) on door bar (31). Interlock cannot be repositioned on header.
8	Install interlock cover (32) and tighten screws (33).
9	Check that there is a space of 0.15 mm between roller and rail.
10	The outer pendant roller has also eccentric adjustment, to get the panel correct in, line with the frame.



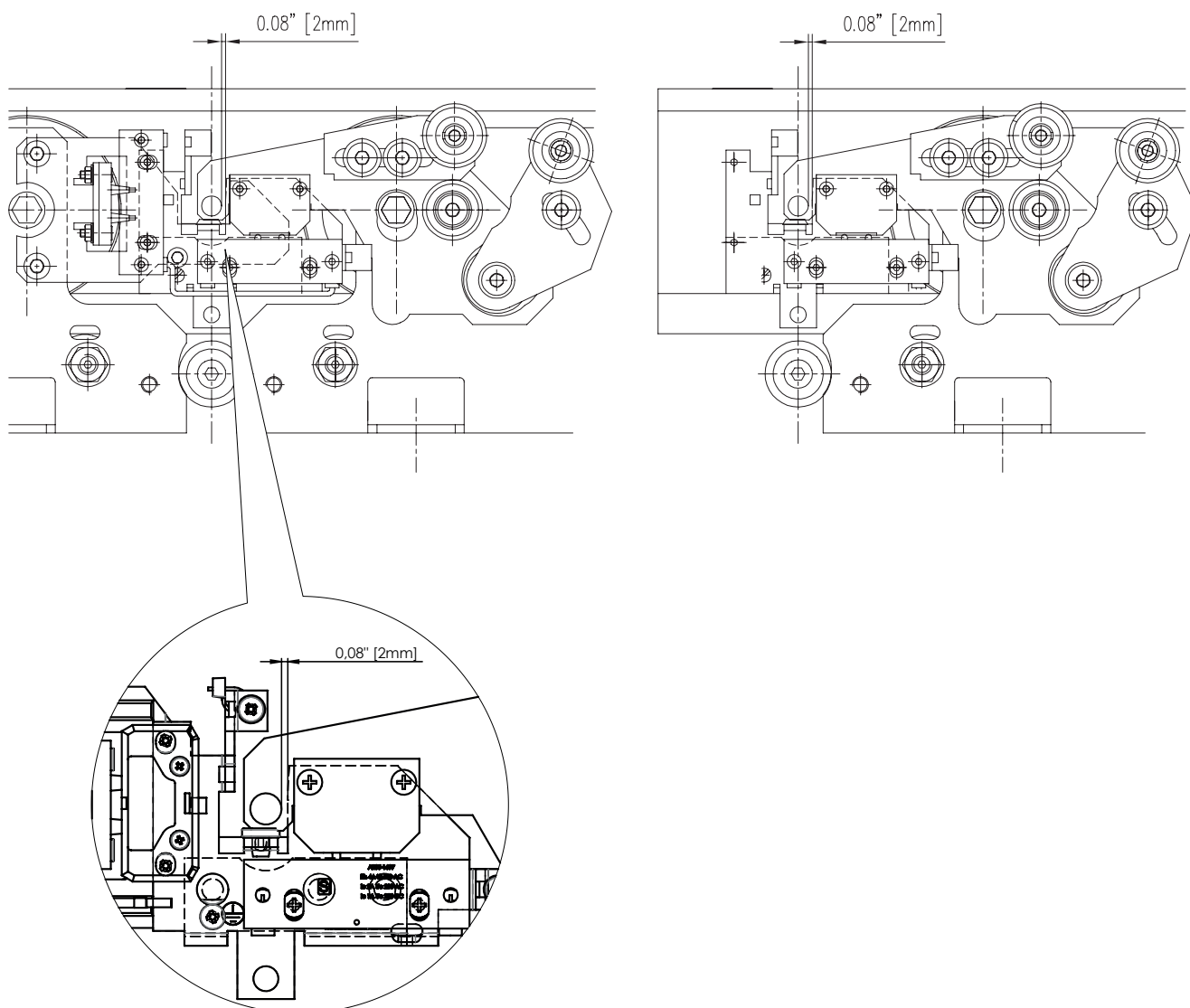
Automatic landing door SGV NA

Operating instructions

Code AM.2.005258.EN
Version B
Date 27.11.2020
Page 20.38

3.2 Door contacts

Step	Action
1.	Check the proper function of the door contacts.
2.	The lock hook beak must rest on the lock hook buffer inclosed position.
3.	The lock gap should be 0.06" - 0.08" [1-2mm] when the pendants are fully closed and leans against the end buffer.



Automatic landing door SGV NA

Operating instructions

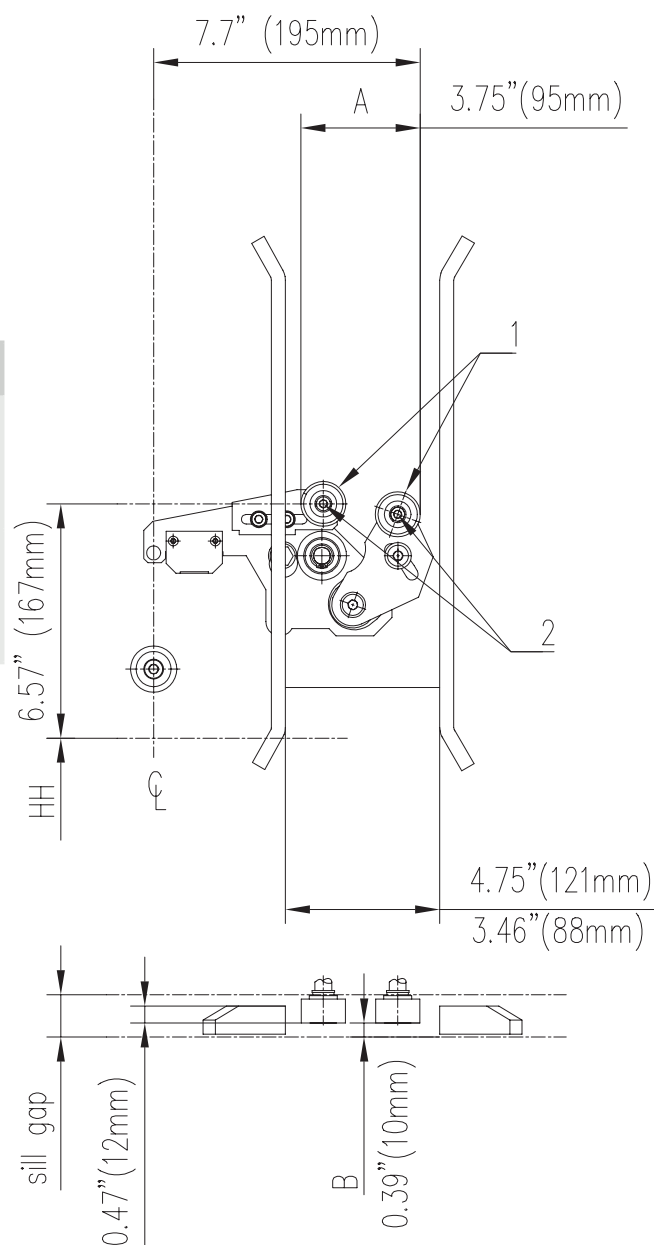
Code AM.2.005258.EN
Version B
Date 27.11.2020
Page 21.38

3.3 Lock rollers

Adjusting pick-up rollers

Dimension "A" between pick-up rollers in relaxed position, is preset at factory

Step	Action
1.	AFTER clutch is installed, make sure there is clearance "B" between front of pick-up rollers (1) and edge of platform.
2.	If adjustment is necessary, loosen set-screws (2) and adjust pick-up rollers in or out.



Automatic landing door SGV NA

Operating instructions

Code AM.2.005258.EN
Version B
Date 27.11.2020
Page 22.38

4 Maintenance, checks and repairs

4.1 Safety

Follow all the safety rules and instructions concerning general working with elevator.

Be especially aware of open landing doors.

Always ensure that open landing doors cause no danger to outsiders.

Landing doors must be closed if the car is not at the landing.

Ensure also that the door safety circuits are operative at all times, also during maintenance.

When opening car door by door test drive buttons, look down in shaft to ensure that lower landing door does not open.

4.2 General checks

Step	Action
1.	Drive the elevator from floor to another like a normal user and check the door operation also from the landing side.
2.	Check the operator from the topmost landing.
3.	Check all landing doors from car roof
4.	The whole door should operate smoothly and should not rattle during drive.
5.	When the door is closing the panels should not bump against each other or against the slam post.
6.	In open position the panels should be correctly aligned with the back post.
7.	Photocell, closing force limiter and curtain of light must stop or reverse the door action when operated.

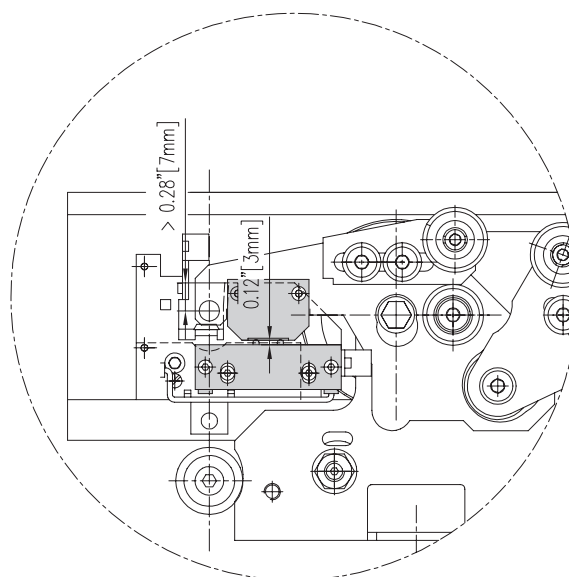
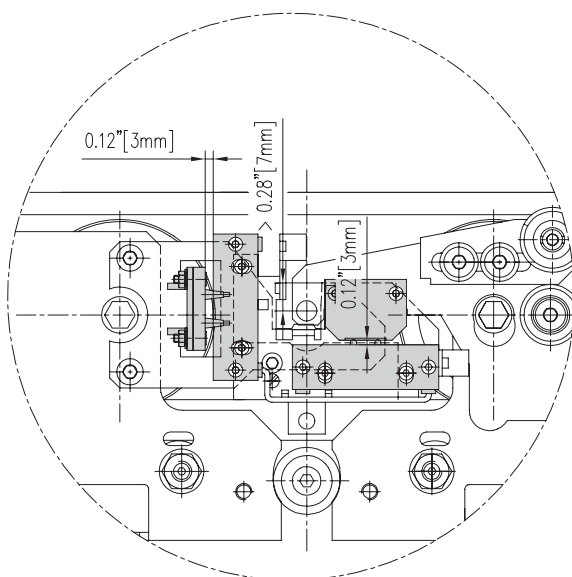
Automatic landing door SGV NA

Operating instructions

Code AM.2.005258.EN
Version B
Date 27.11.2020
Page 23.38

4.3 Lock contacts

	Standard	Measure
1	Contacts should be clean and have minimal wear	Metal visible
2	Lock hook and beak overlap when contact operates must be	min. 0.28" [7mm]
3	The contact bridge should push the contact surface down	min. 0.12" [3 mm]
4	Electrical terminations should be tight and secure	
5	Contact bridge should be aligned to the middle of contactorholes, not touching the hole edges	



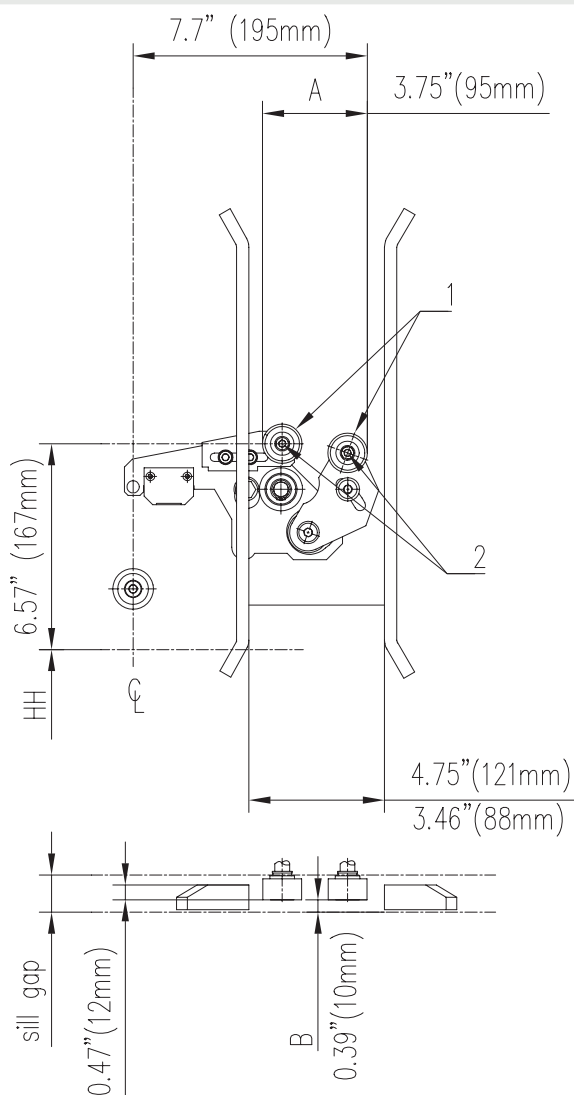
Automatic landing door SGV NA

Operating instructions

Code AM.2.005258.EN
Version B
Date 27.11.2020
Page 24.38

4.4 Lock rollers

Standard	Measure
1 Rollers should be in the middle of coupler vanes, running clearance	min. 0.3" [8mm] nom. 0.5" [13mm]
2 Distance of the lock rollers in locked position has to be	3.75" [95mm]
3 Should engage properly, engagement with rollers	min. 0.3" [8mm] nom. 0.39"[10 mm]
4 Should operate quietly	
5 Rollers should rotate freely	



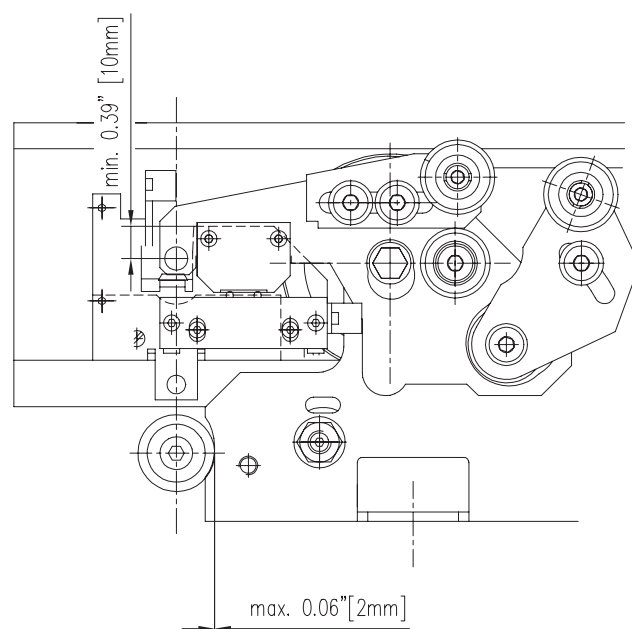
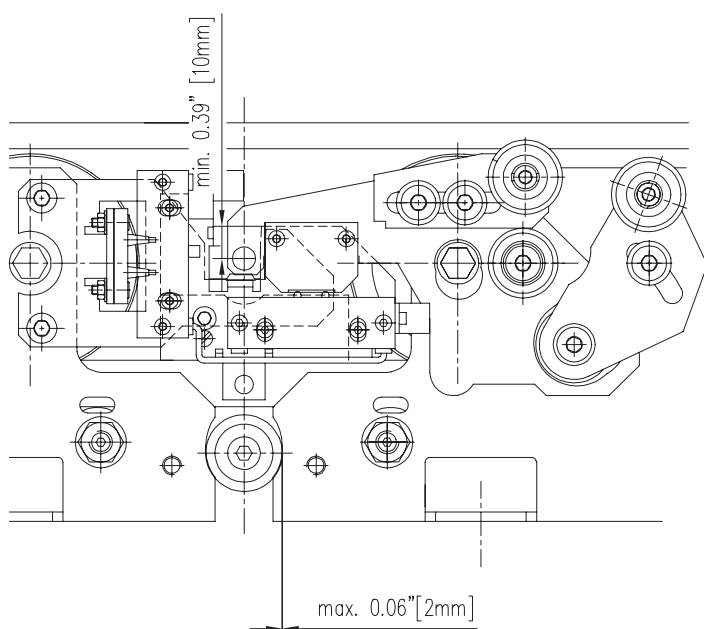
Automatic landing door SGV NA

Operating instructions

Code AM.2.005258.EN
Version B
Date 27.11.2020
Page 25.38

4.5 Lock unit

Standard	Measure
1 Must keep the door closed	
2 Must move freely and close by itself	Lock hook must touch buffer
3 Must be securely fixed	
4 Safety circuit must be interrupted if the door opens	
5 Lock hook buffers should be in place and have enough material to prevent noise	
6 Lock hook and beak overlap when lock is fully closed must be	min. 0.39" [10mm]
7 Play between lock hook and lock beak should be	0.06"-0.08" [1-2mm]



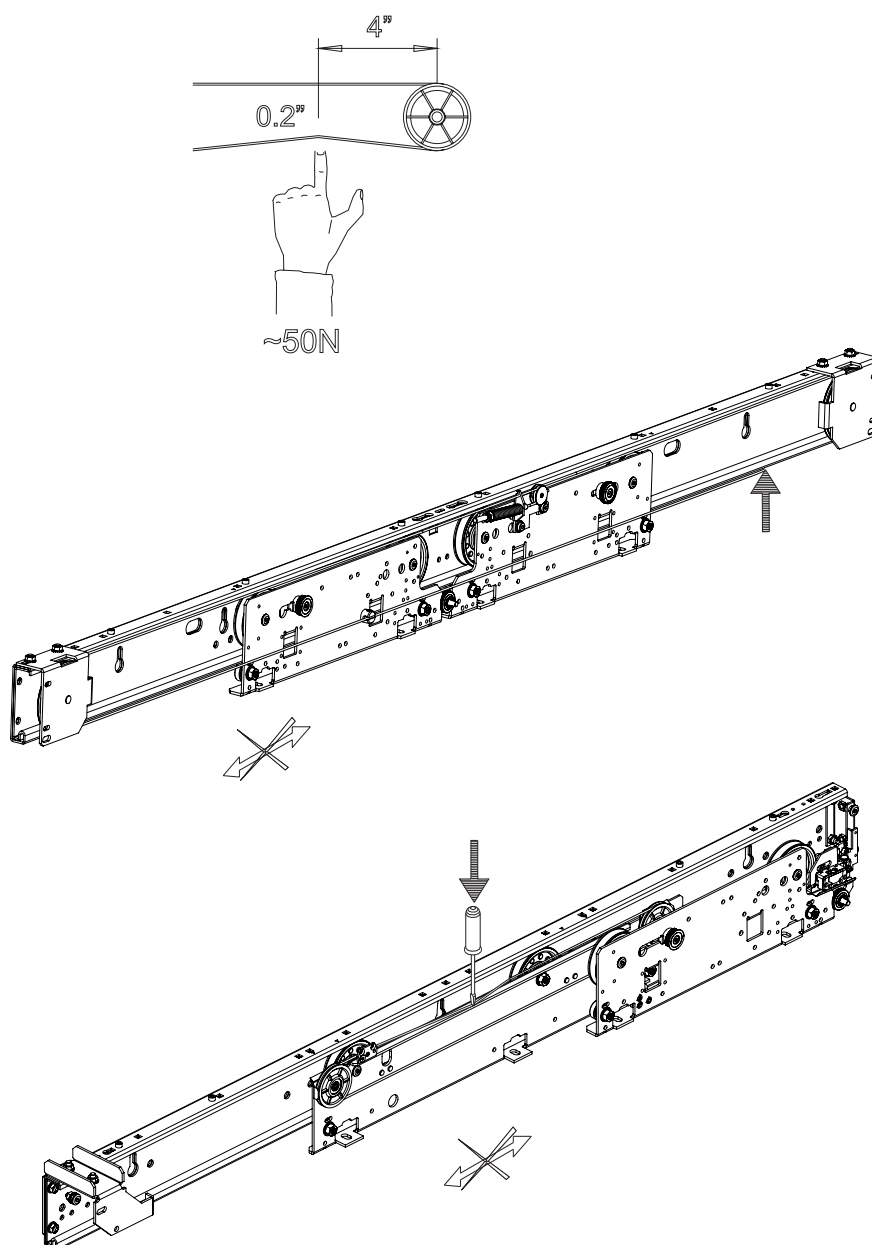
Automatic landing door SGV NA

Operating instructions

Code AM.2.005258.EN
Version B
Date 27.11.2020
Page 26.38

4.6 Synchronization cable tension

Standard	Measure
1 Should have no breaks or loose strains	
2 Push cable by the finger as in picture, cable must bend about	0.2" [5mm]
3 Synchronization cable should prevent loose play between panels	



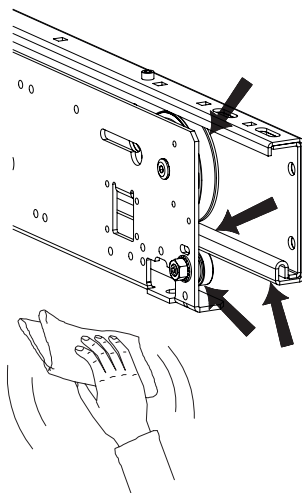
Automatic landing door **SGV NA**

Operating instructions

Code AM.2.005258.EN
Version B
Date 27.11.2020
Page 27.38

4.7 Railing profile

	Standard	Measure
1.	Railing profile and rollers must be clean and move easily (only dry cleaning, not grease or oil)	

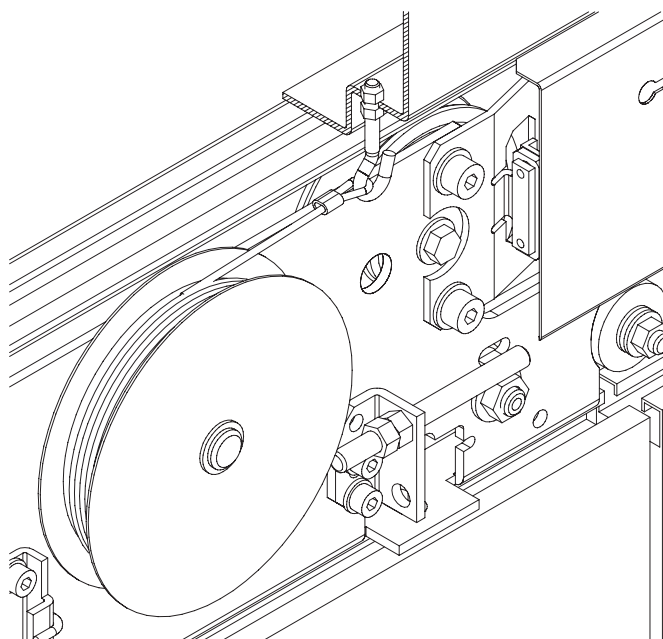


4.8 Closing device

	Standard	Measure
1	Must ensure full door closure of the stopped door from any position	
2	The door closer cable should have no visible breaks or loose strains	
3	Reel closer is completely preassembled from the factory, if adjustments are needed, see attached chart	

Reel closer pre-tension (revolutions)

LL	SGVNA 1S	SGVNA 2C	SGVNA 2T
32"	2,5	4,0	2,5
36"	2,5	3,5	2,5
42"	2,0	3,5	2,0
44"			2,0
46"			2,0
48"	1,5	3,0	1,5
54"			1,5
60"			1,5



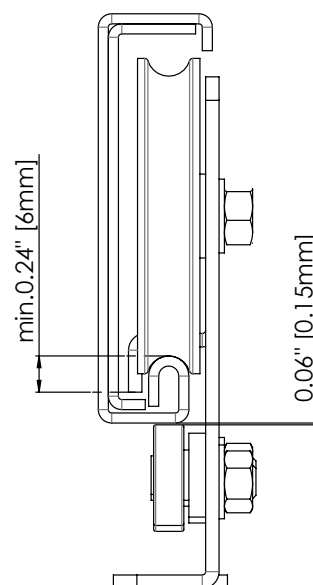
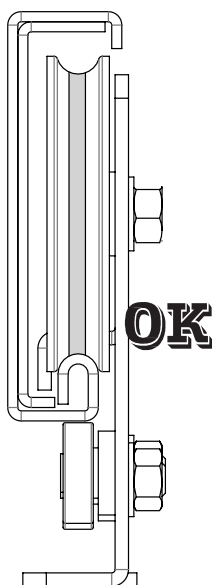
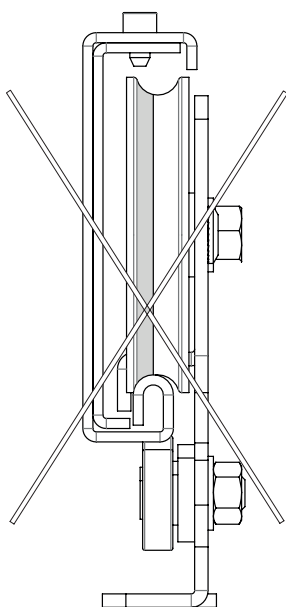
Automatic landing door SGV NA

Operating instructions

Code AM.2.005258.EN
Version B
Date 27.11.2020
Page 28.38

4.9 Pendant and anti-tip rollers

Standard	Measure
1 Rollers must be securely fastened and should run smoothly, aligned with the guide rail	
2 Rollers must not have any asymmetric wear	
3 Gap between counter rollers and railing:	0.06" [0,15 mm]
4 Pendant hook should be under the rail surface	min. 0.24" [6 mm]



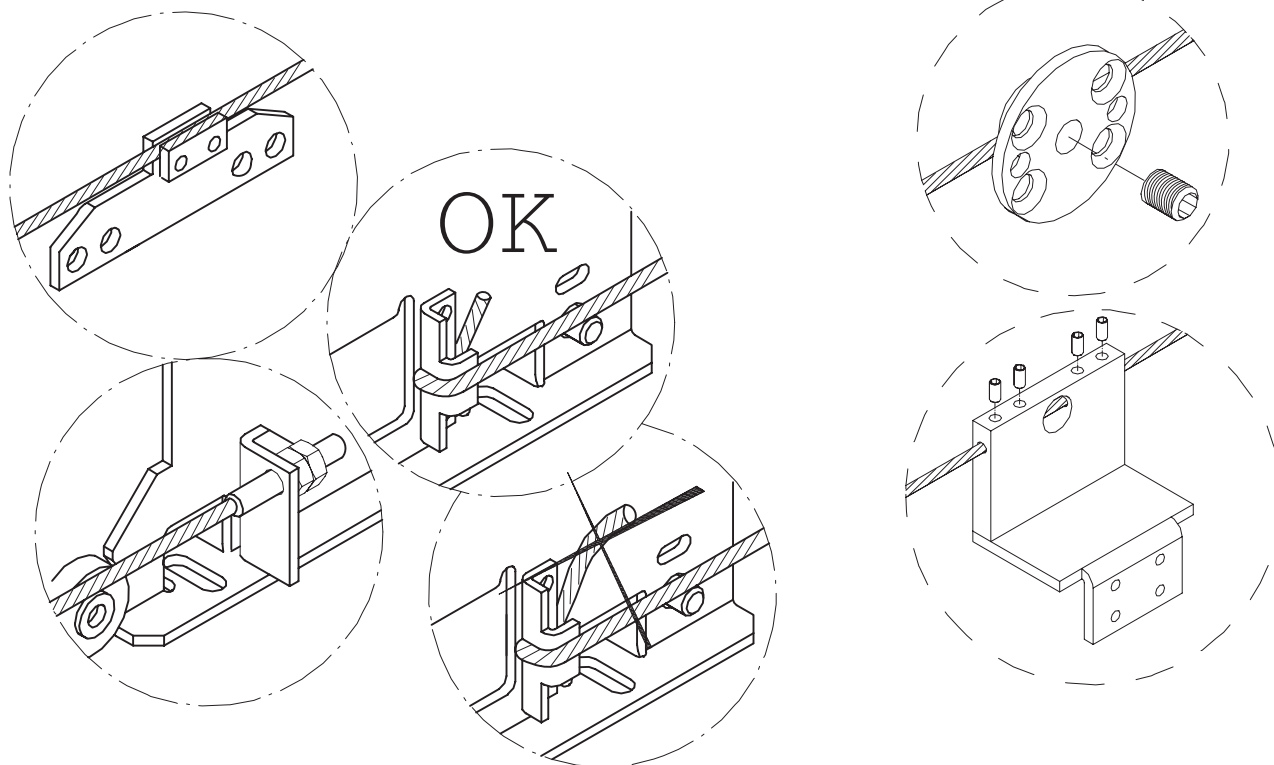
Automatic landing door SGV NA

Operating instructions

Code	AM.2.005258.EN
Version	B
Date	27.11.2020
Page	29.38

4.10 Synchronization cable fixing

Fix the synchronization cable as shown in drawing below NOTE! Remember to cut the extra cable.



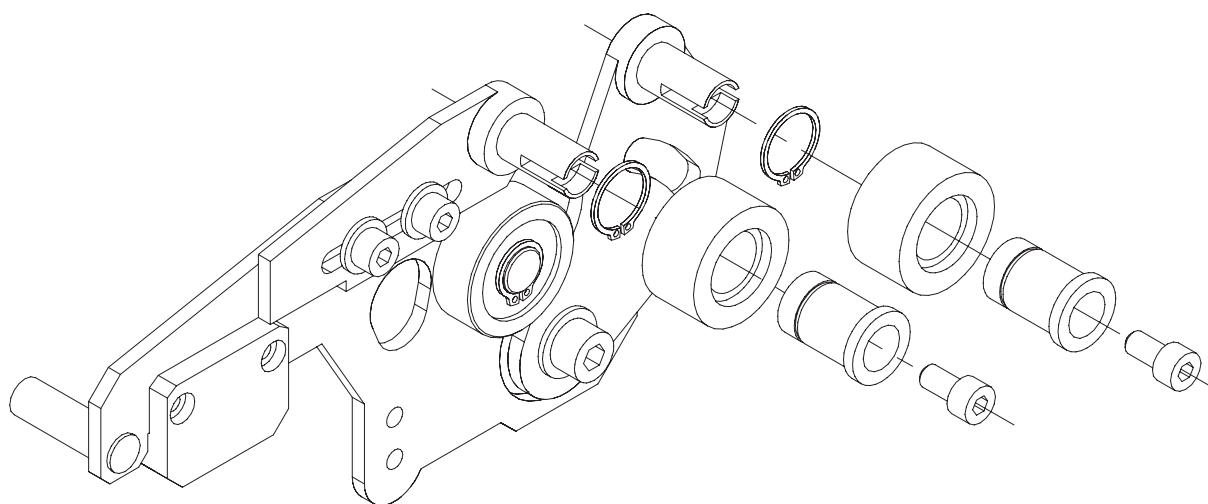
Automatic landing door SGV NA

Operating instructions

Code	AM.2.005258.EN
Version	B
Date	27.11.2020
Page	30.38

4.11 Changing landing lock rollers

Change the landing lock rollers as shown below by using a 4mm Allen key.
Notice new lock rollers correct position (see chapter 4.4).



Automatic landing door SGV NA

Operating instructions

Code AM.2.005258.EN
Version B
Date 27.11.2020
Page 31.38

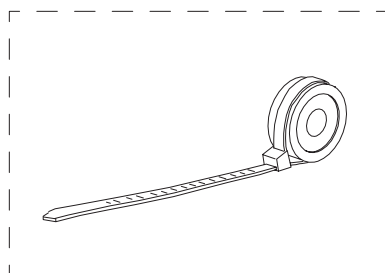
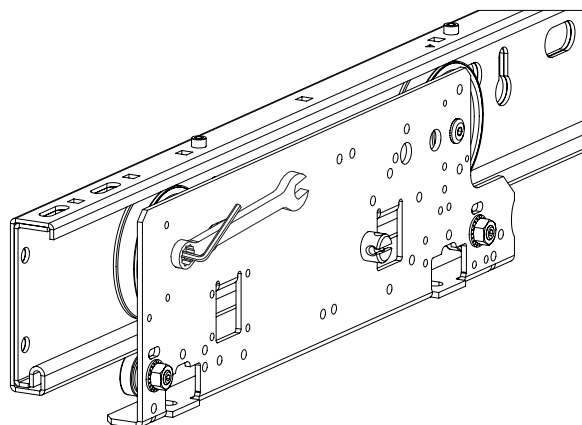
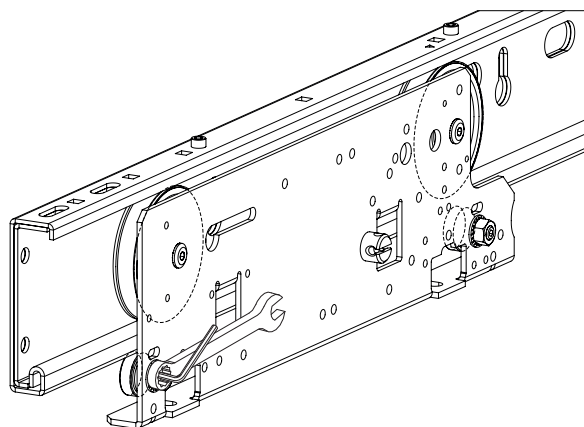
4.12 Changing rollers

Change the rollers as shown.

Tools needed: 4mm Allen key, 17mm hexagon wrench

NOTE! Pay special attention to get the square shafts properly into square holes.

- | Step | Action |
|------|--|
| 1. | Railing2 anti-tip roller has eccentric adjustment. |
| 2. | Outer pendant roller in landing SGVNA has also eccentric adjustment. |



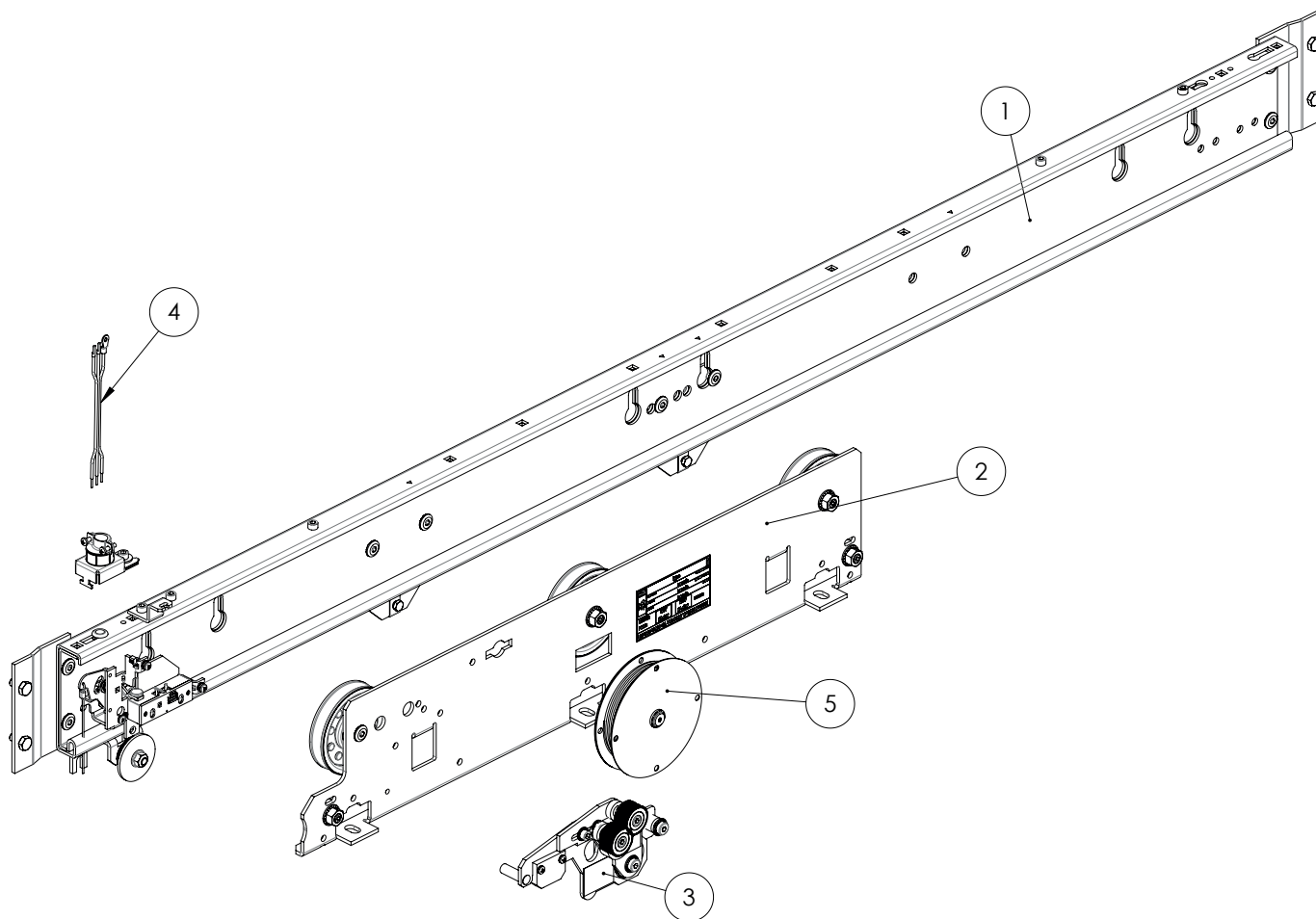
Automatic landing door SGV NA

Operating instructions

Code AM.2.005258.EN
Version B
Date 27.11.2020
Page 32.38

5 Spare parts

5.1 SGVNA 1S, 1 panel side opening (1042065)



Pos.	Part number	Description	Remarks
1	1046444 A01 1036479 P01	Profile, side opening	SGV 2 SGV 6
2	1046497 A01 1046497 A02	Pendant complete Pendant complete	Left opening, as picture see chapter 5.6 Right opening, mirror image
3	1042474 A01 1042474 A02	Lock hook complete Lock hook complete	Left opening, as picture see chapter 5.6 Right opening, mirror image
4	1044097 A01	Door contact wire	
5	1044151 A01	Reel closer	

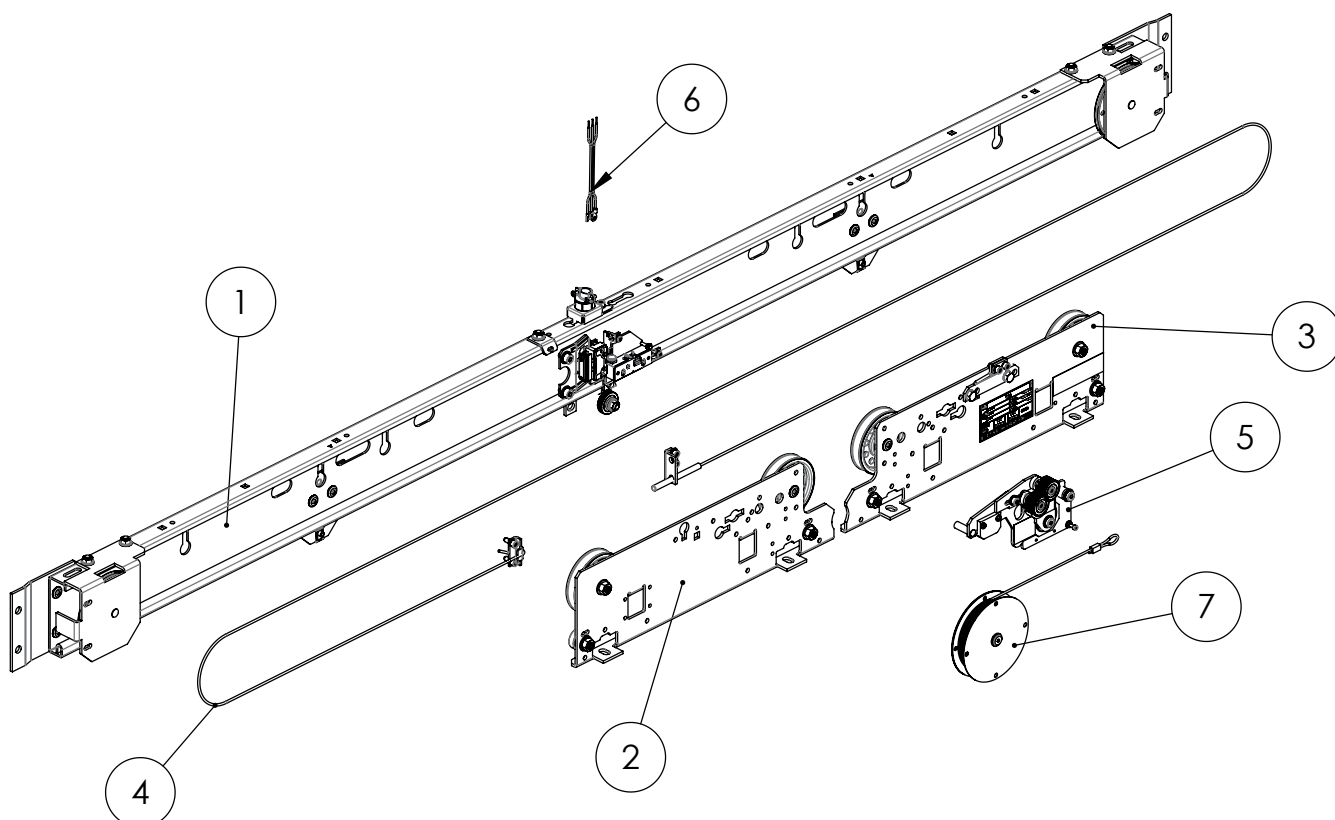
*) handness seen from landing side

Automatic landing door SGV NA

Operating instructions

Code AM.2.005258.EN
Version B
Date 27.11.2020
Page 33.38

5.2 SGVNA 2C, 2 panel centre opening (1039602)



Pos.	Part number	Description	Remarks
1	1039613 A01 1039610 P01	Profile, centre opening	SGV 2 SGV 6
2	1039633 A01 1039633 A03	Pendant right, complete Pendant left, complete	for no lock hook, see chapter 5.6, (as picture)for no lock hook (mirror image)
3	1039633 A02 1039633 A04	Pendant right, complete Pendant left, complete	for lock hook, see chapter 5.6 (as picture)for lock hook (mirror image)
4	1048611 A03 -049 1048611 A03 -059 1048611 A03 -072 1048611 A03 -081	Synchronization cable Synchronization cable Synchronization cable Synchronization cable	for door opening 36" for door opening 42",44" for door opening 46",48",54" for door opening 60"
5	1042474 A03 1042474 A04	Lock hook complete Lock hook complete	Lock at left Lock at right
6	1044097 A01	Door contact wire	
7	1044151 A01	Reel closer	

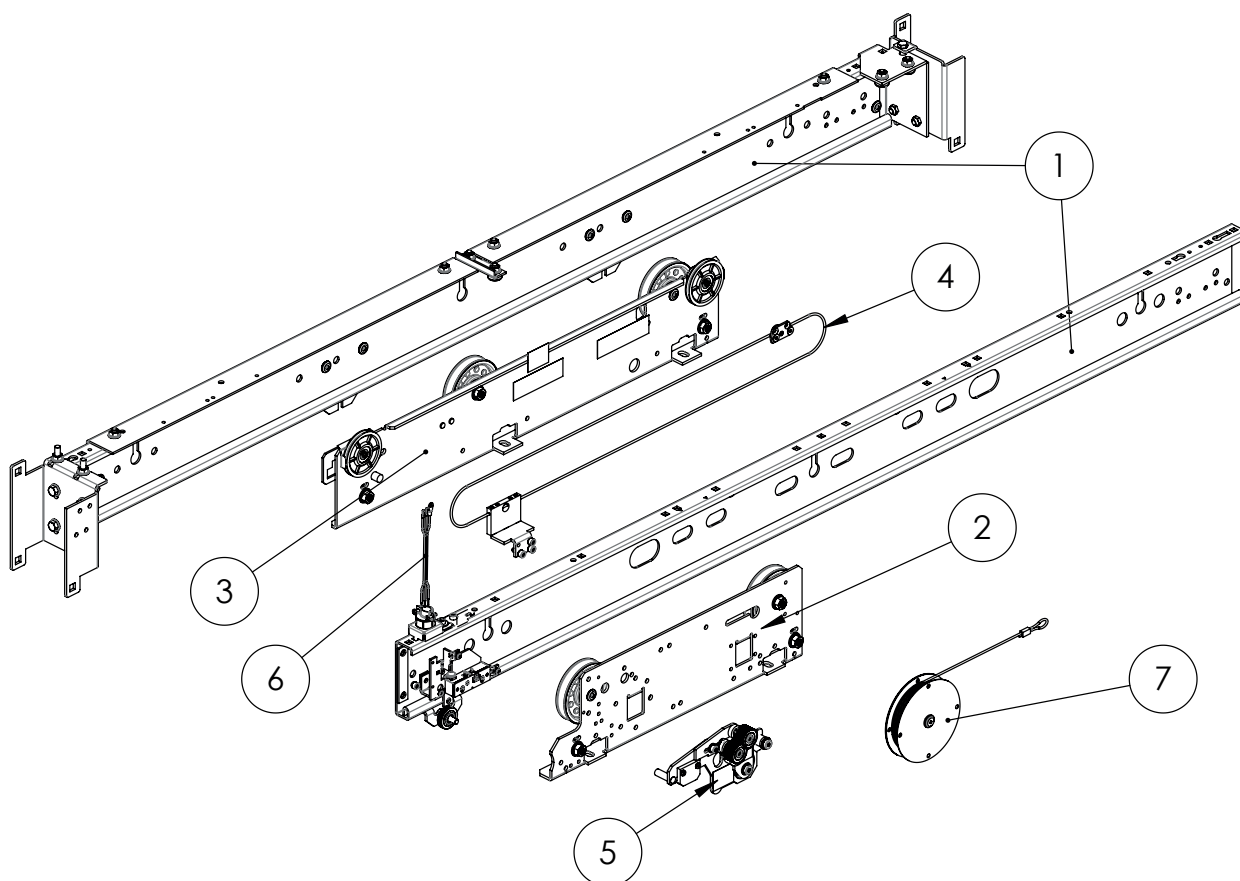
*) handness seen from landing side

Automatic landing door SGV NA

Operating instructions

Code AM.2.005258.EN
Version B
Date 27.11.2020
Page 34.38

5.3 SGVNA 2T, 2 panel side opening (1039415)



Pos.	Part number	Description	Remarks
1	1043974 A01 1043974 A03 1039421 P01 1039421 P02	Profile, side opening	SGV 2 slow hanger SGV 2 fast hanger SGV 6 slow hanger SGV 6 fast hanger
2	1040335 A01 1040335 A02	Fast pendant complete Fast pendant complete	Left opening, see chapter 5.6 (as picture) Right opening (mirror image)
3	1040375 A01 1040375 A02	Slow pendant complete Slow pendant complete	Left opening, see chapter 5.7 (as picture) Right opening (mirror image)
4	W002147	Synchronization cable	
5	1042474 A03 1042474 A04	Lock hook complete Lock hook complete	Left opening (as picture) Right opening (mirror image)
6	1044097 A01	Door contact wire	
7	1044151 A01	Reel closer	

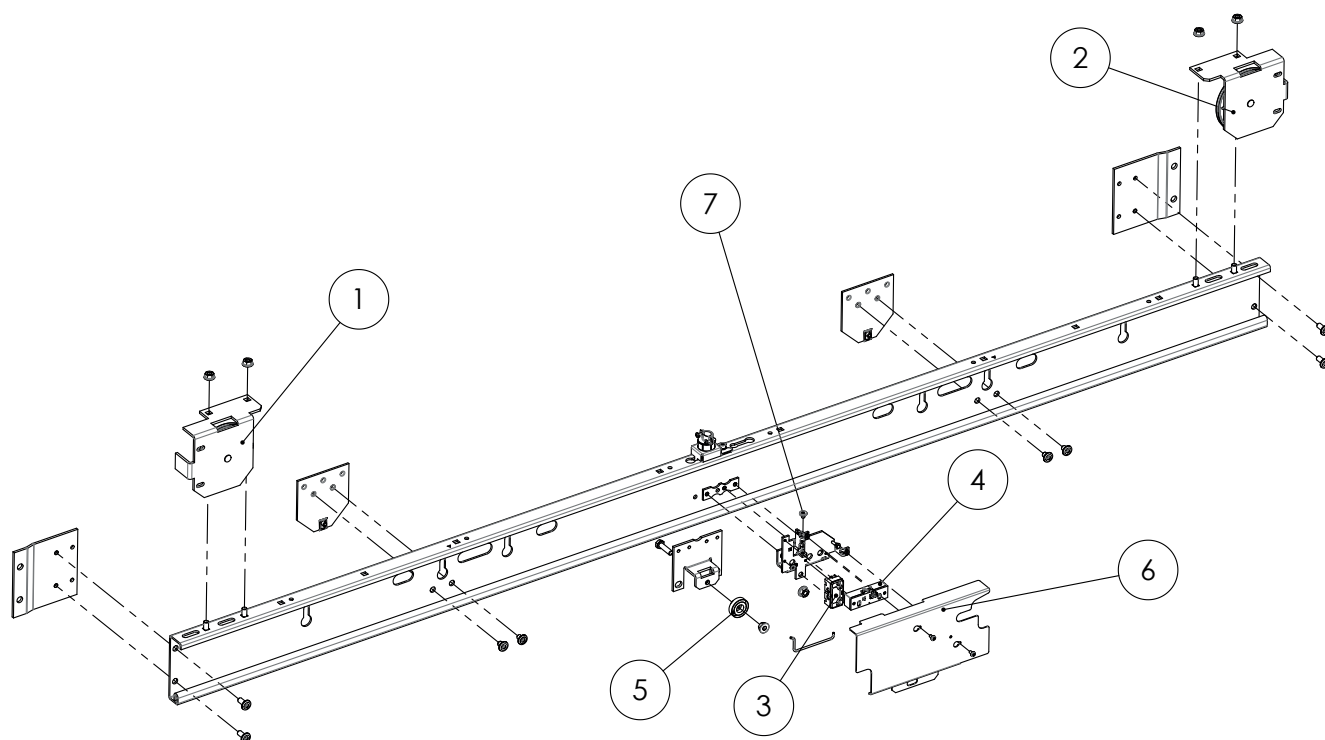
*) handness seen from landing side

Automatic landing door **SGV NA**

Operating instructions

Code AM.2.005258.EN
Version B
Date 27.11.2020
Page 35.38

5.4 Profile 2 parts centre opening



Pos.	Part number	Description	Remarks
1	1044108 A05	Diverting cable pulley, right	Synchronization cable pulley
2	1044108 A06	Diverting cable pulley, left	Synchronization cable pulley
3	W002171	Door contact	additional latch SEL2-A1Z P
4	W002098	Door contact	Lock hook AZ05KT
5	1044069 A02	Buffer	
6	1044099 P01 1044099 P02	Cover Cover	Lock at left (as picture)lock at right (mirror image)
7	1044 095 P01	Buffer	

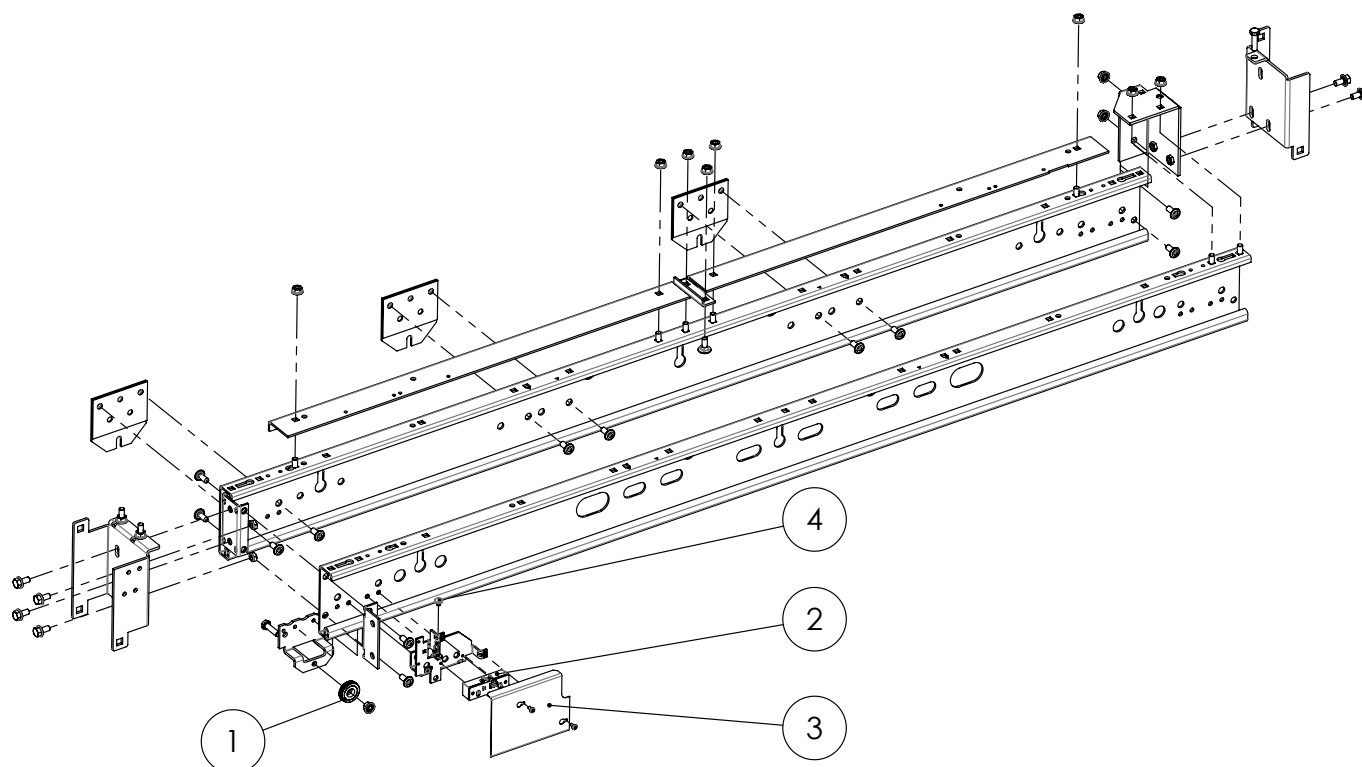
*) handness seen from landing side

Automatic landing door SGV NA

Operating instructions

Code AM.2.005258.EN
Version B
Date 27.11.2020
Page 36.38

5.5 Profile 2 parts side opening



Pos.	Part number	Description	Remarks
1	1044069 A02	Buffer	
2	W002098	Door contact	
3	1044099 P01 1044099 P02	Cover Cover	lock at left (as picture)lock at right (mirror image)
4	1044095 P01	Buffer	

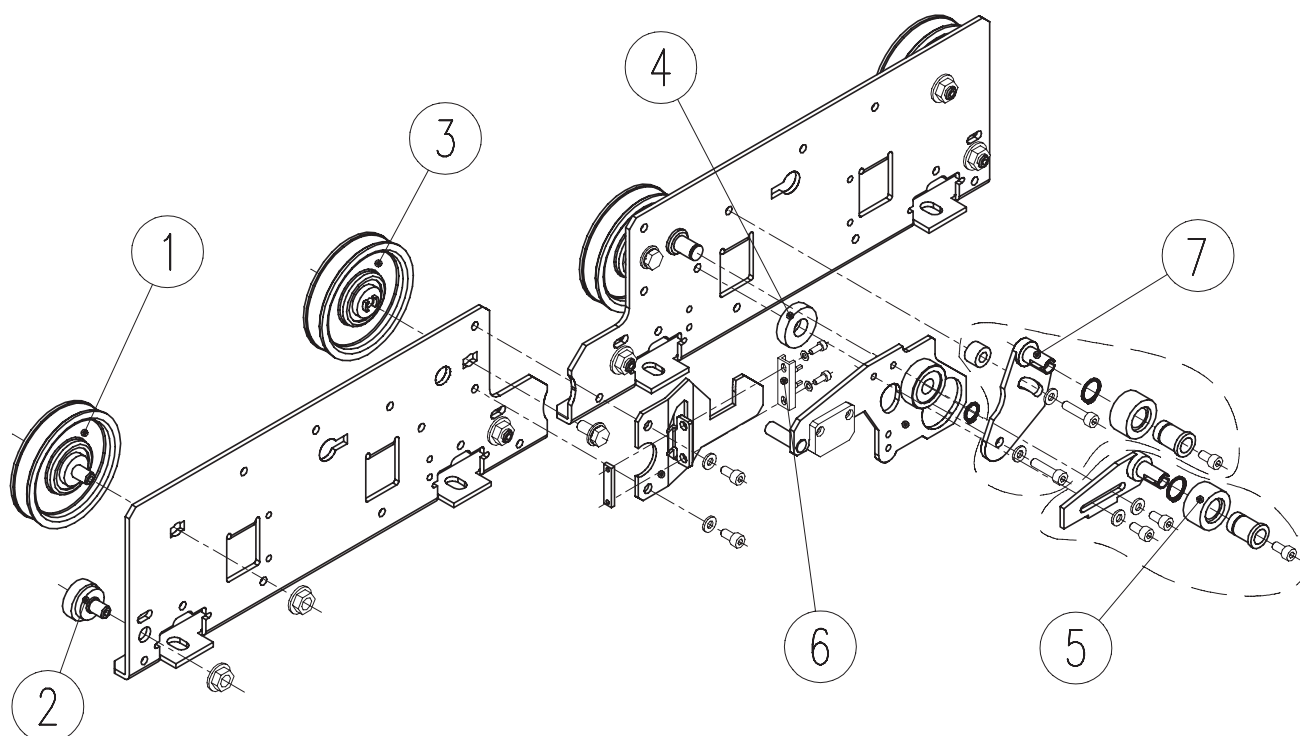
*) handness seen from landing side

Automatic landing door SGV NA

Operating instructions

Code AM.2.005258.EN
Version B
Date 27.11.2020
Page 37.38

5.6 Fast pendant parts



Pos.	Part number	Description	Remarks
1	1044072 A02	Roller	Pendant roller (eccentric)
2	1044077 A01	Roller	Counter roller
3	1044072 A01	Roller	Pendant roller
4	1044069 A02	Buffer	
5	1044191 A03	Lock roller	lock at left (as picture)lock at right (mirror image)
6	W002170	Door contact plug	or equivalent type
7	1044179 A01 1044179 A02	lock roller carrier Lock roller carrier	lock at left (as picture)lock at right (mirror image)

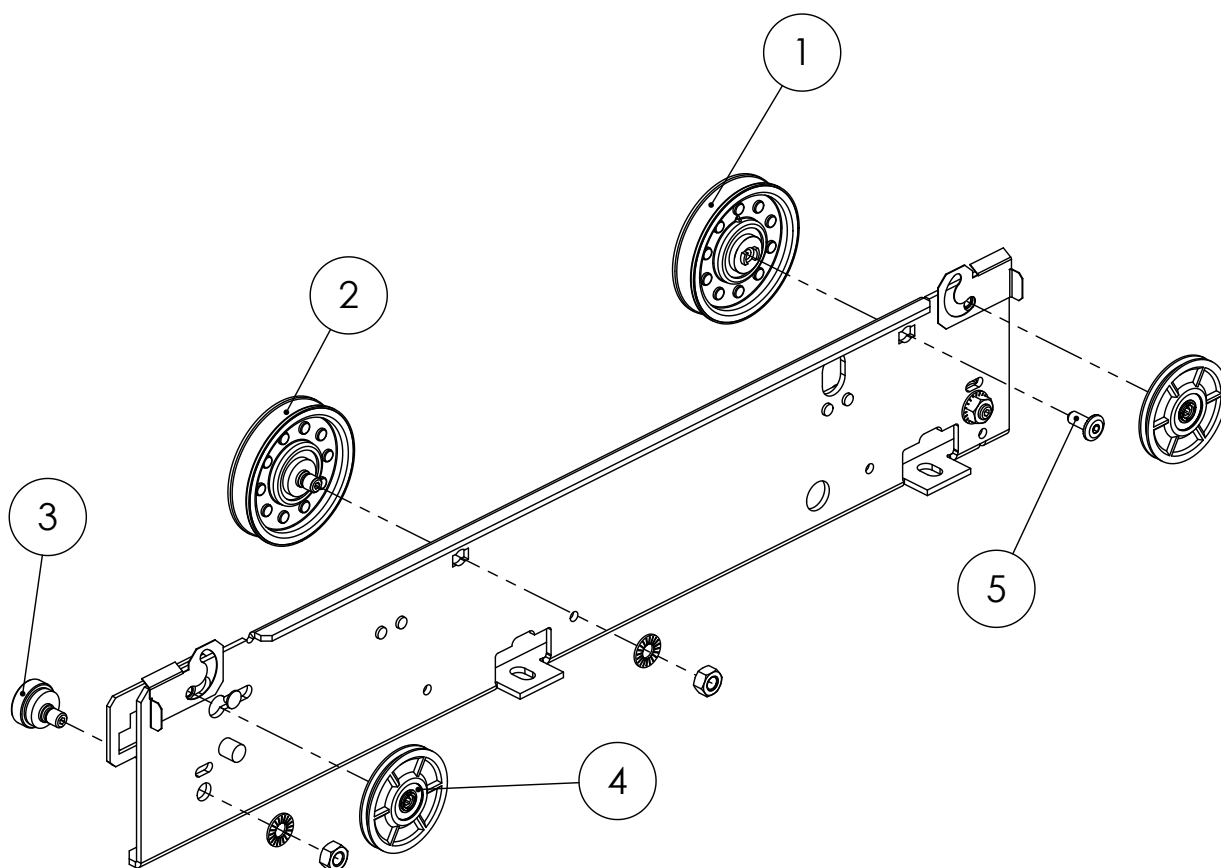
*) handness seen from landing side

Automatic landing door SGV NA

Operating instructions

Code AM.2.005258.EN
Version B
Date 27.11.2020
Page 38.38

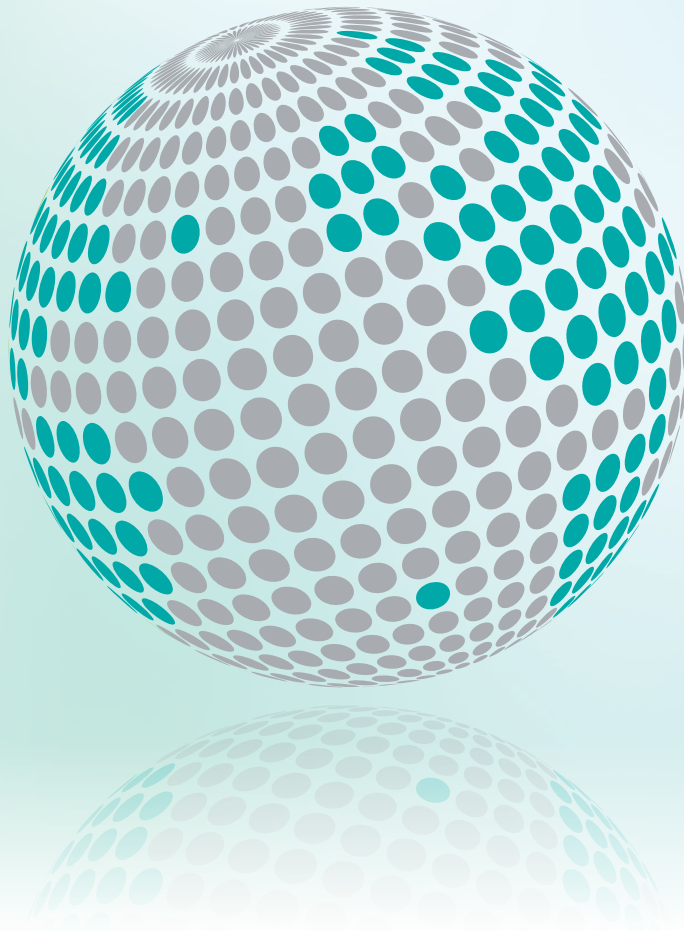
5.7 Slow pendant parts



Pos.	Part number	Description	Description
1	1044072 A01	Roller	Hanger roller
2	1044072 A02	Roller	Hanger roller with eccentric bolt
3	1044077 A01	Roller	Counter roller, uptrust
4	1044538 A01	Roller	Synchronization roller
5	1044055 P02	Bolt, sheave M8x20	Low head screw



YOUR GLOBAL PARTNER FOR COMPONENTS,
MODULES AND SYSTEMS IN THE ELEVATOR INDUSTRY



sematic
a WITTUR brand

Liftmaterial
a WITTUR brand

safety **in** *motion*TM

www.wittur.com

More information
about Wittur Group
available on-line.

