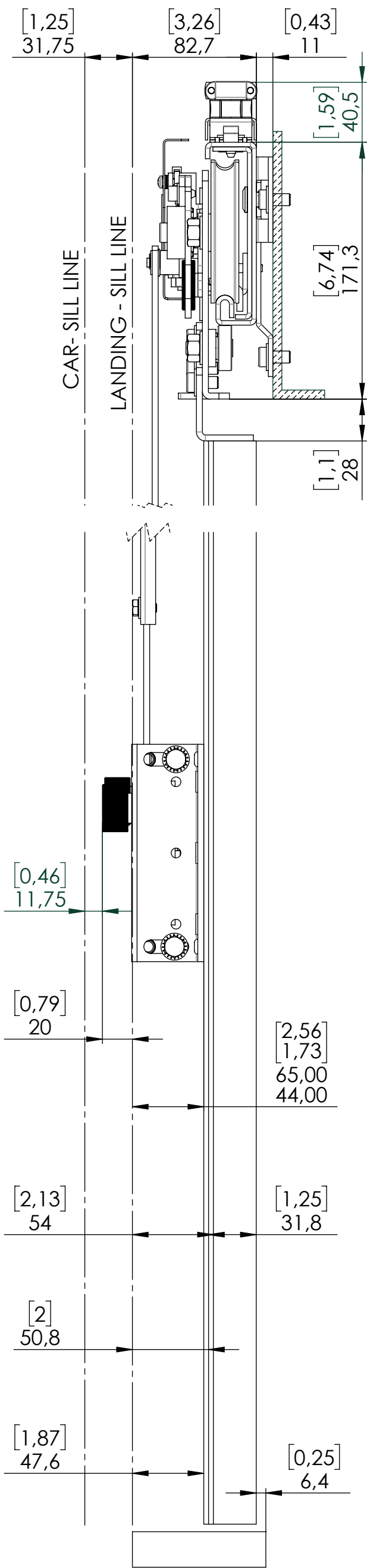


The reproduction, distribution and utilization of this document as well as the communication of its contents to others without express authorization is prohibited. Offenders will be held liable for the payment of damages. All rights reserved in the event of the grant of a patent, utility model or design. Il riproduzione, distribuzione e utilizzo di questo documento, così come la comunicazione dei suoi contenuti ad altri, senza l'autorizzazione espressa del progettista, è vietata. Gli autori si assumono la responsabilità per i danni causati dalla riproduzione, distribuzione o utilizzo non autorizzati di questo documento. Tutti i diritti sono riservati in caso di concessione di un brevetto, modello di utilità o design.

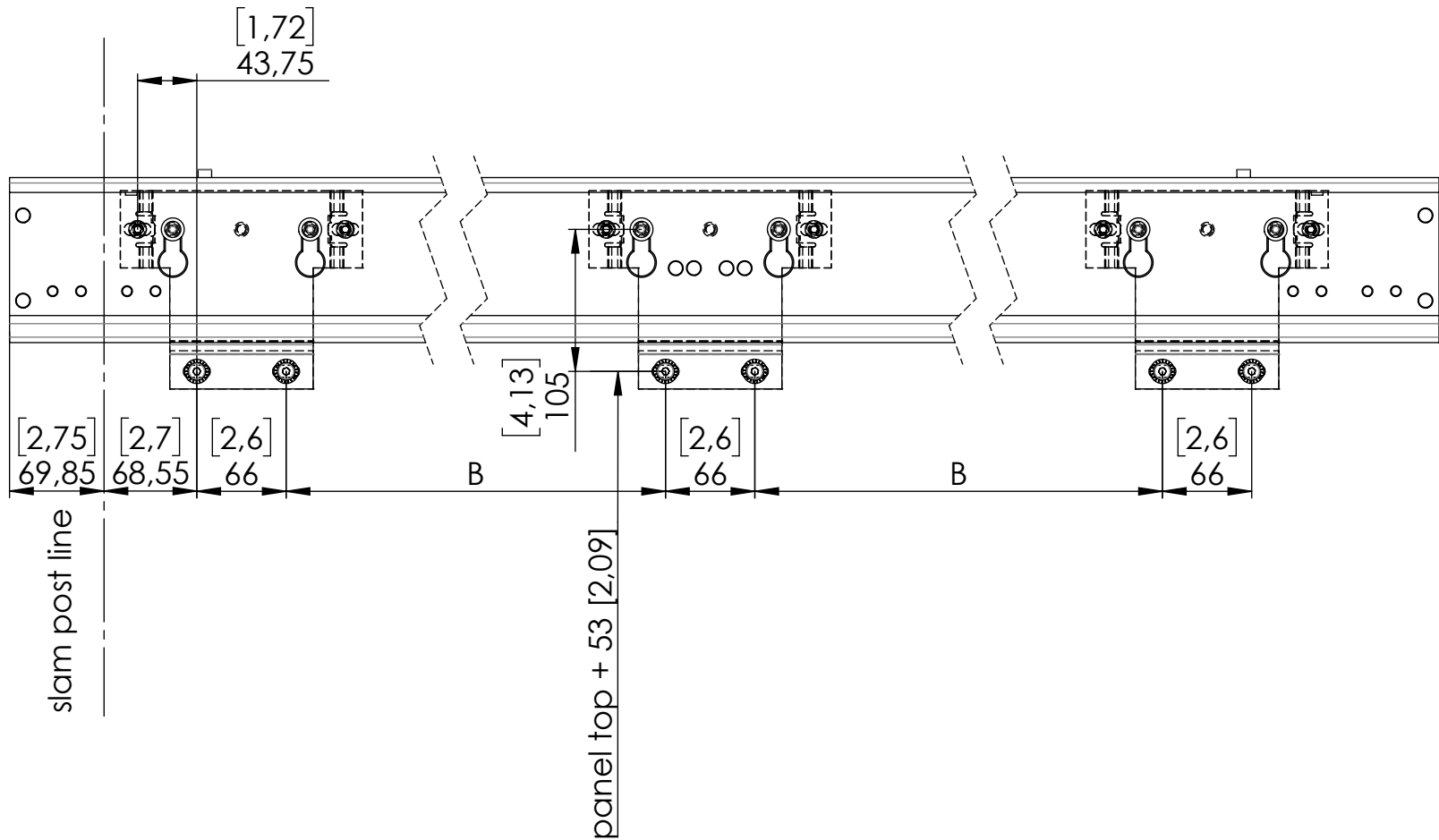
Released for Production

©WITTUR HOLDING GmbH

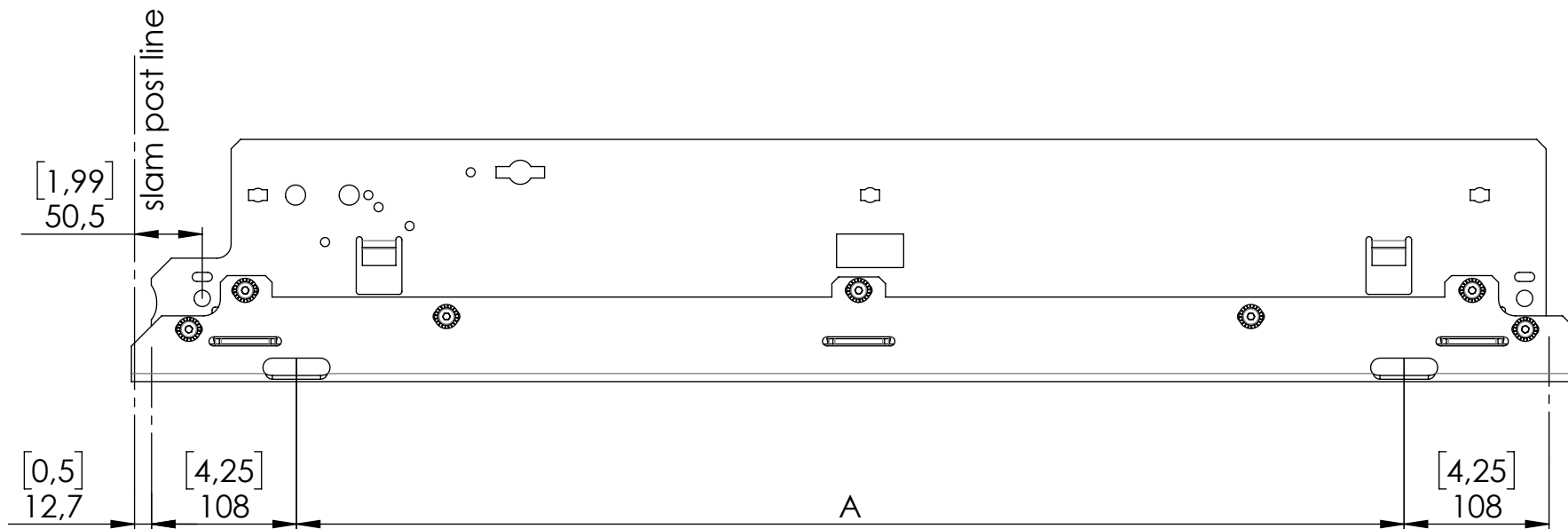
1	Landing Door Mechanism	1042065
2	Mechanism Bracket	1047620
3	Panel Adapter Angle	1047581
4	Lockrollers	0905040



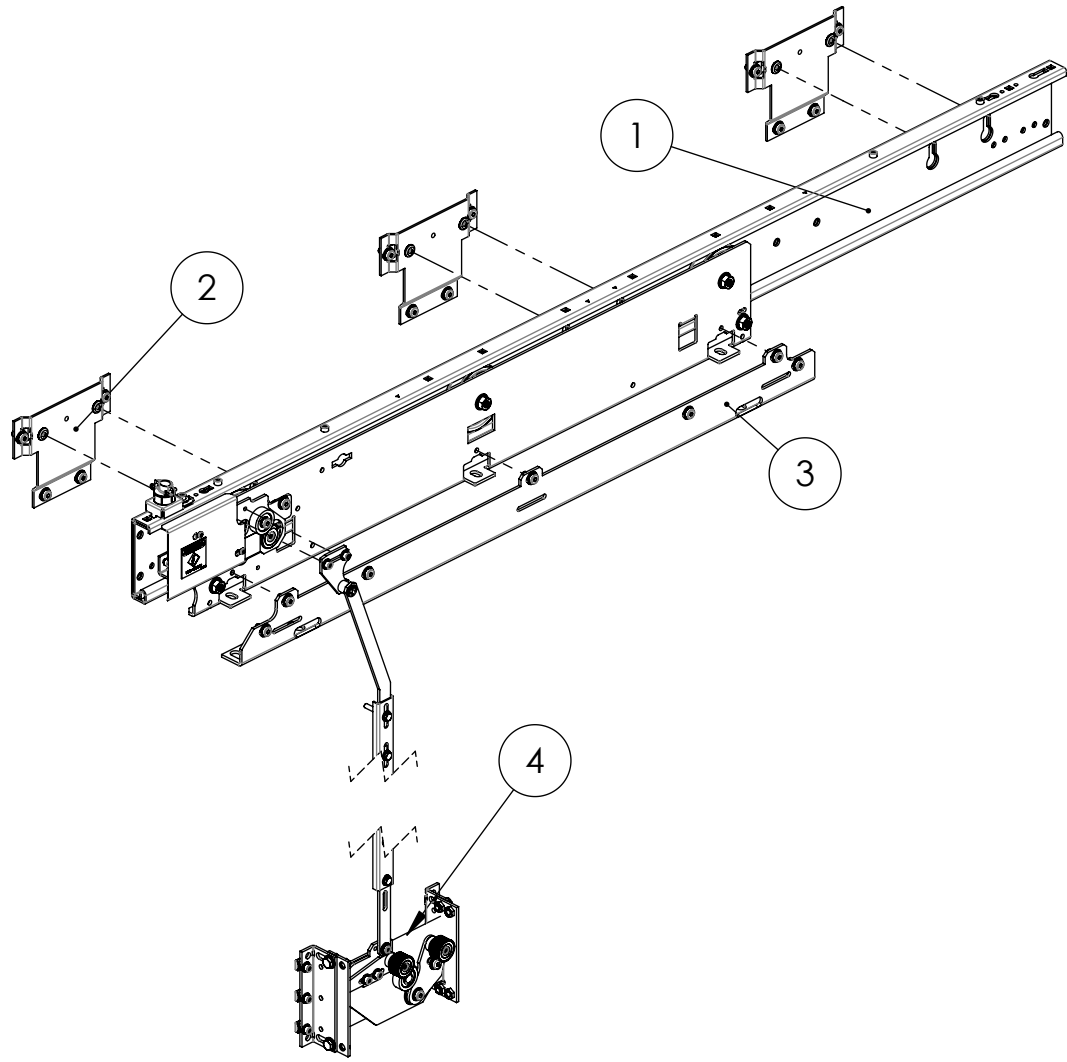
Mechanism Bracket 1047620



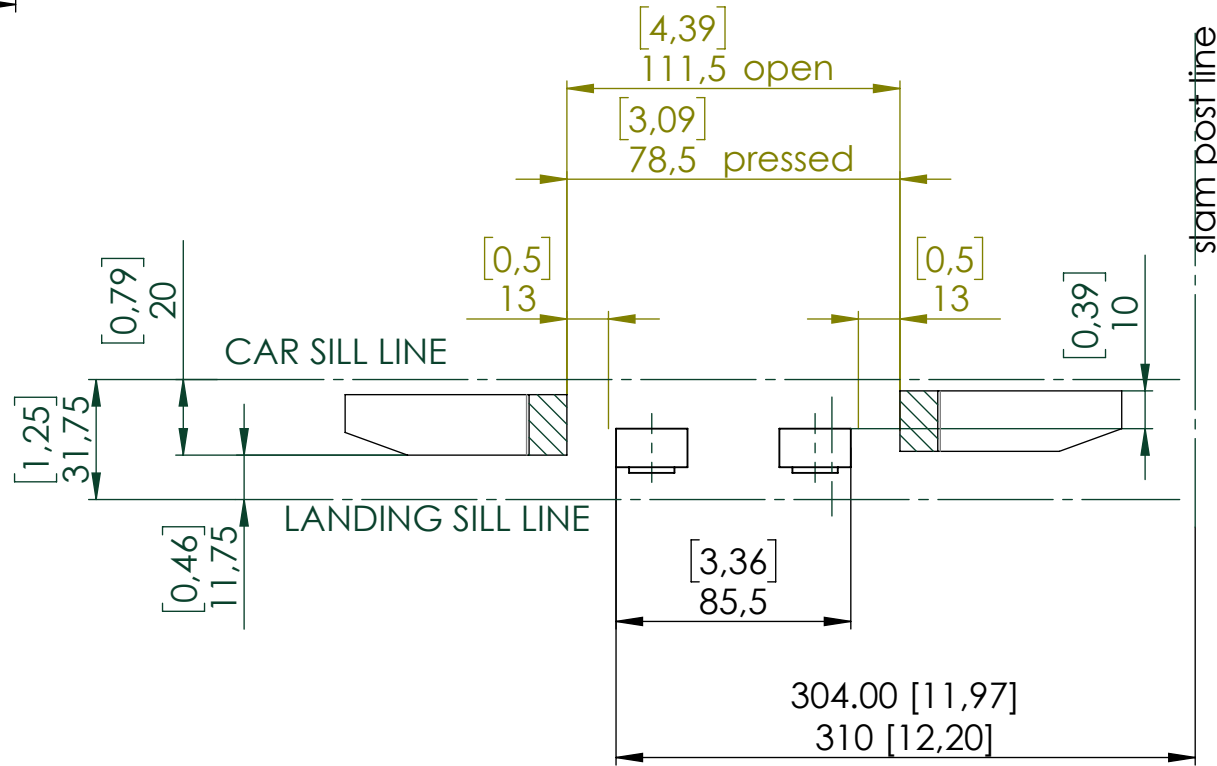
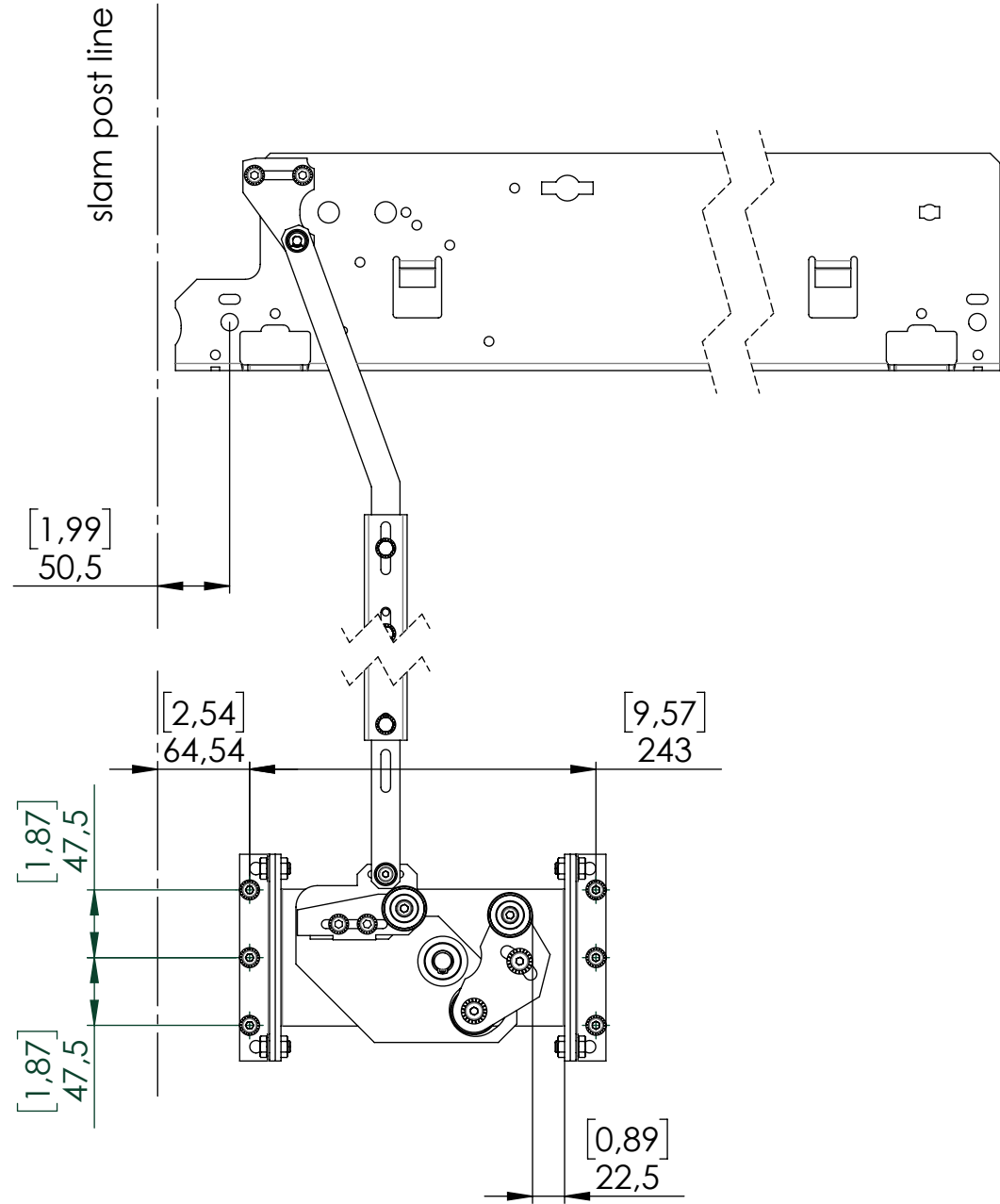
Panel Adapter Angle 1047581



42" (1066.8)	825.5 [32.5"]	874 [34.4"]
41" (1041.4)	800.1 [31.5"]	848.4 [33.4"]
40" (1016)	774.7 [30.5"]	823 [32.4"]
39" (990.6)	749.3 [29.5"]	797.6 [31.4"]
38" (965.2)	723.9 [28.5"]	772.2 [30.4"]
37" (939.8)	698.5 [27.5"]	746.8 [29.4"]
36" (914.4)	673.1 [26.5"]	721.6 [28.4"]
35" (889)	647.7 [25.5"]	696.2 [27.4"]
34" (863.6)	622.3 [24.5"]	670.8 [26.4"]
33" (838.2)	596.9 [23.5"]	645.4 [25.4"]
32" (812.8)	571.5 [22.5"]	619.8 [24.4"]
CO	A	B



Lockrollers 1042474



GEN. TOLERANCE WST-0003 TOLERANCE GEN. WST-0003 GT2	FUNCTIONAL CLASS CLASSE FUNZIONALE B	DESCRIPTION Quick Installation Guide MAC SGV NA - 1S	PRODUCT CATEGORY CATEGORIA PRODOTTO 2 - DOORS	PRODUCT CODE CODICE PRODOTTO SGV
SURFACE TEXTURE SYMBOLS SIMB. RUGOSITA' SUPERFICIALE ISO1302	GEOM. TOLERANCE SYMBOLS SIMB. TOLLERANZE GEOM. ISO1101	SCALE SCALA 1:5	DESIGNED BY CONSTRUITO DA AT1KalpaD	DRAWN BY DISEGNATO DA AT1KalpaD
WITTUR		1064215	1/1	14/09/2020
			- Released	dollima
				22/10/2020