

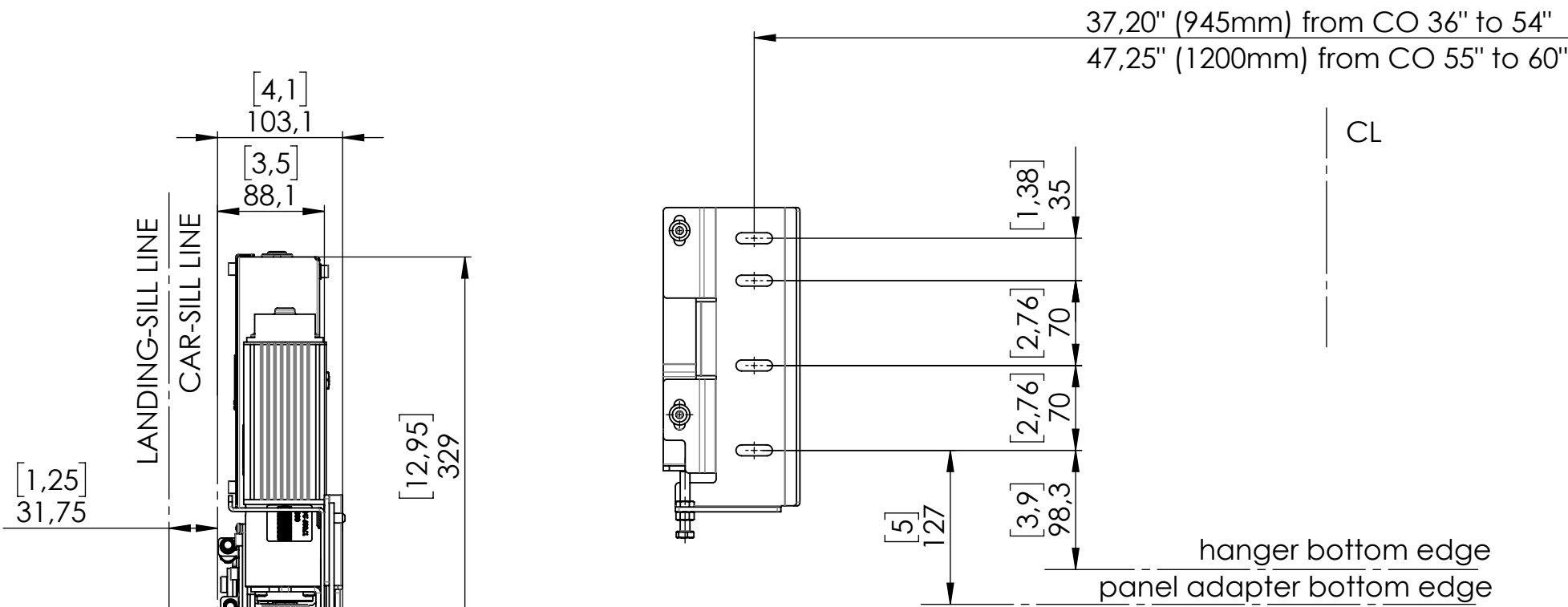
Released for Production

©WITTUR HOLDING GmbH

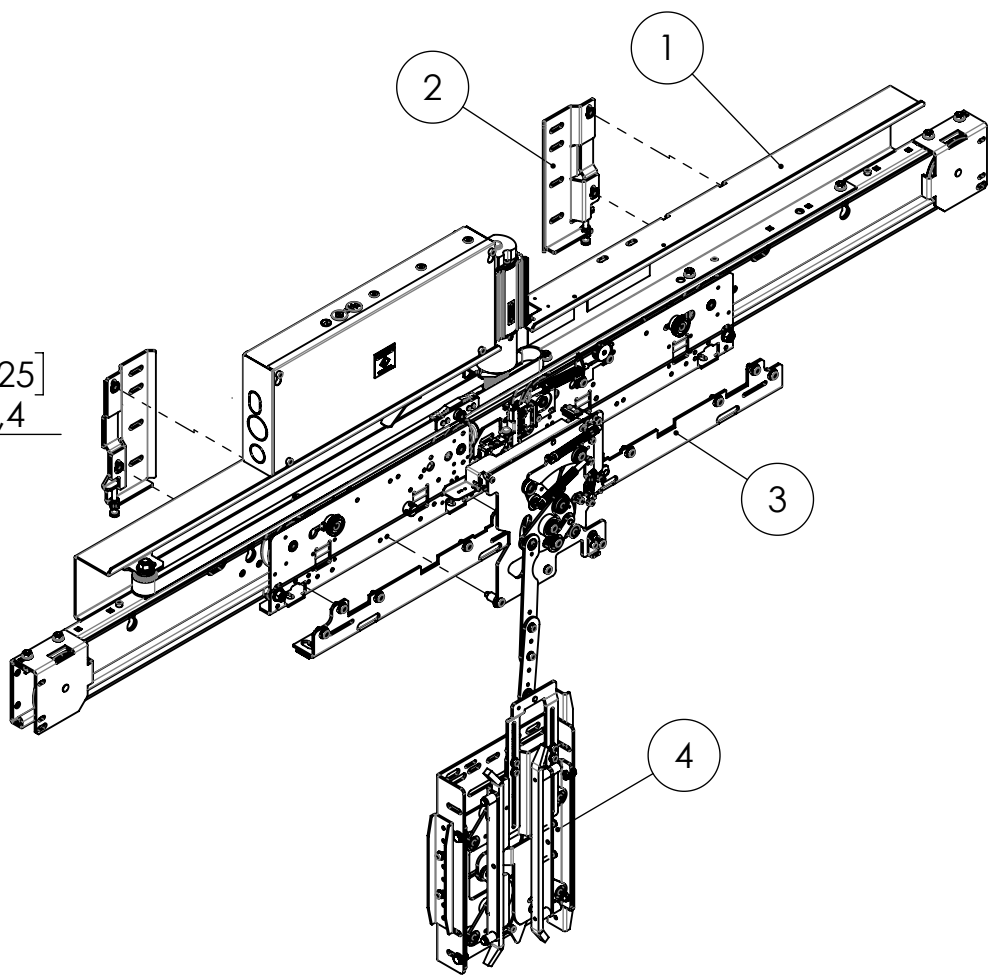
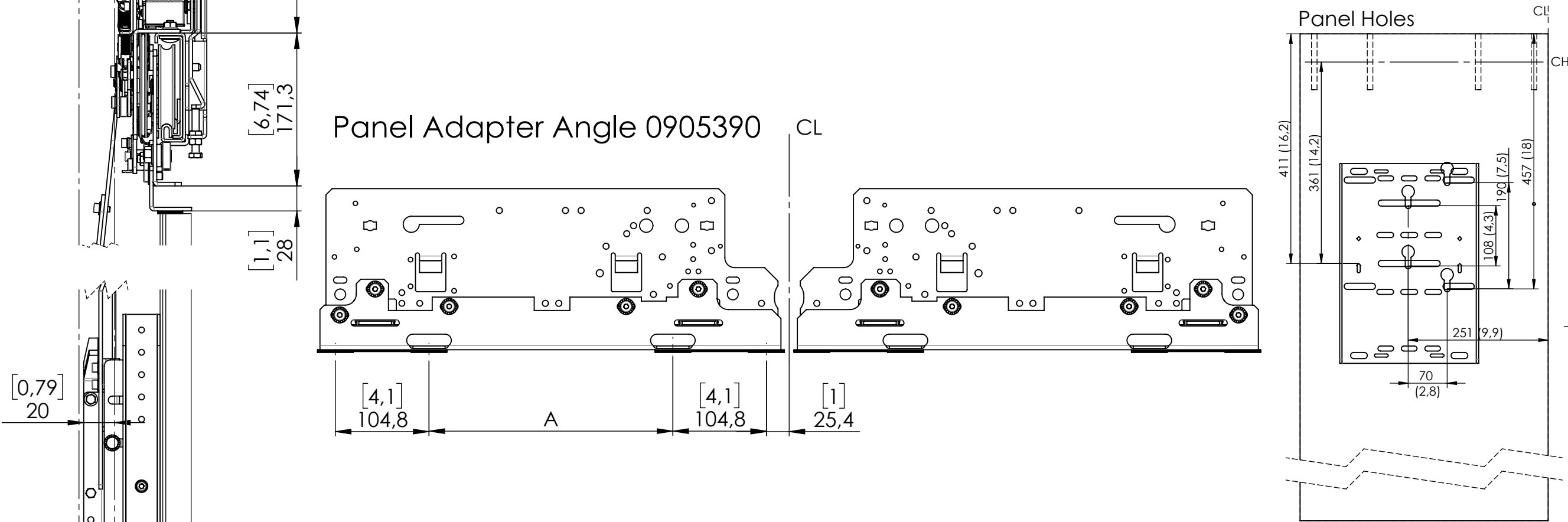
The reproduction, distribution and utilization of this document as well as the communication of its contents to others without express authorization is prohibited. Offenders will be held liable for the payment of damages. All rights reserved in the event of the grant of a patent, utility model or design. The reproduction, distribution and utilization of this document as well as the communication of its contents to others without express authorization is prohibited. Offenders will be held liable for the payment of damages. All rights reserved in the event of the grant of a patent, utility model or design.

1	Car Door Operator	1040038
2	Car Door Operator Bracket	1039395
3	Panel Adapter Angle	0905390
4	Car Door Interlock	1031827

Car Door Operator Bracket 1039395

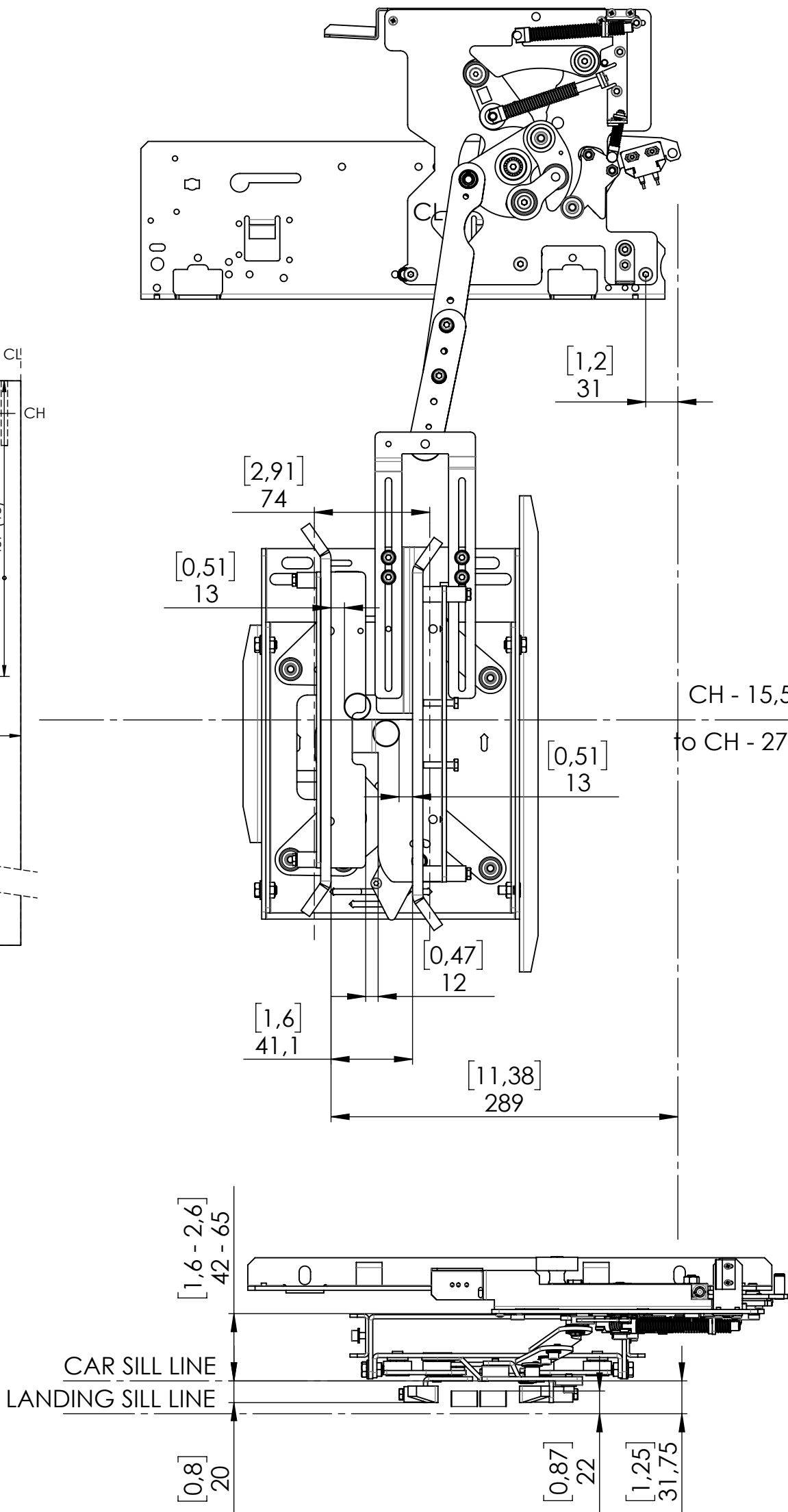


Panel Adapter Angle 0905390



60"	(1524mm)	19,75" (501,7 mm)
58"	(1473,2mm)	18,75" (476,3 mm)
56"	(1422,4mm)	17,75" (450,9 mm)
54"	(1371,6mm)	16,75" (425,5 mm)
52"	(1320,8mm)	15,75" (400,1 mm)
50"	(1270mm)	14,75" (374,4 mm)
48"	(1219,2mm)	13,75" (349,3 mm)
46"	(1168,4mm)	12,75" (323,9 mm)
44"	(1117,6mm)	11,75" (298,5 mm)
42"	(1066,8mm)	10,75" (273,1 mm)
40"	(1016mm)	9,75" (247,6 mm)
38"	(965,2mm)	8,75" (222,3 mm)
36"	(914,4mm)	7,75" (196,8 mm)
CO		A

Car Door Operator Interlock 1031827



GEN. TOLERANCE WST-0003 TOLERANCE GEN. WST-0003 GT2	FUNCTIONAL CLASS CLASSE FUNZIONALE B	DESCRIPTION Quick Installation Guide DOVER SGV NA - 2C	PRODUCT CATEGORY CATEGORIA PRODOTTO 2 - DOORS	PRODUCT CODE CODICE PRODOTTO SGV
SURFACE TEXTURE SYMBOLS SIMB. RUGOSITÀ SUPERFICIALE ISO1302	GEOM. TOLERANCE SYMBOLS SIMB. TOLLERANZE GEOM. ISO1101	SCALE SCALA 1:5	SIZE FORMATO A2	DESIGNED BY COSTRUTTO DA AT1OberR
WITTUR		1062439	1/1	DATE DATA 30/07/2020
			REVISION REVISIONE -	FIRST APPROVAL PRIMA APPROVAZIONE dollima
				DATE DATA 15/10/2020