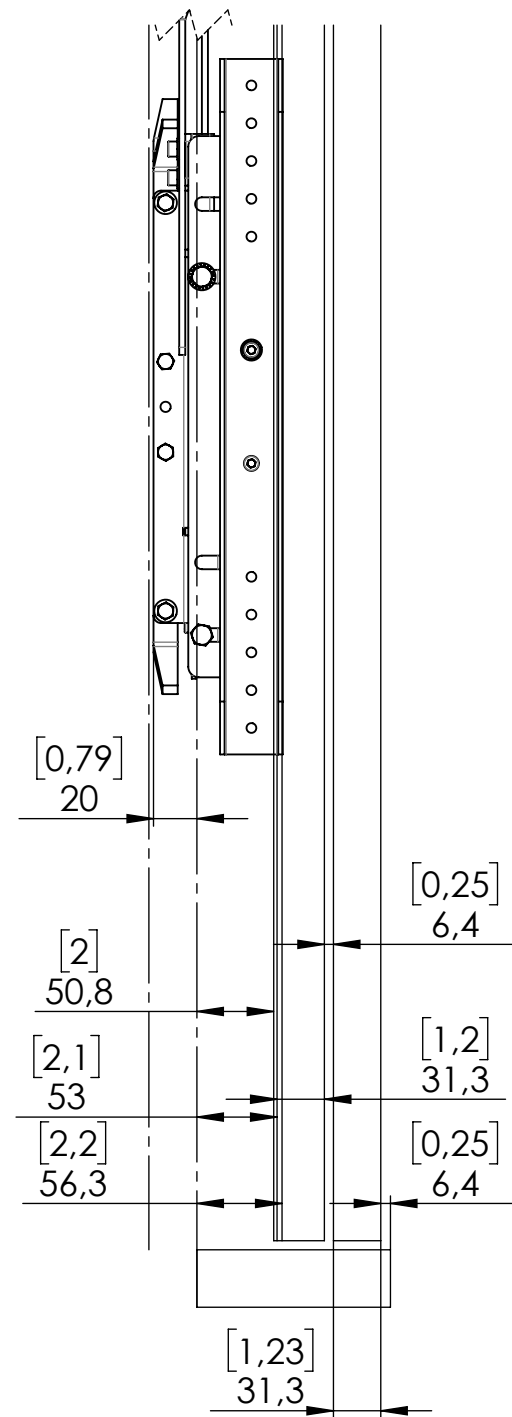
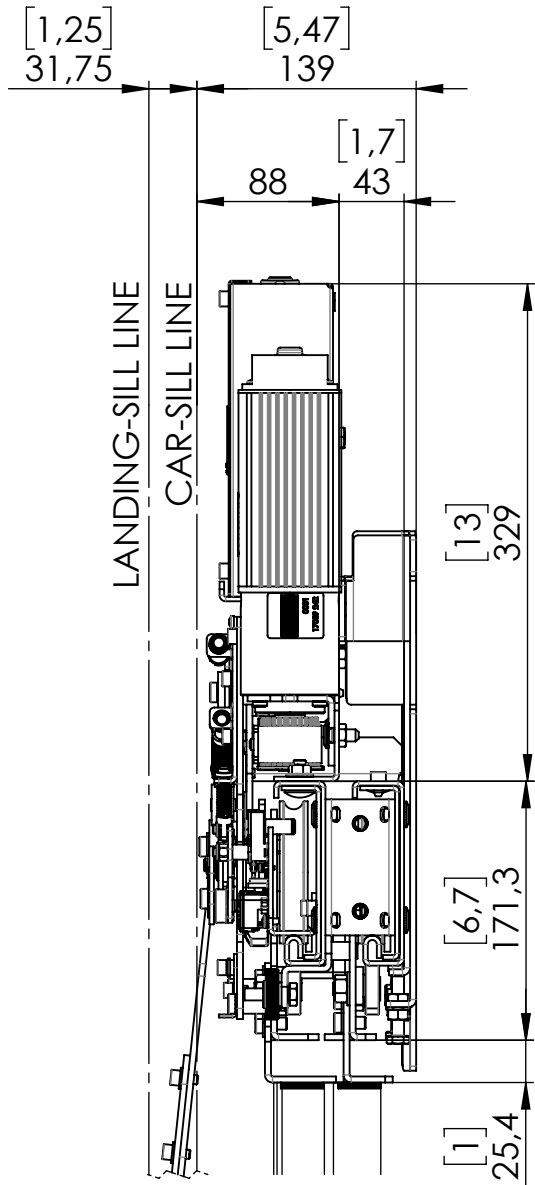
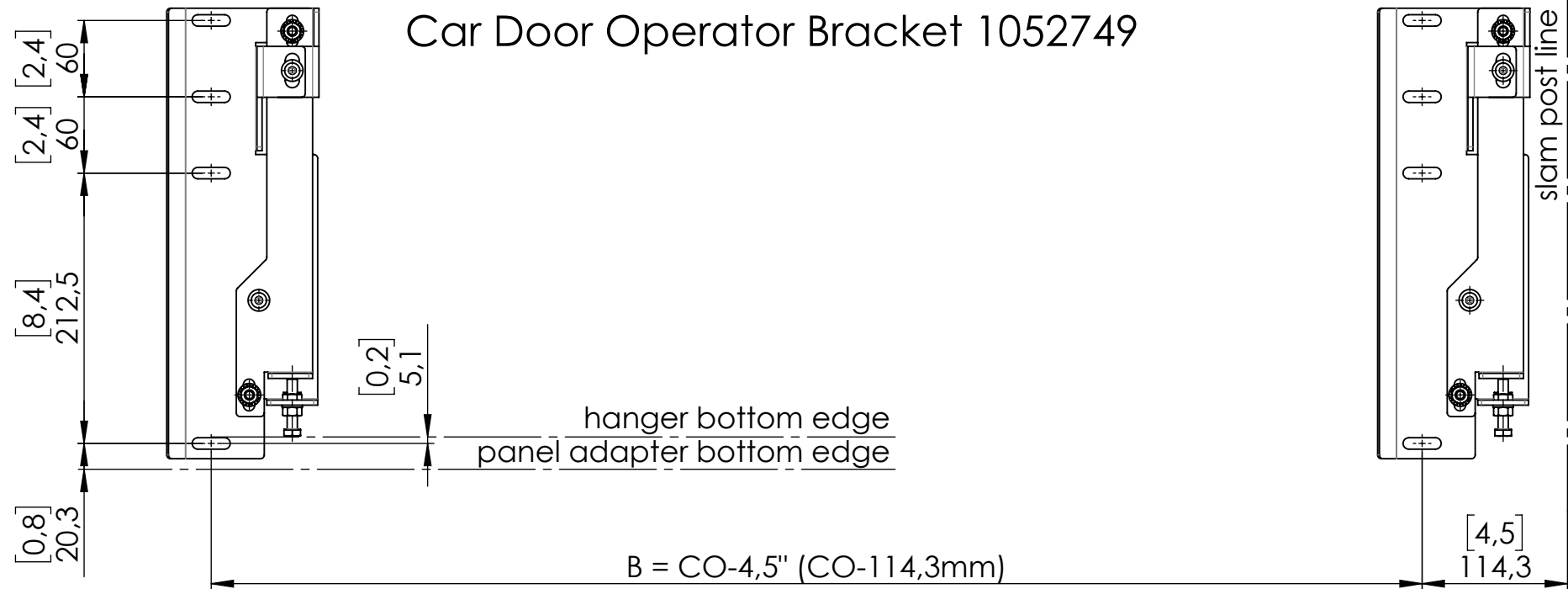


Released for Production

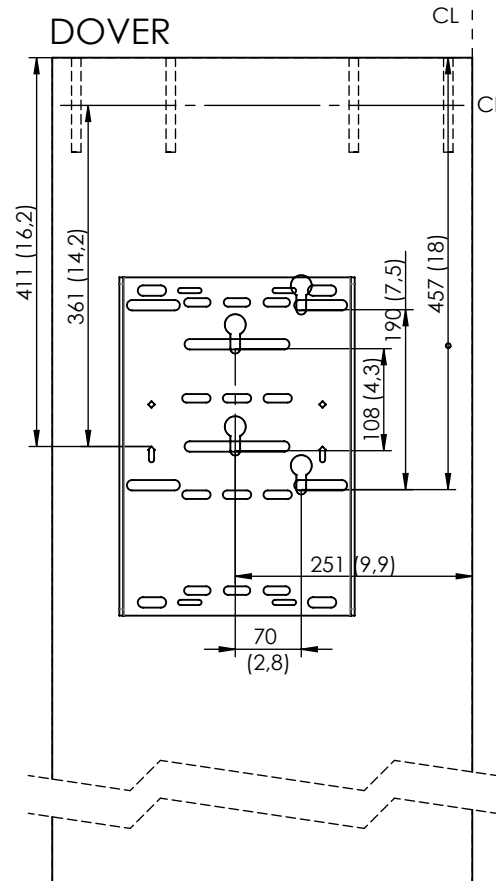
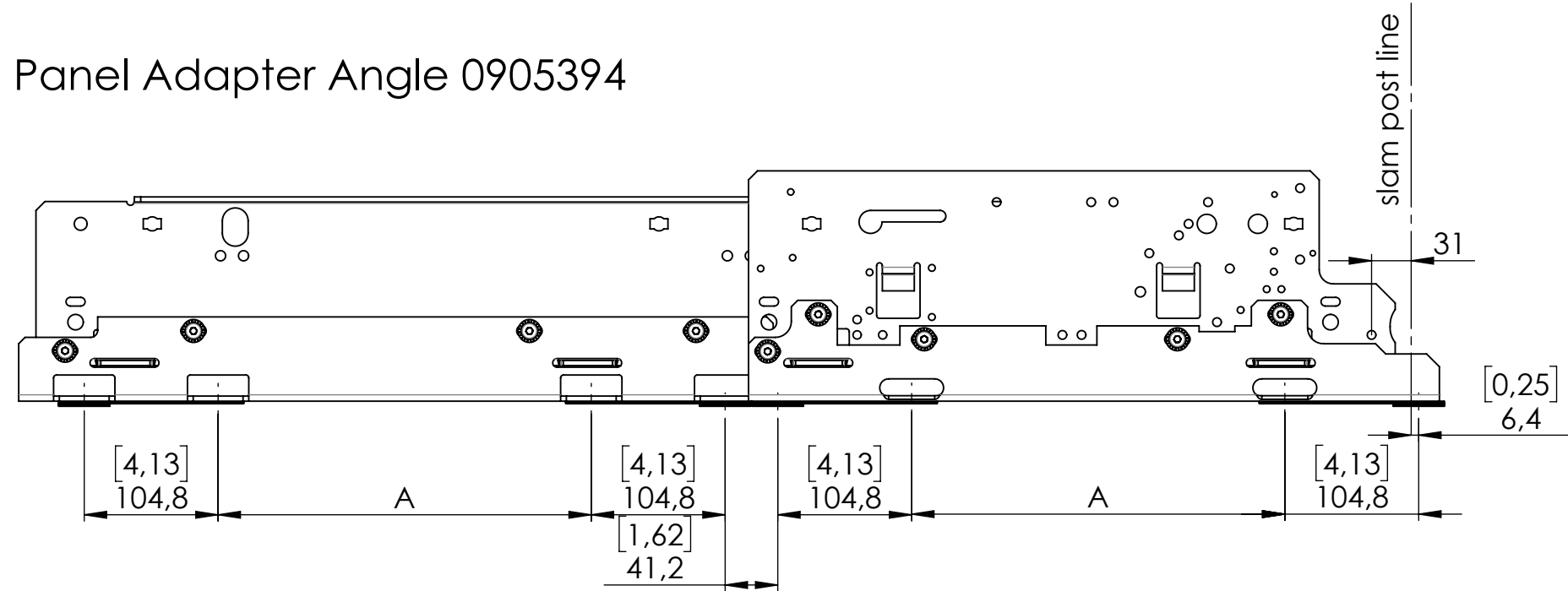
©WITTUR HOLDING GmbH



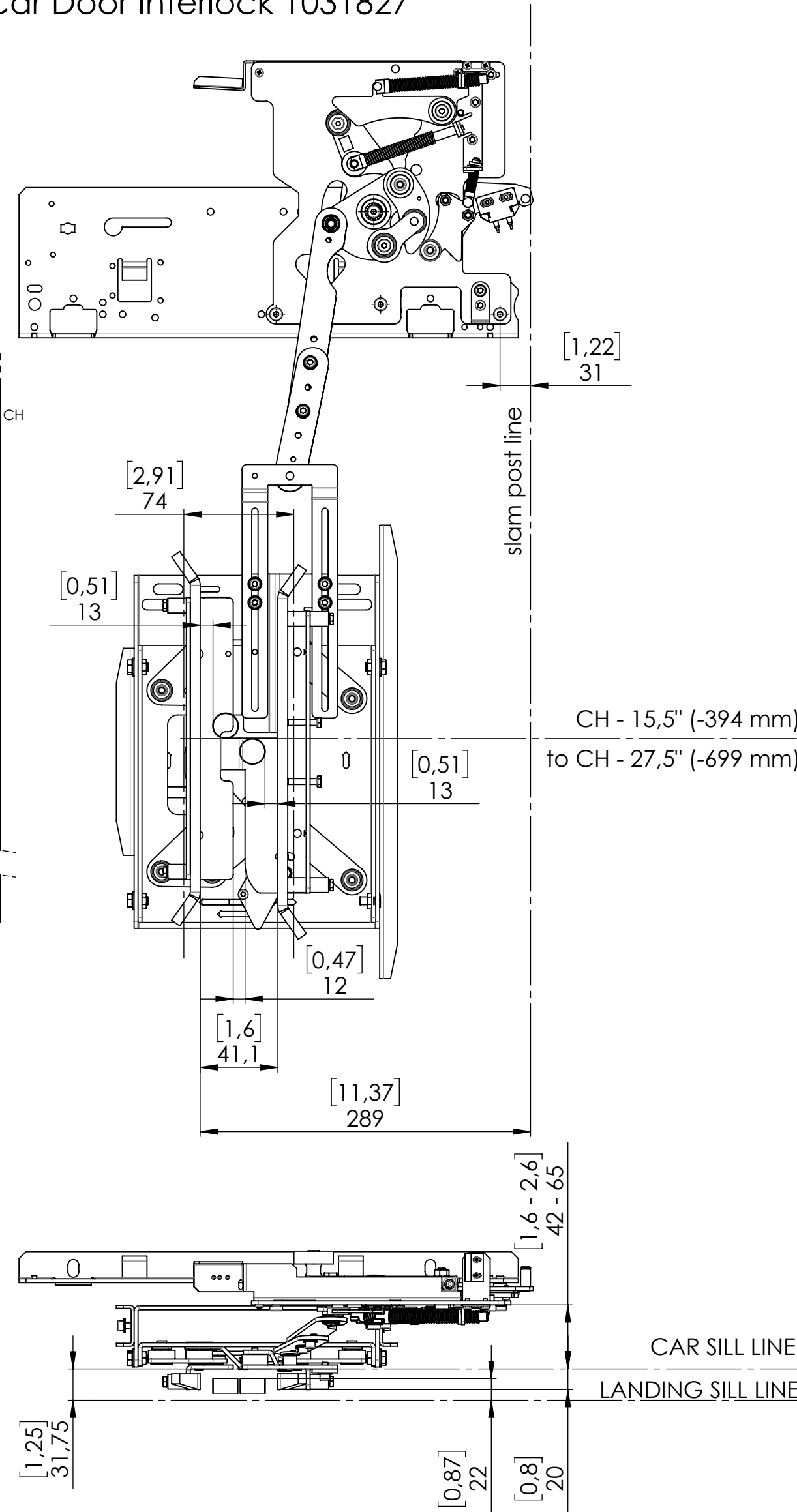
1	Car Door Operator	1048177
2	Car Door Operator Bracket	1052749
3	Panel Adapter Angle	0905394
4	Car Door Interlock	1031827



Panel Adapter Angle 0905394



Car Door Interlock 1031827



50	1270,0	15,5" (393,7)	45,5" (1155,5)
49	1244,6	15,5" (393,7)	44,5" (1130,1)
48	1219,2	14,5" (368,3)	43,5" (1104,7)
47	1193,8	14,5" (368,3)	42,5" (1079,3)
46	1168,4	13,5" (342,9)	41,5" (1053,9)
45	1143,0	13,5" (342,9)	40,5" (1028,5)
44	1117,6	12,5" (317,5)	39,5" (1003,1)
43	1092,2	12,5" (317,5)	38,5" (977,7)
42	1066,8	11,5" (292,1)	37,5" (952,3)
41	1041,4	11,5" (292,1)	36,5" (927,1)
40	1016,0	10,5" (266,7)	35,5" (901,7)
39	990,6	10,5" (266,7)	34,5" (876,3)
38	965,2	9,5" (241,3)	33,5" (850,9)
37	939,8	9,5" (241,3)	32,5" (825,5)
36	914,4	8,5" (215,9)	31,5" (799,9)
35	889,0	8,5" (215,9)	30,5" (774,7)
34	863,6	7,5" (190,5)	29,5" (749,3)
33	838,2	7,5" (190,5)	28,5" (723,9)
32	812,8	6,5" (165,1)	27,5" (698,5)
31	787,4	6,5" (165,1)	26,5" (673,1)
30	762,0	5,5" (139,7)	25,5" (647,7)

CO [in]	CO [mm]	A	B
---------	---------	---	---

72	1828,8	26,5" (673,1)	67,5" (1714,5)
71	1803,4	26,5" (673,1)	66,5" (1689,1)
70	1778,0	25,5" (647,7)	65,5" (1663,7)
69	1752,6	25,5" (647,7)	64,5" (1638,3)
68	1727,2	24,5" (622,3)	63,5" (1612,9)
67	1701,8	24,5" (622,3)	62,5" (1587,5)
66	1676,4	23,5" (596,9)	61,5" (1562,1)
65	1651,0	23,5" (596,9)	60,5" (1536,7)
64	1625,6	22,5" (571,5)	59,5" (1511,3)
63	1600,2	22,5" (571,5)	58,5" (1485,9)
62	1574,8	21,5" (546,1)	57,5" (1460,5)
61	1549,4	21,5" (546,1)	56,5" (1435,1)
60	1524,0	20,5" (520,7)	55,5" (1409,4)
59	1498,6	20,5" (520,7)	54,5" (1384,1)
58	1473,2	19,5" (495,3)	53,5" (1358,7)
57	1447,8	19,5" (495,3)	52,5" (1333,3)
56	1422,4	18,5" (469,9)	51,5" (1307,9)
55	1397,0	18,5" (469,9)	50,5" (1282,5)
54	1371,6	17,5" (444,5)	49,5" (1257,1)
53	1346,2	17,5" (444,5)	48,5" (1231,7)
52	1320,8	16,5" (419,1)	47,5" (1206,3)
51	1295,4	16,5" (419,1)	46,5" (1180,9)

CO [in]	CO [mm]	A	B [mm] COx1.5+88.9
---------	---------	---	-----------------------

GEN. TOLERANCE WST-00033 TOLERANCE GEN. WST-00033 GT2	FUNCTIONAL CLASS CLASSE FUNZIONALE B	DESCRIPTION Quick Installation Guide DOVER SGV NA - 2T Meccanismo Operatore	PRODUCT CATEGORY CATEGORIA PRODOTTO 2 - DOORS	PRODUCT CODE CODICE PRODOTTO SGV
SURFACE TEXTURE SYMBOLS SIMB. RUGOSITA' SUPERFICIALE ISO1302	GEOM. TOLERANCE SYMBOLS SIMB. TOLLERANZE GEOM. ISO1101	SCALE SCALA 1:5	SIZE FORMATO A2	DESIGNED BY DISEGNATO DA AT1OberR DRAWN BY DISEGNATO DA AT1OberR DATE DATA 04/08/2020 FIRST APPROVAL PRIMA APPROVAZIONE dollima DATE DATA 15/10/2020
SHEET FOGLIO NR 1/1		Released		