



Complete Sections 1-11 Ref. TC.2.005255 any for additional technical details

1	Contact: Name/Email/Phone:										
2	Company/Company Address:										
3	Project Reference/Address:										
4	Elevator # (s) / Side F/R:	#	F / R	#	F / R	#	F / R	#	F / R	#	F / R
circle F=Front, R=Rear											
5a	Door Operator Quantity:										
5b	Landing Track Quantity:										

Order Configurations	Config. #1	Config. #2	Config. #3	Config. #4	Config. #5	Config. #6
----------------------	------------	------------	------------	------------	------------	------------

6	Door Type/Clutch Location:						
	1 Panel Side Opening (1SSS)	2 Panel Center Opening (1SCO)	2 Panel Telescopic Opening (2SSS)	4 Panel Center Opening (2SCO)			
	 1S-L	 2C-L	 2T-L	 4C-L			
	 1S-R	 2C-R	 2T-R	 4C-R			
		 2C-D		 4C-D			

7	Clear Opening (CO) Width:					
	Clear Height (CH):					

CH required if new car door panels are required

8	Clutch Interface:	GAL/ECI	GAL/ECI	GAL/ECI	GAL/ECI	GAL/ECI	GAL/ECI
	Select final interface.	MAC	MAC	MAC	MAC	MAC	MAC
		DOVER	DOVER	DOVER	DOVER	DOVER	DOVER
		WH E5A	WH E5A	WH E5A	WH E5A	WH E5A	WH E5A
		OTIS 6940	OTIS 6940	OTIS 6940	OTIS 6940	OTIS 6940	OTIS 6940
		AMD	AMD	AMD	AMD	AMD	AMD
		OTHER	OTHER	OTHER	OTHER	OTHER	OTHER

circle selection

For OTHER complete Survey for Lock Roller Position and provide photo - custom quote required

8a	If Otis - Total Landing Dr Qty:					
----	---------------------------------	--	--	--	--	--

9	Operator Mounting:					
---	--------------------	--	--	--	--	--

(default) V2-01, Standard mounting brackets  
0 No mounting brackets

10a	Cab Door Panel:					
-----	-----------------	--	--	--	--	--

Advise Thickness/Finish (write thickness/shorthand for finish, ex: 1.25-C for 1.25" with #4 Stainless Steel cladding)

- |      |                 |            |  |
|------|-----------------|------------|--|
| 0    | Retain existing | A          | New Double skin, powder coat - prime ( )                 |
| 1    | 1.00" Thick     | B (+ RAL#) | New Double skin, powder coat - standard Wittur color ( ) |
| 1.25 | 1.25" Thick     | C          | New Double skin, Stainless Steel #4 Clad                 |
|      |                 | D          | New Double skin, Stainless Steel #8 Clad                 |
|      |                 | E          | New Double skin, Bronze #4 Clad                          |
|      |                 | F          | New Double skin, Bronze #8 Clad                          |

10b	Cab Door Panel Interface:	AMD	AMD	AMD	AMD	AMD	AMD
	(Standard pendent bolt interface)	MAC	MAC	MAC	MAC	MAC	MAC
		DOVER	DOVER	DOVER	DOVER	DOVER	DOVER
		GAL	GAL	GAL	GAL	GAL	GAL
		ARMOR	ARMOR	ARMOR	ARMOR	ARMOR	ARMOR
		OTHER	OTHER	OTHER	OTHER	OTHER	OTHER

circle selection

For OTHER complete Survey for Operator & Pendent Bolt Position and provide photo - custom quote required

10c Landing Door Panel:

--	--	--	--	--	--

Advise **Thickness/Finish** (write thickness/shorthand for finish, ex: 1.25-C for 1.25" with #4 Stainless Steel cladding)

- |             |                 |                   |   |
|-------------|-----------------|-------------------|---|
| <b>0</b>    | Retain existing | <b>A</b>          | New Double skin, powder coat - prime ()                 |
| <b>1</b>    | 1.00" Thick     | <b>B (+ RAL#)</b> | New Double skin, powder coat - standard Wittur color () |
| <b>1.25</b> | 1.25" Thick     | <b>C</b>          | New Double skin, Stainless Steel #4 Clad                |
|             |                 | <b>D</b>          | New Double skin, Stainless Steel #8 Clad                |
|             |                 | <b>E</b>          | New Double skin, Bronze #4 Clad                         |
|             |                 | <b>F</b>          | New Double skin, Bronze #8 Clad                         |

10d Landing Door Panel Interface:  
(Standard pendent bolt interface)

circle selection

AMD	AMD	AMD	AMD	AMD	AMD
MAC	MAC	MAC	MAC	MAC	MAC
DOVER	DOVER	DOVER	DOVER	DOVER	DOVER
GAL	GAL	GAL	GAL	GAL	GAL
ARMOR	ARMOR	ARMOR	ARMOR	ARMOR	ARMOR
OTHER	OTHER	OTHER	OTHER	OTHER	OTHER

For **OTHER** complete Survey for Operator & Pendent Bolt Position and provide photo - **custom quote required**

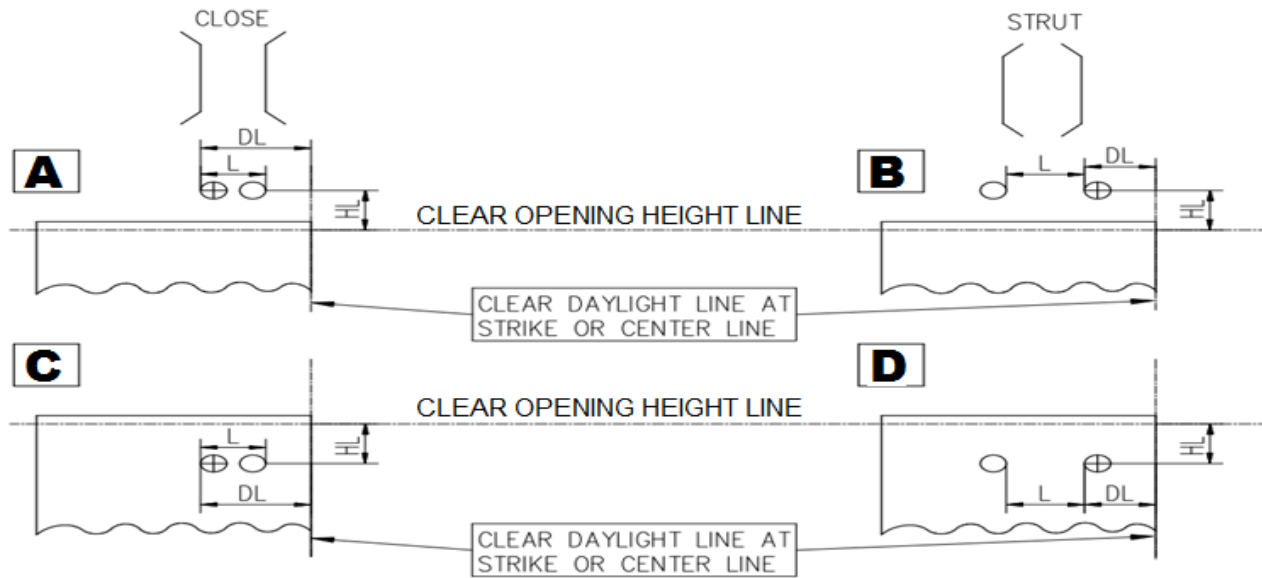
11 Programming Tool Qty:

not required for commissioning; this is a maintenace/fine tuning tool

12 Notes:

# LOCK ROLLER POSITION SURVEY

Complete Survey for Lock Roller Position and provide photo for custom clutch quote



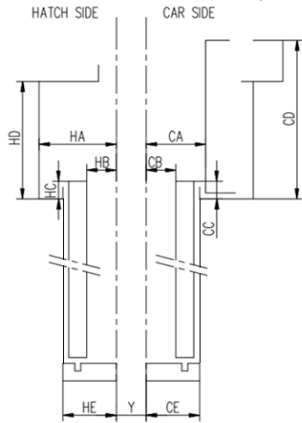
- ⊕ FIXED ROLLER
- MOVEABLE ROLLER

**A** BOX INDICATING ARRANGEMENT

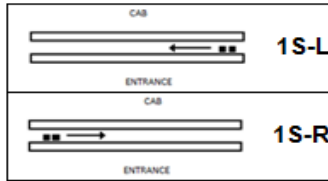
Order Configurations	Config. #1	Config. #2	Config. #3	Config. #4	Config. #5	Config. #6
ARRANGEMENT -						
HEIGHT OF LOCK ROLLERS - HL=						
DISTANCE OF LOCK ROLLERS - DL=						
ROLLERS, LOCKED - L=						
ROLLERS, UNLOCKED - L=						

# OPERATOR AND PENDENT BOLT SURVEY - SINGLE SPEED DOOR

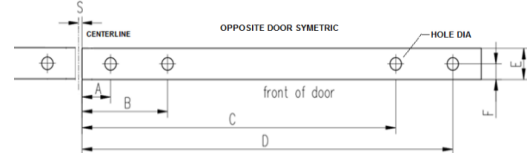
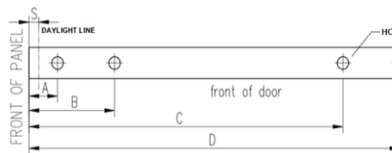
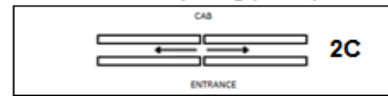
Complete Survey for Operator & Pendent Bolt Position and provide photo for custom quote



1 Panel Side Opening (1SSS)



2 Panel Center Opening (1SCO)



CAR

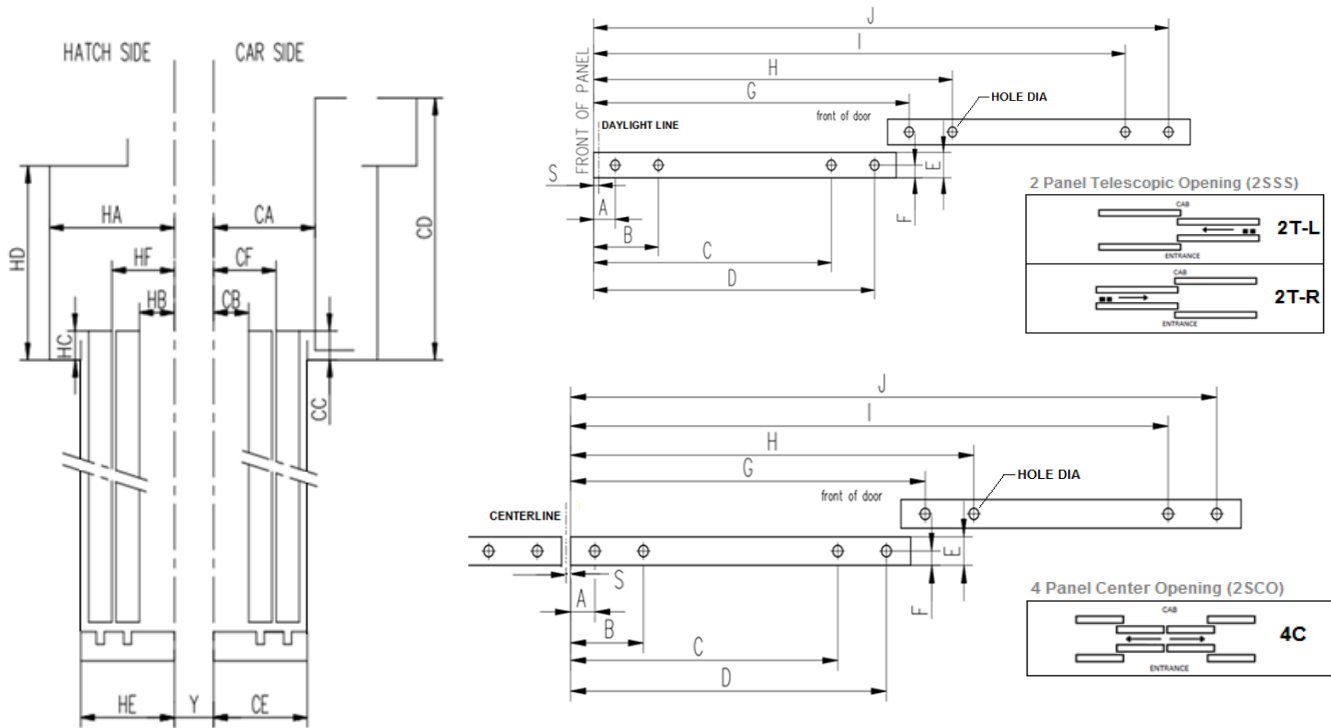
	Config. #1	Config. #2	Config. #3	Config. #4	Config. #5	Config. #6
4.06" min CA=						
1.65" min CB=						
CC=						
CD=						
CE=						
Y=						
A=						
B=						
C=						
D=						
E=						
F=						
S=						
HOLE DIA=						

HALL

3.56" min HA=						
1.75" min HB=						
HC=						
HD=						
HE=						
A=						
B=						
C=						
D=						
E=						
F=						
S=						
HOLE DIA=						

# OPERATOR AND PENDENT BOLT SURVEY - TWO SPEED DOOR

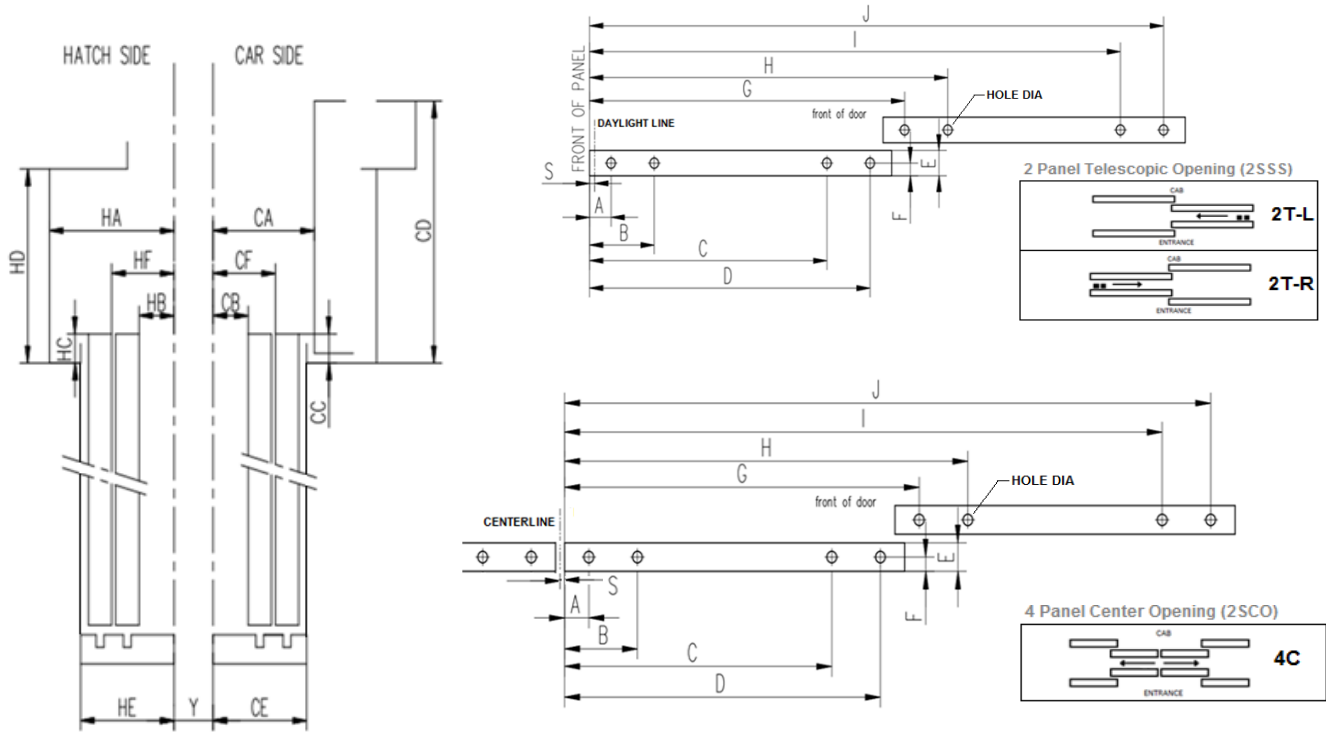
Complete Survey for Operator & Pendent Bolt Position and provide photo for custom quote



Order Configurations	Config. #1	Config. #2	Config. #3	Config. #4	Config. #5	Config. #6
<b>CAR</b>	5.55" min CA=					
	1.65" min CB=					
	CC=					
	CD=					
	CE=					
	CF=					
	Y=					
	A=					
	B=					
	C=					
	D=					
	E=					
	F=					
	G=					
	H=					
	I=					
	J=					
	S=					
	HOLE DIA=					

# OPERATOR AND PENDENT BOLT SURVEY -TWO SPEED DOOR

Complete Survey for Operator & Pendent Bolt Position and provide photo for custom quote



Order Configurations	Config. #1	Config. #2	Config. #3	Config. #4	Config. #5	Config. #6
HALL	5.00" min HA=					
	1.75" min HB=					
	HC=					
	HD=					
	HE=					
	HF=					
	A=					
	B=					
	C=					
	D=					
	E=					
	F=					
	G=					
	H=					
	I=					
	J=					
	S=					
	HOLE DIA=					